

# IHC*easy* NCKAP1L Ready-To-Use IHC Kit

Catalog Number: **KHC1140**

## General Information

**Sample type:**  
FFPE tissue

**Cited sample type:**

**Reactivity:**  
Human, Mouse, Rat

**Cited Reactivity:**

**Assay type:**  
Immunohistochemistry

**Primary antibody type:**  
Rabbit Polyclonal

**Secondary antibody type:**  
Polymer-HRP-Goat anti-Rabbit

## Kit Component

Component	Size	Concentration
Antigen Retrieval Buffer	100 mL	50×
Washing Buffer	100 mL ×2	20×
Blocking Buffer	5 mL	RTU
Primary Antibody	5 mL	RTU
Secondary Antibody	5 mL	RTU
Chromogen Component A	0.2 mL	RTU
Chromogen Component B	4 mL	RTU
Signal Enhancer	5 mL	RTU
Counter Staining Reagent	5 mL	RTU
Mounting Media	5 mL	RTU
Control Slide	1 slide (Optional)	FFPE
Datasheet	1 Copy	
Manual	1 Copy	

## Storage Instructions

All the reagents are stored at 2-8°C. The kit is stable for 6 months from the date of receipt.

## Background

Membrane-associated protein HEM1 encoded by human NCKAP1L (Nck-associated protein 1-like) gene belongs to the HEM family of tissue-specific transmembrane proteins which are highly conserved from invertebrates through mammals. HEM1 is characterized as hematopoietic cell-specific actin regulatory protein. HEM1 is a component of the "WAVE" complex, which signals downstream of activated Rac to stimulate F-actin polymerization in response to immuno-receptor signaling. Therefore, HEM1 may be essential for most active processes dependent on reorganization of the actin cytoskeleton in immune cells.

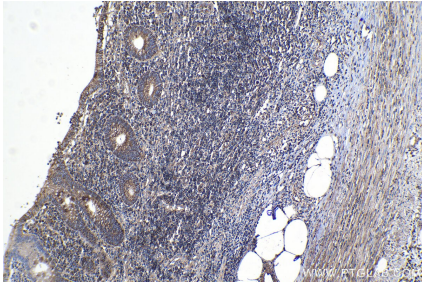
## Synonyms

HEM1, HEM1; NCKAP1L, Hematopoietic protein 1, NCK associated protein 1 like, NCKAP1L

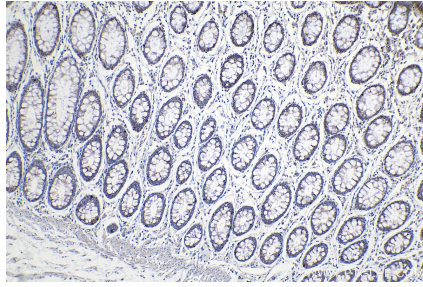
For technical support and original validation data for this product please contact:  
T: 1 (888) 4PTGLAB (1-888-478-4522) (toll free in USA), or 1(312) 455-8498 (outside USA)  
E: [proteintech@ptglab.com](mailto:proteintech@ptglab.com)  
W: [ptglab.com](http://ptglab.com)

This product is exclusively available under Proteintech Group brand and is not available to purchase from any other manufacturer.

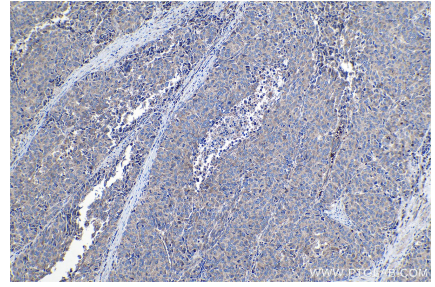
## Selected Validation Data



Immunohistochemical analysis of paraffin-embedded human appendicitis tissue slide using KHC1140 (NCKAP1L IHC Kit).



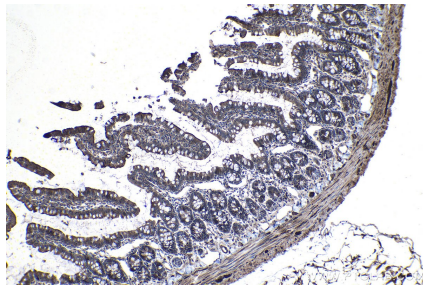
Immunohistochemical analysis of paraffin-embedded human colon tissue slide using KHC1140 (NCKAP1L IHC Kit).



Immunohistochemical analysis of paraffin-embedded human stomach cancer tissue slide using KHC1140 (NCKAP1L IHC Kit).



Immunohistochemical analysis of paraffin-embedded mouse small intestine tissue slide using KHC1140 (NCKAP1L IHC Kit).



Immunohistochemical analysis of paraffin-embedded rat small intestine tissue slide using KHC1140 (NCKAP1L IHC Kit).