

IHC*easy* RPLP0 Ready-To-Use IHC Kit

Catalog Number: **KHC1145**

General Information

Sample type:
FFPE tissue

Cited sample type:

Reactivity:
Human, Mouse, Rat

Cited Reactivity:

Assay type:
Immunohistochemistry

Primary antibody type:
Rabbit Polyclonal

Secondary antibody type:
Polymer-HRP-Goat anti-Rabbit

Kit Component

Component	Size	Concentration
Antigen Retrieval Buffer	100 mL	50×
Washing Buffer	100 mL ×2	20×
Blocking Buffer	5 mL	RTU
Primary Antibody	5 mL	RTU
Secondary Antibody	5 mL	RTU
Chromogen Component A	0.2 mL	RTU
Chromogen Component B	4 mL	RTU
Signal Enhancer	5 mL	RTU
Counter Staining Reagent	5 mL	RTU
Mounting Media	5 mL	RTU
Control Slide	1 slide (Optional)	FFPE
Datasheet	1 Copy	
Manual	1 Copy	

Storage Instructions

All the reagents are stored at 2-8°C. The kit is stable for 6 months from the date of receipt.

Background

RPLP0 is first identified as a cytosolic protein which takes a part in the ribosomal stalk and interacts with RPLP1 and RPLP2. It also has potential roles in molecular transport from outside into the cells. It generally presents in multiple copies on the ribosome and have isoelectric points in the range of pH 3 to 5, in contrast to most ribosomal proteins, which are single copy and basic.

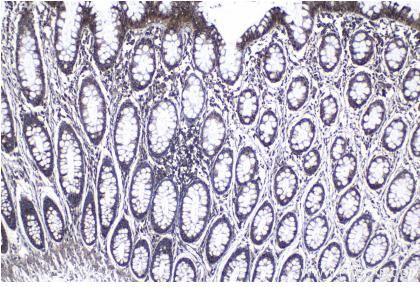
Synonyms

60S ribosomal protein L10E, L10E, P0, PRLP0, ribosomal protein, large, P0, RPLP0, RPP0

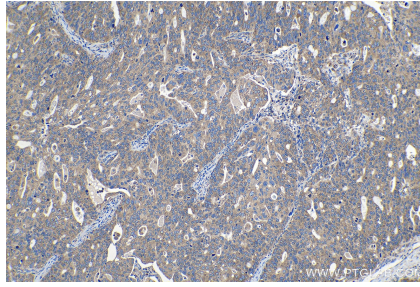
For technical support and original validation data for this product please contact:
T: 1 (888) 4PTGLAB (1-888-478-4522) (toll free in USA), or 1(312) 455-8498 (outside USA)
E: proteintech@ptglab.com
W: ptglab.com

This product is exclusively available under Proteintech Group brand and is not available to purchase from any other manufacturer.

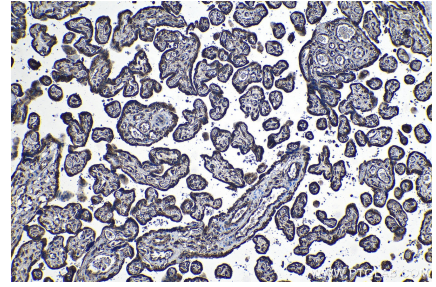
Selected Validation Data



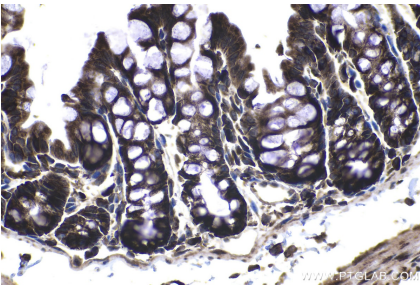
Immunohistochemical analysis of paraffin-embedded human colon tissue slide using KHC1145 (RPLPO IHC Kit).



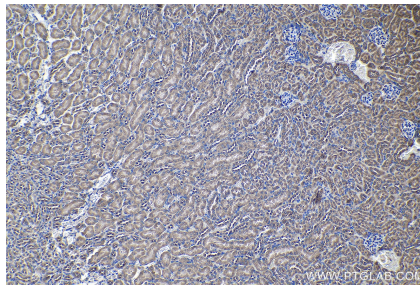
Immunohistochemical analysis of paraffin-embedded human ovary tumor tissue slide using KHC1145 (RPLPO IHC Kit).



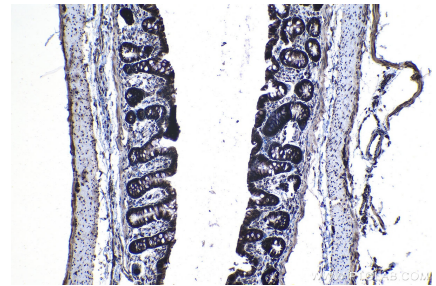
Immunohistochemical analysis of paraffin-embedded human placenta tissue slide using KHC1145 (RPLPO IHC Kit).



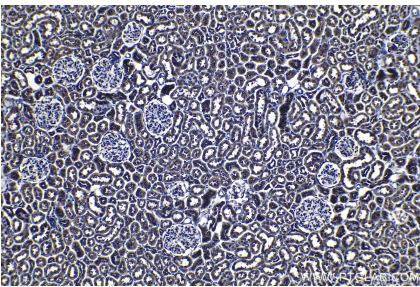
Immunohistochemical analysis of paraffin-embedded mouse colon tissue slide using KHC1145 (RPLPO IHC Kit).



Immunohistochemical analysis of paraffin-embedded mouse kidney tissue slide using KHC1145 (RPLPO IHC Kit).



Immunohistochemical analysis of paraffin-embedded rat colon tissue slide using KHC1145 (RPLPO IHC Kit).



Immunohistochemical analysis of paraffin-embedded rat kidney tissue slide using KHC1145 (RPLPO IHC Kit).