

# IHC*easy* PPAN Ready-To-Use IHC Kit

Catalog Number: **KHC1193**

## General Information

Sample type:  
FFPE tissue  
Cited sample type:  
Reactivity:  
Human  
Cited Reactivity:

Assay type:  
Immunohistochemistry  
Primary antibody type:  
Rabbit Polyclonal  
Secondary antibody type:  
Polymer-HRP-Goat anti-Rabbit

## Kit Component

Component	Size	Concentration
Antigen Retrieval Buffer	100 mL	50×
Washing Buffer	100 mL ×2	20×
Blocking Buffer	5 mL	RTU
Primary Antibody	5 mL	RTU
Secondary Antibody	5 mL	RTU
Chromogen Component A	0.2 mL	RTU
Chromogen Component B	4 mL	RTU
Signal Enhancer	5 mL	RTU
Counter Staining Reagent	5 mL	RTU
Mounting Media	5 mL	RTU
Control Slide	1 slide (Optional)	FFPE
Datasheet	1 Copy	
Manual	1 Copy	

## Storage Instructions

All the reagents are stored at 2-8°C. The kit is stable for 6 months from the date of receipt.

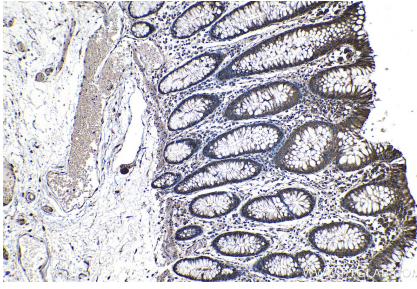
## Background

PPAN (or SSF, SSF1 or SSF2) gene is widely expressed, and encodes peter pan homolog protein which may be localized in nucleus. Two isoforms are produced through alternative splicing. So far the characterization of this protein is largely unknown, multiple phosphorylation sites has been revealed based on high-throughput phosphorylation analysis.

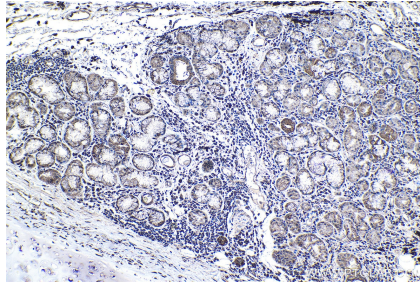
## Synonyms

BXDC3, Peter Pan homolog, peter pan homolog (Drosophila), PPAN, SSF, Ssf 1, SSF1, SSF2, Suppressor of SWI4 1 homolog

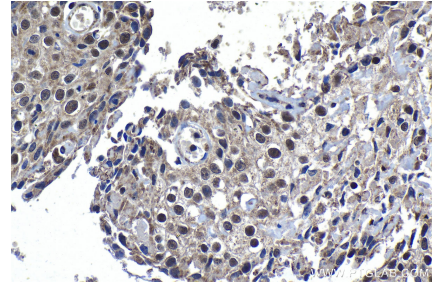
## Selected Validation Data



Immunohistochemical analysis of paraffin-embedded human colon tissue slide using KHC1193 (PPAN IHC Kit).



Immunohistochemical analysis of paraffin-embedded human lung cancer tissue slide using KHC1193 (PPAN IHC Kit).



Immunohistochemical analysis of paraffin-embedded human cervical cancer tissue slide using KHC1193 (PPAN IHC Kit).