

# IHC*easy* KIF18A Ready-To-Use IHC Kit

Catalog Number: **KHC1223**

## General Information

**Sample type:**  
FFPE tissue

**Cited sample type:**

**Reactivity:**  
Human, Mouse, Rat

**Cited Reactivity:**

**Assay type:**  
Immunohistochemistry

**Primary antibody type:**  
Rabbit Polyclonal

**Secondary antibody type:**  
Polymer-HRP-Goat anti-Rabbit

## Kit Component

| Component                | Size               | Concentration |
|--------------------------|--------------------|---------------|
| Antigen Retrieval Buffer | 100 mL             | 50×           |
| Washing Buffer           | 100 mL ×2          | 20×           |
| Blocking Buffer          | 5 mL               | RTU           |
| Primary Antibody         | 5 mL               | RTU           |
| Secondary Antibody       | 5 mL               | RTU           |
| Chromogen Component A    | 0.2 mL             | RTU           |
| Chromogen Component B    | 4 mL               | RTU           |
| Signal Enhancer          | 5 mL               | RTU           |
| Counter Staining Reagent | 5 mL               | RTU           |
| Mounting Media           | 5 mL               | RTU           |
| Control Slide            | 1 slide (Optional) | FFPE          |
| Datasheet                | 1 Copy             |               |
| Manual                   | 1 Copy             |               |

## Storage Instructions

All the reagents are stored at 2-8°C. The kit is stable for 6 months from the date of receipt.

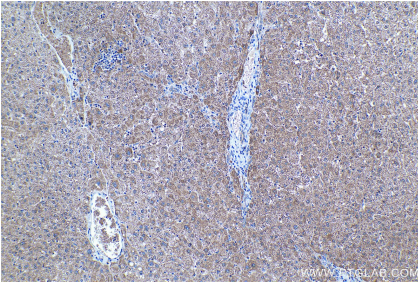
## Background

KIF18A belongs to the Kinesin family. KIF18A binds to microtubules and moves along them using energy from ATP hydrolysis. KIF18A is related to the localization of membrane organelles and protein complexes, as well as the maintenance of microtubule dynamics and mitosis. KIF18A expression is low in normal tissues and high in solid tumors, including breast cancer, hepatocellular carcinoma and lung adenocarcinoma, colorectal cancer, renal cell carcinoma, and head and neck squamous cell carcinoma.

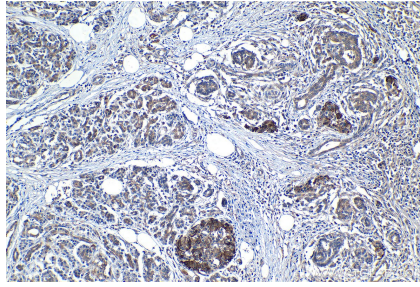
## Synonyms

KIF18A, kinesin family member 18A, Kinesin like protein KIF18A, Marrow stromal KIF18A, MS KIF18A

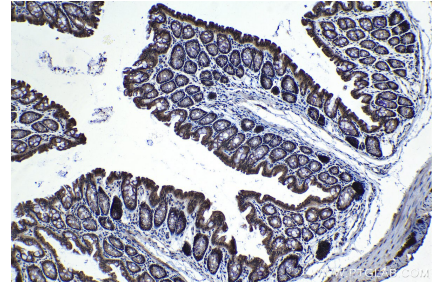
## Selected Validation Data



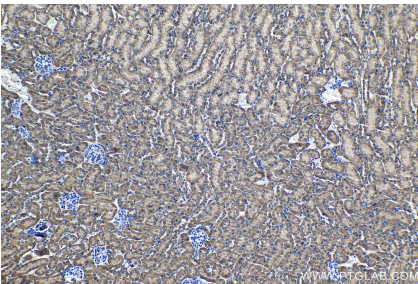
Immunohistochemical analysis of paraffin-embedded human liver tissue slide using KHC1223 (KIF18A IHC Kit).



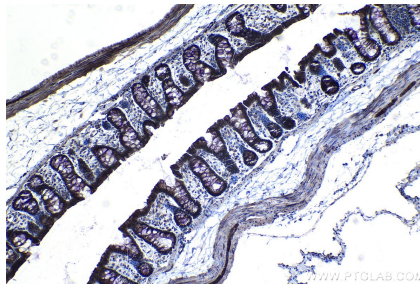
Immunohistochemical analysis of paraffin-embedded human pancreas cancer tissue slide using KHC1223 (KIF18A IHC Kit).



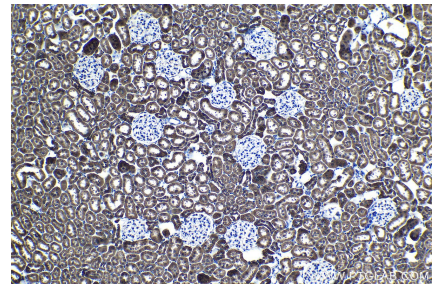
Immunohistochemical analysis of paraffin-embedded mouse colon tissue slide using KHC1223 (KIF18A IHC Kit).



Immunohistochemical analysis of paraffin-embedded mouse kidney tissue slide using KHC1223 (KIF18A IHC Kit).



Immunohistochemical analysis of paraffin-embedded rat colon tissue slide using KHC1223 (KIF18A IHC Kit).



Immunohistochemical analysis of paraffin-embedded rat kidney tissue slide using KHC1223 (KIF18A IHC Kit).