

IHC*easy* KPNA3 Ready-To-Use IHC Kit

Catalog Number: **KHC1242**

General Information

Sample type:
FFPE tissue

Cited sample type:

Reactivity:
Human, Mouse, Rat

Cited Reactivity:

Assay type:
Immunohistochemistry

Primary antibody type:
Mouse Monoclonal

Secondary antibody type:
Polymer-HRP-Goat anti-Mouse

Kit Component

Component	Size	Concentration
Antigen Retrieval Buffer	100 mL	50×
Washing Buffer	100 mL ×2	20×
Blocking Buffer	5 mL	RTU
Primary Antibody	5 mL	RTU
Secondary Antibody	5 mL	RTU
Chromogen Component A	0.2 mL	RTU
Chromogen Component B	4 mL	RTU
Signal Enhancer	5 mL	RTU
Counter Staining Reagent	5 mL	RTU
Mounting Media	5 mL	RTU
Control Slide	1 slide (Optional)	FFPE
Datasheet	1 Copy	
Manual	1 Copy	

Storage Instructions

All the reagents are stored at 2-8°C. The kit is stable for 6 months from the date of receipt.

Background

karyopherin subunit alpha 3 (KPNA3) is a member of the importin alpha family which can transport molecules between the nucleus and cytoplasm. It is ubiquitous expressed in brain, testis and esophagus. KPNA3 is associated with many severe diseases such as hepatocellular Carcinoma, schizophrenia, major depression and opiate dependence.

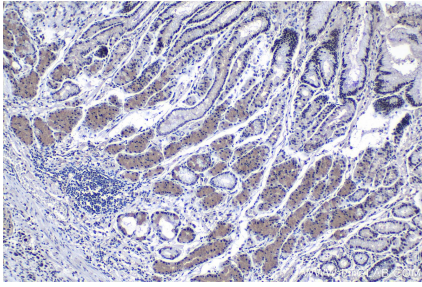
Synonyms

hSRP1, Importin alpha Q2, Importin subunit alpha 3, IPOA4, Karyopherin subunit alpha 3, KPNA3, Qip2, SRP1, SRP1 gamma, SRP1gamma, SRP4

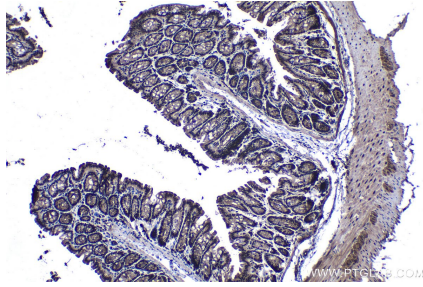
For technical support and original validation data for this product please contact:
T: 1 (888) 4PTGLAB (1-888-478-4522) (toll free in USA), or 1(312) 455-8498 (outside USA)
E: proteintech@ptglab.com
W: ptglab.com

This product is exclusively available under Proteintech Group brand and is not available to purchase from any other manufacturer.

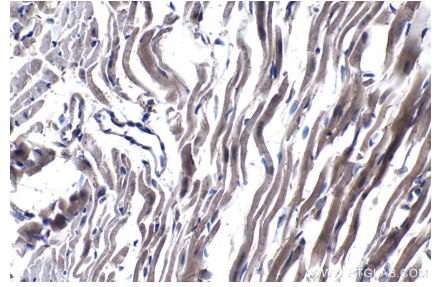
Selected Validation Data



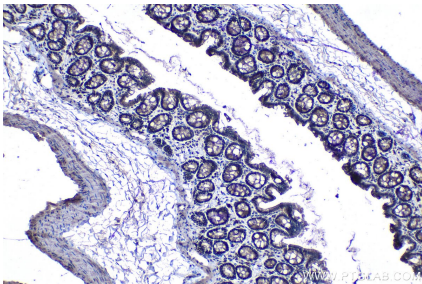
Immunohistochemical analysis of paraffin-embedded human stomach cancer tissue slide using KHC1242 (KPNA3 IHC Kit).



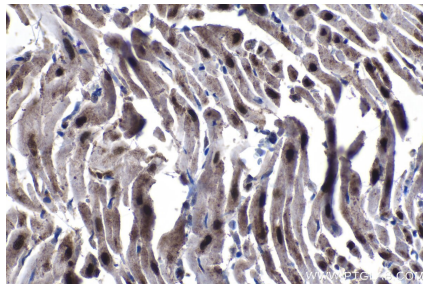
Immunohistochemical analysis of paraffin-embedded mouse colon tissue slide using KHC1242 (KPNA3 IHC Kit).



Immunohistochemical analysis of paraffin-embedded mouse heart tissue slide using KHC1242 (KPNA3 IHC Kit).



Immunohistochemical analysis of paraffin-embedded rat colon tissue slide using KHC1242 (KPNA3 IHC Kit).



Immunohistochemical analysis of paraffin-embedded rat heart tissue slide using KHC1242 (KPNA3 IHC Kit).