

# IHC*easy* KIF22 Ready-To-Use IHC Kit

Catalog Number: **KHC1255**

## General Information

**Sample type:**  
FFPE tissue

**Cited sample type:**

**Reactivity:**  
Human, Mouse

**Cited Reactivity:**

**Assay type:**  
Immunohistochemistry

**Primary antibody type:**  
Rabbit Polyclonal

**Secondary antibody type:**  
Polymer-HRP-Goat anti-Rabbit

## Kit Component

Component	Size	Concentration
Antigen Retrieval Buffer	100 mL	50×
Washing Buffer	100 mL ×2	20×
Blocking Buffer	5 mL	RTU
Primary Antibody	5 mL	RTU
Secondary Antibody	5 mL	RTU
Chromogen Component A	0.2 mL	RTU
Chromogen Component B	4 mL	RTU
Signal Enhancer	5 mL	RTU
Counter Staining Reagent	5 mL	RTU
Mounting Media	5 mL	RTU
Control Slide	1 slide (Optional)	FFPE
Datasheet	1 Copy	
Manual	1 Copy	

## Storage Instructions

All the reagents are stored at 2-8°C. The kit is stable for 6 months from the date of receipt.

## Background

KIF22, also known as KID (kinesin-like DNA-binding protein), is a kinesin-like DNA-binding protein known to be involved in chromosome movement during mitosis. KIF22 is a nuclear protein regulated by SIAH-1, whose level fluctuate in a cell cycle-dependent manner, increasing during pre-mitotic phases and greatly decreasing during mitosis. KIF22 localizes to the nucleus of the interphase cells upon entry into mitosis and displays some punctate cytoplasmic staining. Defects in KIF22 are the cause of spondyloepimetaphyseal dysplasia with joint laxity, type 2 (SEMDJL2).

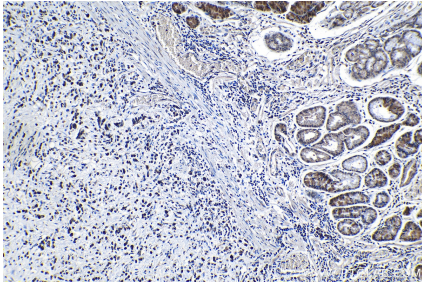
## Synonyms

KID, KIF22, kinesin family member 22, Kinesin like protein 4, Kinesin like protein KIF22, KNSL4, OBP, OBP 1, OBP 2

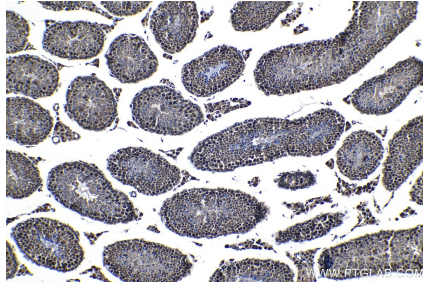
For technical support and original validation data for this product please contact:  
T: 1 (888) 4PTGLAB (1-888-478-4522) (toll free in USA), or 1(312) 455-8498 (outside USA)  
E: [proteintech@ptglab.com](mailto:proteintech@ptglab.com)  
W: [ptglab.com](http://ptglab.com)

This product is exclusively available under Proteintech Group brand and is not available to purchase from any other manufacturer.

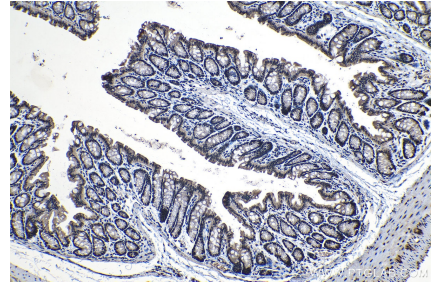
## Selected Validation Data



Immunohistochemical analysis of paraffin-embedded human stomach cancer tissue slide using KHC1255 (KIF22 IHC Kit).



Immunohistochemical analysis of paraffin-embedded mouse testis tissue slide using KHC1255 (KIF22 IHC Kit).



Immunohistochemical analysis of paraffin-embedded mouse colon tissue slide using KHC1255 (KIF22 IHC Kit).