

IHC*easy* ISCU Ready-To-Use IHC Kit

Catalog Number: **KHC1259**

General Information

Sample type:
FFPE tissue

Cited sample type:

Reactivity:
Human, Mouse, Rat

Cited Reactivity:

Assay type:
Immunohistochemistry

Primary antibody type:
Rabbit Polyclonal

Secondary antibody type:
Polymer-HRP-Goat anti-Rabbit

Kit Component

Component	Size	Concentration
Antigen Retrieval Buffer	100 mL	50×
Washing Buffer	100 mL × 2	20×
Blocking Buffer	5 mL	RTU
Primary Antibody	5 mL	RTU
Secondary Antibody	5 mL	RTU
Chromogen Component A	0.2 mL	RTU
Chromogen Component B	4 mL	RTU
Signal Enhancer	5 mL	RTU
Counter Staining Reagent	5 mL	RTU
Mounting Media	5 mL	RTU
Control Slide	1 slide (Optional)	FFPE
Datasheet	1 Copy	
Manual	1 Copy	

Storage Instructions

All the reagents are stored at 2-8°C. The kit is stable for 6 months from the date of receipt.

Background

Iron-sulfur (Fe-S) clusters are required for the functions of mitochondrial aconitase, mammalian iron regulatory protein 1, and many other proteins in multiple subcellular compartments. Mitochondrial and cytosolic isoforms of the human Fe-S cluster scaffold protein, iron-sulfur cluster assembly enzyme (ISCU), is involved in activation of iron uptake, redistribution of intracellular iron, and decreased utilization of iron in Fe-S proteins. Defects in ISCU gene are the cause of myopathy with exercise intolerance Swedish type (MEIS), which is characterized by lifelong severe exercise intolerance. Two ISCU isoforms ISCU1 (cytosolic) and ISCU2 (mitochondrial), were produced by alternative splicing, and ISCU2 is considered the canonical isoform 1. ISCU2 protein is rapidly processed upon maturation.

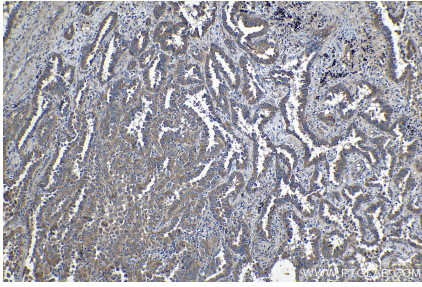
Synonyms

2310020H20Rik, HML, hnifU, ISCU, ISCU2, ISU2, NIFU, NifU like protein, NIFUN

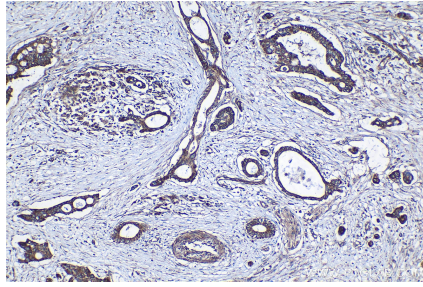
For technical support and original validation data for this product please contact:
T: 1 (888) 4PTGLAB (1-888-478-4522) (toll free in USA), or 1(312) 455-8498 (outside USA)
E: proteintech@ptglab.com
W: ptglab.com

This product is exclusively available under Proteintech Group brand and is not available to purchase from any other manufacturer.

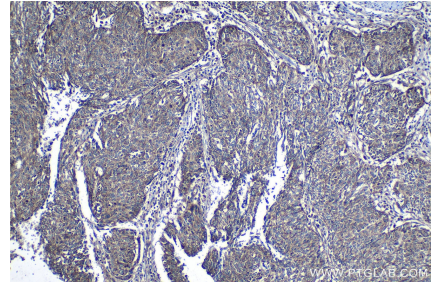
Selected Validation Data



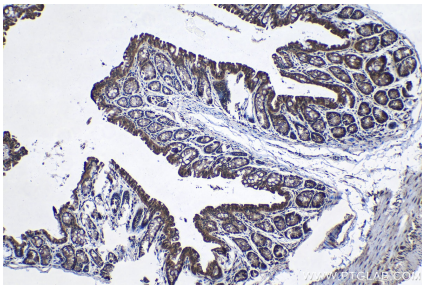
Immunohistochemical analysis of paraffin-embedded human lung cancer tissue slide using KHC1259 (ISCU IHC Kit).



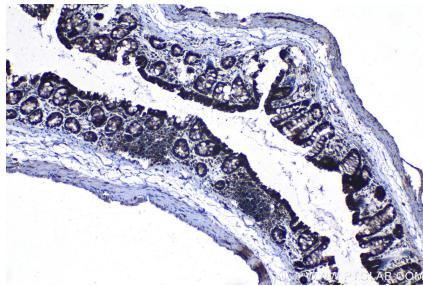
Immunohistochemical analysis of paraffin-embedded human pancreas cancer tissue slide using KHC1259 (ISCU IHC Kit).



Immunohistochemical analysis of paraffin-embedded human cervical cancer tissue slide using KHC1259 (ISCU IHC Kit).



Immunohistochemical analysis of paraffin-embedded mouse colon tissue slide using KHC1259 (ISCU IHC Kit).



Immunohistochemical analysis of paraffin-embedded rat colon tissue slide using KHC1259 (ISCU IHC Kit).