

IHC*easy* KIF26B Ready-To-Use IHC Kit

Catalog Number: **KHC1268**

General Information

Sample type:
FFPE tissue

Cited sample type:

Reactivity:
Human, Mouse, Rat

Cited Reactivity:

Assay type:
Immunohistochemistry

Primary antibody type:
Rabbit Polyclonal

Secondary antibody type:
Polymer-HRP-Goat anti-Rabbit

Kit Component

Component	Size	Concentration
Antigen Retrieval Buffer	100 mL	50×
Washing Buffer	100 mL ×2	20×
Blocking Buffer	5 mL	RTU
Primary Antibody	5 mL	RTU
Secondary Antibody	5 mL	RTU
Chromogen Component A	0.2 mL	RTU
Chromogen Component B	4 mL	RTU
Signal Enhancer	5 mL	RTU
Counter Staining Reagent	5 mL	RTU
Mounting Media	5 mL	RTU
Control Slide	1 slide (Optional)	FFPE
Datasheet	1 Copy	
Manual	1 Copy	

Storage Instructions

All the reagents are stored at 2-8°C. The kit is stable for 6 months from the date of receipt.

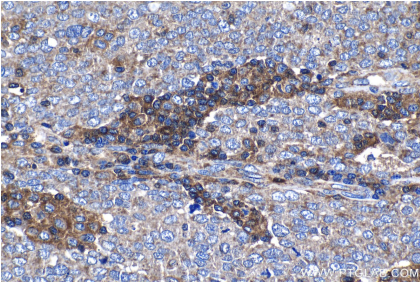
Background

KIF26B is a member of kinesin-11 family and plays important role in embryogenesis. It is a downstream target of Sall1 and is essential for kidney development. KIF26B is also involved in tumorigenesis.

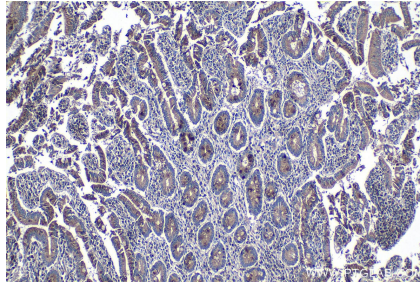
Synonyms

KIF26B, kinesin family member 26B, Kinesin like protein KIF26B

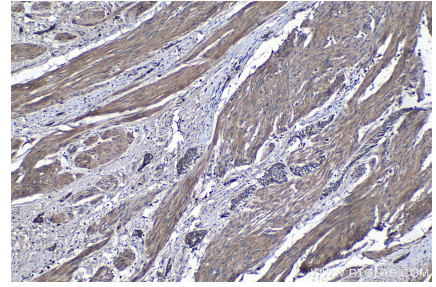
Selected Validation Data



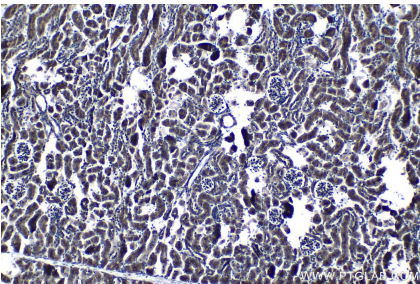
Immunohistochemical analysis of paraffin-embedded human ovary tumor tissue slide using KHC1268 (KIF26B IHC Kit).



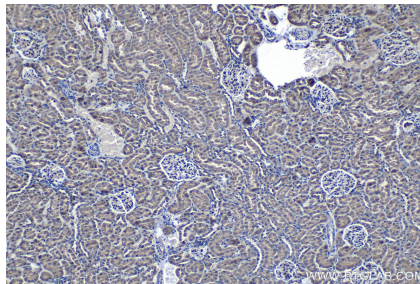
Immunohistochemical analysis of paraffin-embedded human stomach cancer tissue slide using KHC1268 (KIF26B IHC Kit).



Immunohistochemical analysis of paraffin-embedded human urothelial carcinoma tissue slide using KHC1268 (KIF26B IHC Kit).



Immunohistochemical analysis of paraffin-embedded mouse kidney tissue slide using KHC1268 (KIF26B IHC Kit).



Immunohistochemical analysis of paraffin-embedded rat kidney tissue slide using KHC1268 (KIF26B IHC Kit).