

IHC*easy* UQCRFS1 Ready-To-Use IHC Kit

Catalog Number: **KHC1275**

General Information

Sample type:
FFPE tissue

Cited sample type:

Reactivity:
Human, Mouse, Rat

Cited Reactivity:

Assay type:
Immunohistochemistry

Primary antibody type:
Rabbit Polyclonal

Secondary antibody type:
Polymer-HRP-Goat anti-Rabbit

Kit Component

Component	Size	Concentration
Antigen Retrieval Buffer	100 mL	50×
Washing Buffer	100 mL ×2	20×
Blocking Buffer	5 mL	RTU
Primary Antibody	5 mL	RTU
Secondary Antibody	5 mL	RTU
Chromogen Component A	0.2 mL	RTU
Chromogen Component B	4 mL	RTU
Signal Enhancer	5 mL	RTU
Counter Staining Reagent	5 mL	RTU
Mounting Media	5 mL	RTU
Control Slide	1 slide (Optional)	FFPE
Datasheet	1 Copy	
Manual	1 Copy	

Storage Instructions

All the reagents are stored at 2-8°C. The kit is stable for 6 months from the date of receipt.

Background

The ubiquinol cytochrome c reductase UQCRFS1 is a key subunit of the cytochrome bc1 complex (complex III) of the mitochondrial respiratory chain. The UQCRFS1 gene encode a 30 kDa protein with a transit peptide and it appears to be involved in development of more aggressive phenotype of breast cancer. UQCRFS1 is also named as RISP, complex III subunit 5, cytochrome b-c1 complex subunit 5 and rieske iron-sulfur protein.

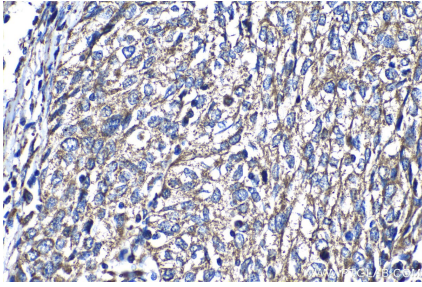
Synonyms

Complex III subunit 5, Complex III subunit IX, Rieske iron sulfur protein, RIP1, RIS1, RISP, UQCR5, UQCRFS1

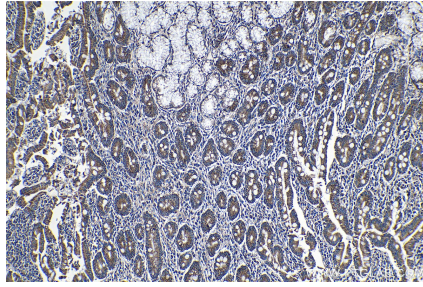
For technical support and original validation data for this product please contact:
T: 1 (888) 4PTGLAB (1-888-478-4522) (toll free in USA), or 1(312) 455-8498 (outside USA)
E: proteintech@ptglab.com
W: ptglab.com

This product is exclusively available under Proteintech Group brand and is not available to purchase from any other manufacturer.

Selected Validation Data



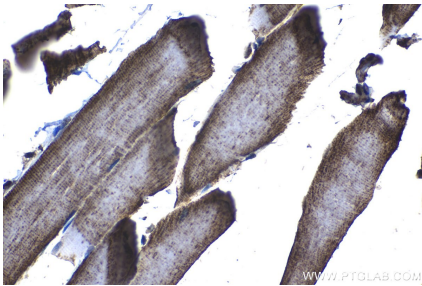
Immunohistochemical analysis of paraffin-embedded human cervical cancer tissue slide using KHC1275 (UQCRFS1 IHC Kit).



Immunohistochemical analysis of paraffin-embedded human stomach cancer tissue slide using KHC1275 (UQCRFS1 IHC Kit).



Immunohistochemical analysis of paraffin-embedded mouse skeletal muscle tissue slide using KHC1275 (UQCRFS1 IHC Kit).



Immunohistochemical analysis of paraffin-embedded rat skeletal muscle tissue slide using KHC1275 (UQCRFS1 IHC Kit).