

IHC*easy* NHE1/SLC9A1 Ready-To-Use IHC Kit

Catalog Number: **KHC1288**

General Information

Sample type:
FFPE tissue

Cited sample type:

Reactivity:
Human, Mouse, Rat

Cited Reactivity:

Assay type:
Immunohistochemistry

Primary antibody type:
Rabbit Polyclonal

Secondary antibody type:
Polymer-HRP-Goat anti-Rabbit

Kit Component

Component	Size	Concentration
Antigen Retrieval Buffer	100 mL	50×
Washing Buffer	100 mL × 2	20×
Blocking Buffer	5 mL	RTU
Primary Antibody	5 mL	RTU
Secondary Antibody	5 mL	RTU
Chromogen Component A	0.2 mL	RTU
Chromogen Component B	4 mL	RTU
Signal Enhancer	5 mL	RTU
Counter Staining Reagent	5 mL	RTU
Mounting Media	5 mL	RTU
Control Slide	1 slide (Optional)	FFPE
Datasheet	1 Copy	
Manual	1 Copy	

Storage Instructions

All the reagents are stored at 2-8°C. The kit is stable for 6 months from the date of receipt.

Background

NHE1, also named as SLC9A1, encodes an Na⁺/H⁺ antiporter that is a membrane-bound enzyme involved in regulating pH of vertebrate cells. NHE1 regulates a number of cell behaviors, including adhesion, shape determination, migration, and proliferation. It is inhibited by the non-specific diuretic drug amiloride and activated by growth factors, mitogens, neurotransmitters, tumor promoters, and others. NHE1 is expressed in heart where it contributes to cardiomyocyte pH homeostasis.

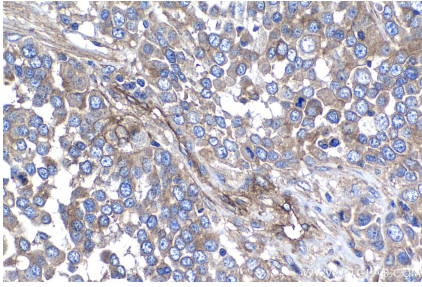
Synonyms

APNH, APNH1, FLJ42224, Na⁽⁺⁾/H⁽⁺⁾ exchanger 1, NHE 1, NHE1, SLC9A1, Sodium/hydrogen exchanger 1

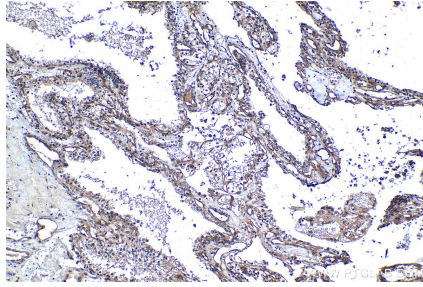
For technical support and original validation data for this product please contact:
T: 1 (888) 4PTGLAB (1-888-478-4522) (toll free in USA), or 1(312) 455-8498 (outside USA)
E: proteintech@ptglab.com
W: ptglab.com

This product is exclusively available under Proteintech Group brand and is not available to purchase from any other manufacturer.

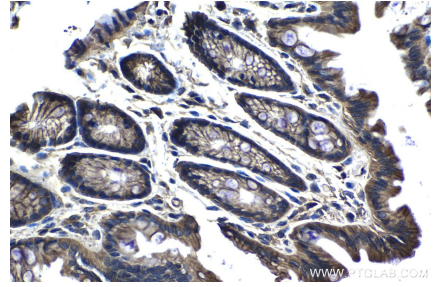
Selected Validation Data



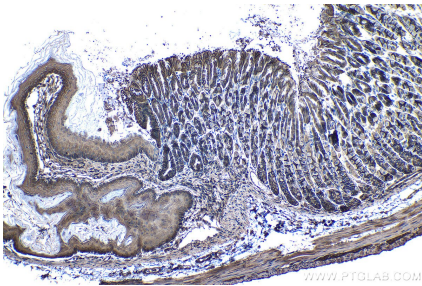
Immunohistochemical analysis of paraffin-embedded human ovary tumor tissue slide using KHC1288 (NHE1/SLC9A1 IHC Kit).



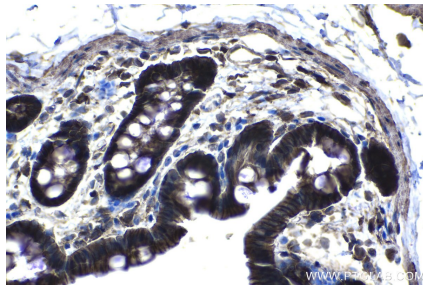
Immunohistochemical analysis of paraffin-embedded human renal cell carcinoma tissue slide using KHC1288 (NHE1/SLC9A1 IHC Kit).



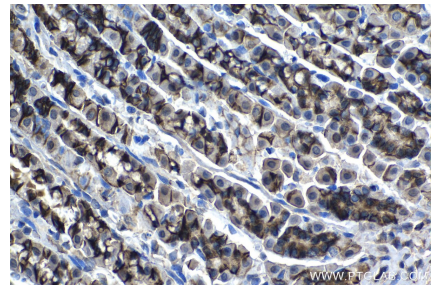
Immunohistochemical analysis of paraffin-embedded mouse colon tissue slide using KHC1288 (NHE1/SLC9A1 IHC Kit).



Immunohistochemical analysis of paraffin-embedded mouse stomach tissue slide using KHC1288 (NHE1/SLC9A1 IHC Kit).



Immunohistochemical analysis of paraffin-embedded rat colon tissue slide using KHC1288 (NHE1/SLC9A1 IHC Kit).



Immunohistochemical analysis of paraffin-embedded rat stomach tissue slide using KHC1288 (NHE1/SLC9A1 IHC Kit).