

IHC*easy* GBP5 Ready-To-Use IHC Kit

Catalog Number: **KHC1311**

General Information

Sample type:
FFPE tissue

Cited sample type:

Reactivity:
Human, Rat

Cited Reactivity:

Assay type:
Immunohistochemistry

Primary antibody type:
Rabbit Polyclonal

Secondary antibody type:
Polymer-HRP-Goat anti-Rabbit

Kit Component

Component	Size	Concentration
Antigen Retrieval Buffer	100 mL	50×
Washing Buffer	100 mL ×2	20×
Blocking Buffer	5 mL	RTU
Primary Antibody	5 mL	RTU
Secondary Antibody	5 mL	RTU
Chromogen Component A	0.2 mL	RTU
Chromogen Component B	4 mL	RTU
Signal Enhancer	5 mL	RTU
Counter Staining Reagent	5 mL	RTU
Mounting Media	5 mL	RTU
Control Slide	1 slide (Optional)	FFPE
Datasheet	1 Copy	
Manual	1 Copy	

Storage Instructions

All the reagents are stored at 2-8°C. The kit is stable for 6 months from the date of receipt.

Background

Guanylate binding protein (GBP) 5 belongs to the GBP family, which is involved in important cellular processes, including signal transduction, translation, vesicle trafficking, and exocytosis. GBP5 was reported to be a critical cellular factor in inflammasome assembly. Furthermore, GBP5 has been reported to induce inflammatory cytokines, including IL-1 beta and IL-18, through the activation of NLRP3 and AIM2. GBP5 encodes two isoforms: GBP-5a/b and GBP-5ta.

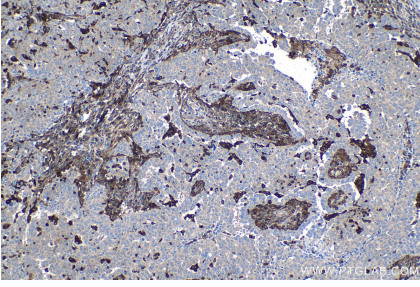
Synonyms

GBP, GBP 5, GBP TA antigen, GBP5, GTP binding protein 5, guanylate binding protein 5

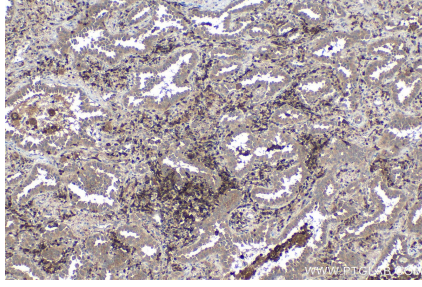
For technical support and original validation data for this product please contact:
T: 1 (888) 4PTGLAB (1-888-478-4522) (toll free in USA), or 1(312) 455-8498 (outside USA)
E: proteintech@ptglab.com
W: ptglab.com

This product is exclusively available under Proteintech Group brand and is not available to purchase from any other manufacturer.

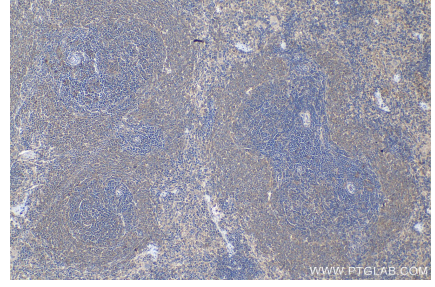
Selected Validation Data



Immunohistochemical analysis of paraffin-embedded human ovary tumor tissue slide using KHC1311 (GBP5 IHC Kit).



Immunohistochemical analysis of paraffin-embedded human lung cancer tissue slide using KHC1311 (GBP5 IHC Kit).



Immunohistochemical analysis of paraffin-embedded rat spleen tissue slide using KHC1311 (GBP5 IHC Kit).