

IHC*easy* CASP8 Ready-To-Use IHC Kit

Catalog Number: **KHC1312**

General Information

Sample type:
FFPE tissue
Cited sample type:
Reactivity:
Human
Cited Reactivity:

Assay type:
Immunohistochemistry
Primary antibody type:
Rabbit Polyclonal
Secondary antibody type:
Polymer-HRP-Goat anti-Rabbit

Kit Component

Component	Size	Concentration
Antigen Retrieval Buffer	100 mL	50×
Washing Buffer	100 mL ×2	20×
Blocking Buffer	5 mL	RTU
Primary Antibody	5 mL	RTU
Secondary Antibody	5 mL	RTU
Chromogen Component A	0.2 mL	RTU
Chromogen Component B	4 mL	RTU
Signal Enhancer	5 mL	RTU
Counter Staining Reagent	5 mL	RTU
Mounting Media	5 mL	RTU
Control Slide	1 slide (Optional)	FFPE
Datasheet	1 Copy	
Manual	1 Copy	

Storage Instructions

All the reagents are stored at 2-8°C. The kit is stable for 6 months from the date of receipt.

Background

CASP8, also named as MCH5, MACH, FLICE, and CAP4, belongs to the peptidase C14A family. It may participate in the GZMB apoptotic pathways and functions as an upstream regulator in a-bisabolol-induced apoptosis. CASP8 catalyzes an essential intermediate step in the ubiquitination and proteasome-mediated degradation of IRF3. It may control diabetic embryopathy-associated apoptosis via regulation of the Bid-stimulated mitochondrion/caspase-9 pathway. CASP8 is expressed as nine isoforms by alternative splicing. Primary antibody in this kit can recognize the pro- and cleaved-caspase 8.

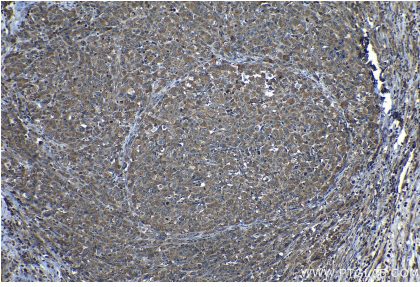
Synonyms

Apoptotic protease Mch 5, Casp 8, CASP8, Caspase 8, Caspase 8/p18, Caspase 8/p43/p18, caspase8, FADD like ICE, FLICE, ICE like apoptotic protease 5, MACH, MCH5, MORT1 associated ced 3 homolog

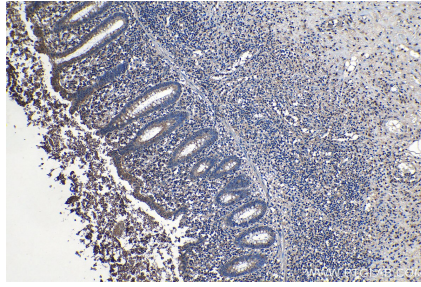
For technical support and original validation data for this product please contact:
T: 1 (888) 4PTGLAB (1-888-478-4522) (toll free in USA), or 1(312) 455-8498 (outside USA)
E: proteintech@ptglab.com
W: ptglab.com

This product is exclusively available under Proteintech Group brand and is not available to purchase from any other manufacturer.

Selected Validation Data



Immunohistochemical analysis of paraffin-embedded human lymphoma tissue slide using KHC1312 (CASP8 IHC Kit).



Immunohistochemical analysis of paraffin-embedded human appendicitis tissue slide using KHC1312 (CASP8 IHC Kit).