

IHC*easy* MRPL3 Ready-To-Use IHC Kit

Catalog Number: **KHC1315**

General Information

Sample type:
FFPE tissue

Cited sample type:

Reactivity:
Human, Mouse, Rat

Cited Reactivity:

Assay type:
Immunohistochemistry

Primary antibody type:
Rabbit Polyclonal

Secondary antibody type:
Polymer-HRP-Goat anti-Rabbit

Kit Component

Component	Size	Concentration
Antigen Retrieval Buffer	100 mL	50×
Washing Buffer	100 mL ×2	20×
Blocking Buffer	5 mL	RTU
Primary Antibody	5 mL	RTU
Secondary Antibody	5 mL	RTU
Chromogen Component A	0.2 mL	RTU
Chromogen Component B	4 mL	RTU
Signal Enhancer	5 mL	RTU
Counter Staining Reagent	5 mL	RTU
Mounting Media	5 mL	RTU
Control Slide	1 slide (Optional)	FFPE
Datasheet	1 Copy	
Manual	1 Copy	

Storage Instructions

All the reagents are stored at 2-8°C. The kit is stable for 6 months from the date of receipt.

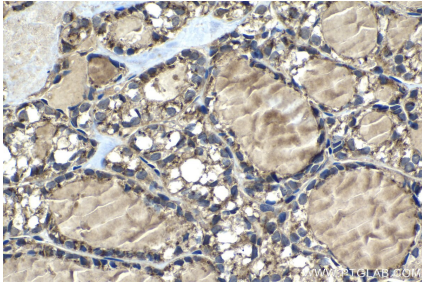
Background

MRPL3, also named as 39S ribosomal protein L3, mitochondrial or RPML3, is a 348 amino acid protein, which belongs to the ribosomal protein L3P family. MRPL3 localizes in the Mitochondrion and has an association with combined oxidative phosphorylation deficiency 9. MRPL3 plays role in the mitochondrial proteins biosynthesis and ribosomal structure and biogenesis.

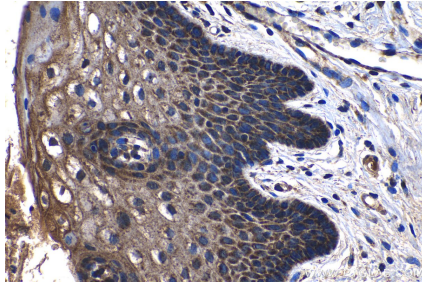
Synonyms

L3mt, MRL3, MRP L3, MRPL3, RPML3

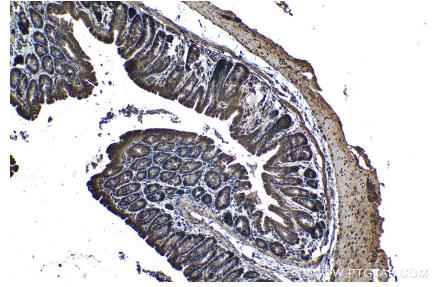
Selected Validation Data



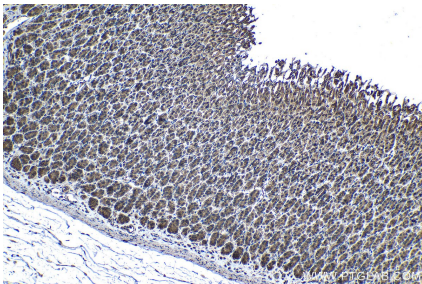
Immunohistochemical analysis of paraffin-embedded human thyroid cancer tissue slide using KHC1315 (MRPL3 IHC Kit).



Immunohistochemical analysis of paraffin-embedded human cervical cancer tissue slide using KHC1315 (MRPL3 IHC Kit).



Immunohistochemical analysis of paraffin-embedded mouse colon tissue slide using KHC1315 (MRPL3 IHC Kit).



Immunohistochemical analysis of paraffin-embedded rat stomach tissue slide using KHC1315 (MRPL3 IHC Kit).