

IHC*easy* SOX6 Ready-To-Use IHC Kit

Catalog Number: **KHC1337**

General Information

Sample type:
FFPE tissue

Cited sample type:

Reactivity:
Human, Mouse, Rat

Cited Reactivity:

Assay type:
Immunohistochemistry

Primary antibody type:
Rabbit Polyclonal

Secondary antibody type:
Polymer-HRP-Goat anti-Rabbit

Kit Component

Component	Size	Concentration
Antigen Retrieval Buffer	100 mL	50×
Washing Buffer	100 mL × 2	20×
Blocking Buffer	5 mL	RTU
Primary Antibody	5 mL	RTU
Secondary Antibody	5 mL	RTU
Chromogen Component A	0.2 mL	RTU
Chromogen Component B	4 mL	RTU
Signal Enhancer	5 mL	RTU
Counter Staining Reagent	5 mL	RTU
Mounting Media	5 mL	RTU
Control Slide	1 slide (Optional)	FFPE
Datasheet	1 Copy	
Manual	1 Copy	

Storage Instructions

All the reagents are stored at 2-8°C. The kit is stable for 6 months from the date of receipt.

Background

The Sex-determining Region Y (SRY)-related high-mobilitygroup box 6 (SOX6) is a transcription factor that was discovered in 1990s while searching for Sry-related genes. SOX6 belongs to the subfamily D of SOX protein and can recognize the conserved sequence of "(A/T)(A/T)CAA(A/T)G" within the transcriptional regulation region of the target gene with its HMG domain. Sox6 contains DNA binding domain and binds to the minor groove of DNA. The ability of SOX6 to interact with different proteins at different places and times, makes it an intricate protein with roles in multiple processes. SOX6 has been implicated in diabetic nephropathy, adipogenesis, cardiomyopathy, inflammatory bowel disease, and cancer.

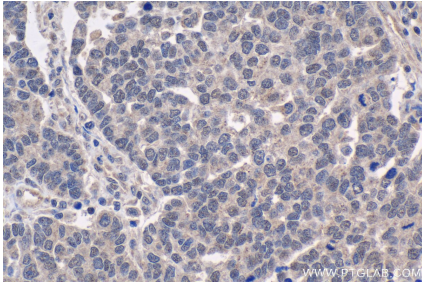
Synonyms

HSSOX6, SOX6, SOXD, Transcription factor SOX 6

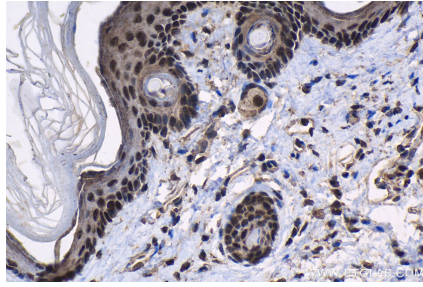
For technical support and original validation data for this product please contact:
T: 1 (888) 4PTGLAB (1-888-478-4522) (toll free in USA), or 1(312) 455-8498 (outside USA)
E: proteintech@ptglab.com
W: ptglab.com

This product is exclusively available under Proteintech Group brand and is not available to purchase from any other manufacturer.

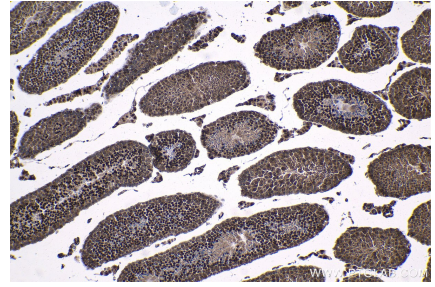
Selected Validation Data



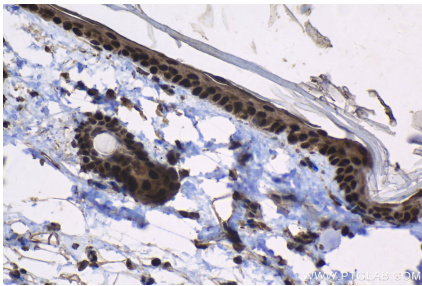
Immunohistochemical analysis of paraffin-embedded human ovary tumor tissue slide using KHC1337 (SOX6 IHC Kit).



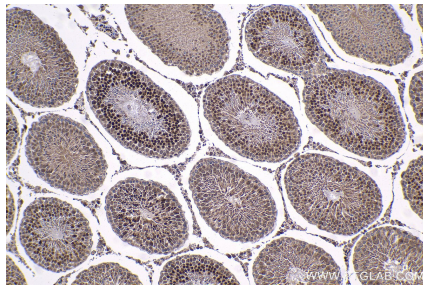
Immunohistochemical analysis of paraffin-embedded mouse skin tissue slide using KHC1337 (SOX6 IHC Kit).



Immunohistochemical analysis of paraffin-embedded mouse testis tissue slide using KHC1337 (SOX6 IHC Kit).



Immunohistochemical analysis of paraffin-embedded rat skin tissue slide using KHC1337 (SOX6 IHC Kit).



Immunohistochemical analysis of paraffin-embedded rat testis tissue slide using KHC1337 (SOX6 IHC Kit).