

# IHC*easy* TCL1A Ready-To-Use IHC Kit

Catalog Number: **KHC1347**

## General Information

**Sample type:**  
FFPE tissue

**Cited sample type:**

**Reactivity:**  
Human, Mouse, Rat

**Cited Reactivity:**

**Assay type:**  
Immunohistochemistry

**Primary antibody type:**  
Rabbit Polyclonal

**Secondary antibody type:**  
Polymer-HRP-Goat anti-Rabbit

## Kit Component

Component	Size	Concentration
Antigen Retrieval Buffer	100 mL	50×
Washing Buffer	100 mL ×2	20×
Blocking Buffer	5 mL	RTU
Primary Antibody	5 mL	RTU
Secondary Antibody	5 mL	RTU
Chromogen Component A	0.2 mL	RTU
Chromogen Component B	4 mL	RTU
Signal Enhancer	5 mL	RTU
Counter Staining Reagent	5 mL	RTU
Mounting Media	5 mL	RTU
Control Slide	1 slide (Optional)	FFPE
Datasheet	1 Copy	
Manual	1 Copy	

## Storage Instructions

All the reagents are stored at 2-8°C. The kit is stable for 6 months from the date of receipt.

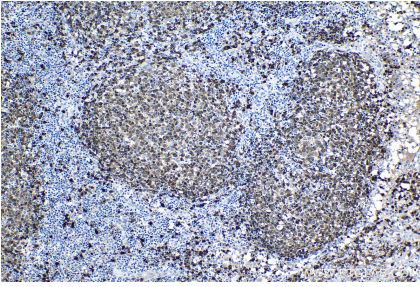
## Background

TCL1A, also named as TCL1 and p14 TCL1, enhances cell proliferation, stabilizes mitochondrial membrane potential and promotes cell survival. TCL1A immunodetection is an independent marker of adverse outcome that could be used in routine settings for the management of DLCL patients. TCL1A expression is correlated with shorter time to treatment in chronic lymphocytic leukemia cases and shorter lymphoma-specific survival in mantle cell lymphoma series. It is a potential therapeutic target.

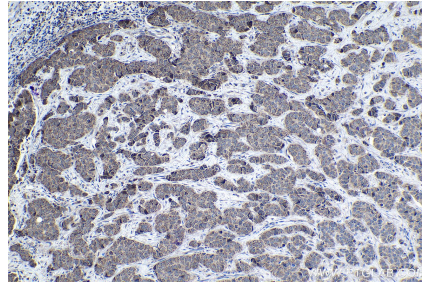
## Synonyms

Oncogene TCL 1, Oncogene TCL1, Protein p14 TCL1, T cell leukemia/lymphoma 1A, TCL1, TCL1A

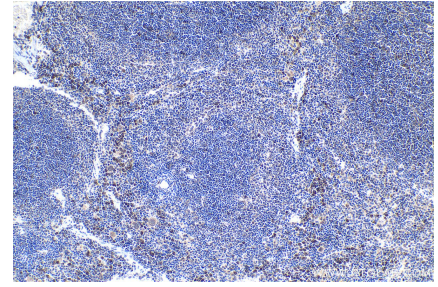
## Selected Validation Data



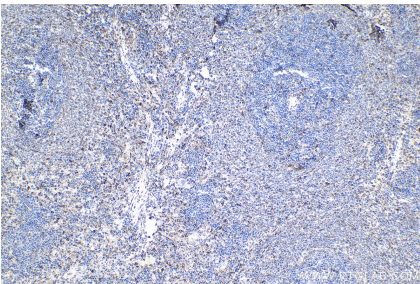
Immunohistochemical analysis of paraffin-embedded human lymphoma tissue slide using KHC1347 (TCL1A IHC Kit).



Immunohistochemical analysis of paraffin-embedded human breast cancer tissue slide using KHC1347 (TCL1A IHC Kit).



Immunohistochemical analysis of paraffin-embedded mouse spleen tissue slide using KHC1347 (TCL1A IHC Kit).



Immunohistochemical analysis of paraffin-embedded rat spleen tissue slide using KHC1347 (TCL1A IHC Kit).