

# IHC*easy* APOOL Ready-To-Use IHC Kit

Catalog Number: **KHC1352**

## General Information

**Sample type:**  
FFPE tissue

**Cited sample type:**

**Reactivity:**  
Human, Mouse, Rat

**Cited Reactivity:**

**Assay type:**  
Immunohistochemistry

**Primary antibody type:**  
Rabbit Polyclonal

**Secondary antibody type:**  
Polymer-HRP-Goat anti-Rabbit

## Kit Component

Component	Size	Concentration
Antigen Retrieval Buffer	100 mL	50×
Washing Buffer	100 mL ×2	20×
Blocking Buffer	5 mL	RTU
Primary Antibody	5 mL	RTU
Secondary Antibody	5 mL	RTU
Chromogen Component A	0.2 mL	RTU
Chromogen Component B	4 mL	RTU
Signal Enhancer	5 mL	RTU
Counter Staining Reagent	5 mL	RTU
Mounting Media	5 mL	RTU
Control Slide	1 slide (Optional)	FFPE
Datasheet	1 Copy	
Manual	1 Copy	

## Storage Instructions

All the reagents are stored at 2-8°C. The kit is stable for 6 months from the date of receipt.

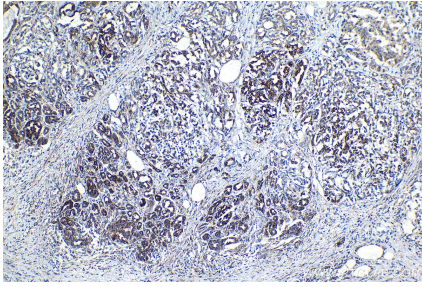
## Background

APOOL, the component of the MICOS complex, is a large protein complex of the mitochondrial inner membrane that plays crucial roles in the maintenance of crista junctions, inner membrane architecture, and formation of contact sites to the outer membrane. Specifically binds to cardiolipin (in vitro) but not to the precursor lipid phosphatidylglycerol. Plays a crucial role in crista junction formation and mitochondrial function.

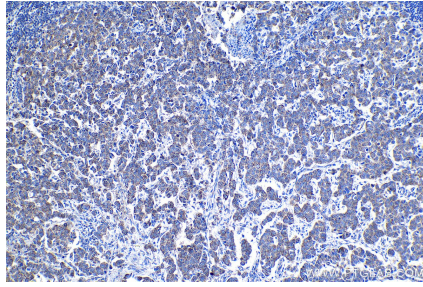
## Synonyms

apolipoprotein O like, APOOL, CXorf33, FAM121A, MIC27, Protein FAM121A, UNQ8193

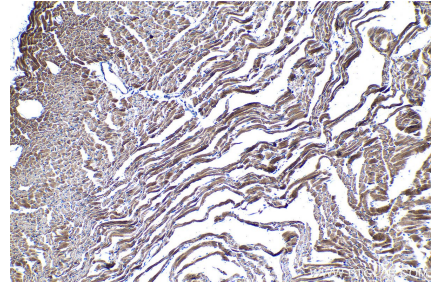
## Selected Validation Data



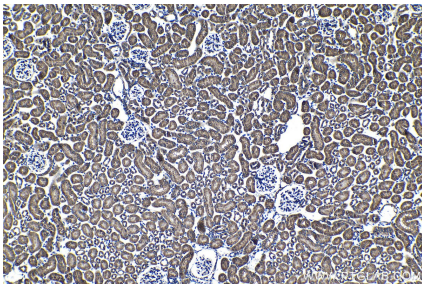
Immunohistochemical analysis of paraffin-embedded human pancreas cancer tissue slide using KHC1352 (APOOL IHC Kit).



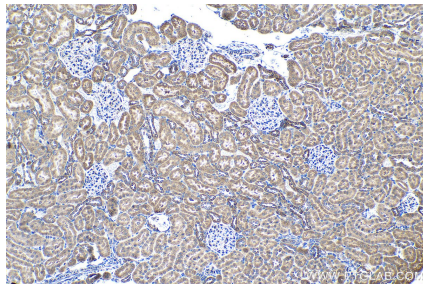
Immunohistochemical analysis of paraffin-embedded human breast cancer tissue slide using KHC1352 (APOOL IHC Kit).



Immunohistochemical analysis of paraffin-embedded mouse heart tissue slide using KHC1352 (APOOL IHC Kit).



Immunohistochemical analysis of paraffin-embedded mouse kidney tissue slide using KHC1352 (APOOL IHC Kit).



Immunohistochemical analysis of paraffin-embedded rat kidney tissue slide using KHC1352 (APOOL IHC Kit).