

# IHC*easy* ATP5J Ready-To-Use IHC Kit

Catalog Number: **KHC1353**

## General Information

**Sample type:**  
FFPE tissue

**Cited sample type:**

**Reactivity:**  
Human, Mouse, Rat

**Cited Reactivity:**

**Assay type:**  
Immunohistochemistry

**Primary antibody type:**  
Rabbit Polyclonal

**Secondary antibody type:**  
Polymer-HRP-Goat anti-Rabbit

## Kit Component

Component	Size	Concentration
Antigen Retrieval Buffer	100 mL	50×
Washing Buffer	100 mL × 2	20×
Blocking Buffer	5 mL	RTU
Primary Antibody	5 mL	RTU
Secondary Antibody	5 mL	RTU
Chromogen Component A	0.2 mL	RTU
Chromogen Component B	4 mL	RTU
Signal Enhancer	5 mL	RTU
Counter Staining Reagent	5 mL	RTU
Mounting Media	5 mL	RTU
Control Slide	1 slide (Optional)	FFPE
Datasheet	1 Copy	
Manual	1 Copy	

## Storage Instructions

All the reagents are stored at 2-8°C. The kit is stable for 6 months from the date of receipt.

## Background

ATP5J, also known as coupling factor 6 (CF6), is a soluble integral component of mitochondrial ATP synthase. Mitochondrial ATP synthase is a multi-subunit membrane-bound enzyme that catalyzes the synthesis of ATP by utilizing a proton electrochemical gradient. It consists of three domains, namely the extrinsic and intrinsic membrane domains (F1 and F0, respectively) joined by a stalk. CF6 is one of the subunits in the stalk and an essential component for energy transduction. Recently CF6 has also been reported to play a crucial role in the development of INS resistance and hypertension. CF6 is first synthesized as an immature form in the cytosol, then transported to the mitochondria by an import signal peptide and becomes an active form with the signal peptide cleaved.

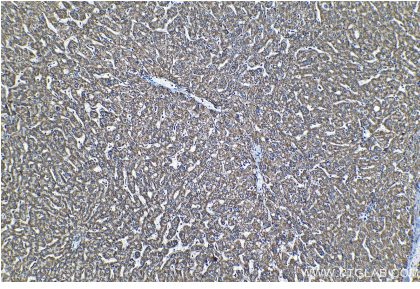
## Synonyms

ATP5, ATP5A, ATP5J, ATPase subunit F6, ATPM, CF6, F6

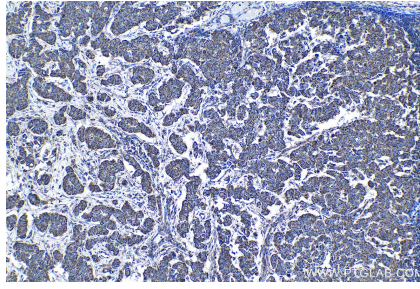
For technical support and original validation data for this product please contact:  
T: 1 (888) 4PTGLAB (1-888-478-4522) (toll free in USA), or 1(312) 455-8498 (outside USA) E: [proteintech@ptglab.com](mailto:proteintech@ptglab.com) W: [ptglab.com](http://ptglab.com)

This product is exclusively available under Proteintech Group brand and is not available to purchase from any other manufacturer.

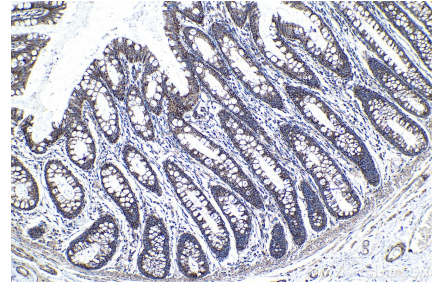
## Selected Validation Data



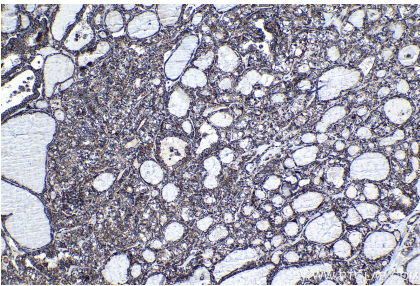
Immunohistochemical analysis of paraffin-embedded human liver tissue slide using KHC1353 (ATP5J IHC Kit).



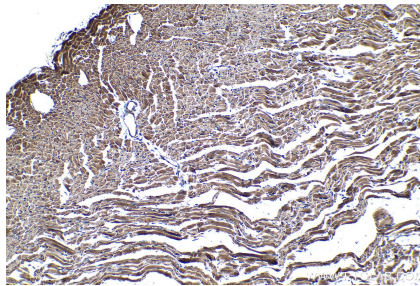
Immunohistochemical analysis of paraffin-embedded human breast cancer tissue slide using KHC1353 (ATP5J IHC Kit).



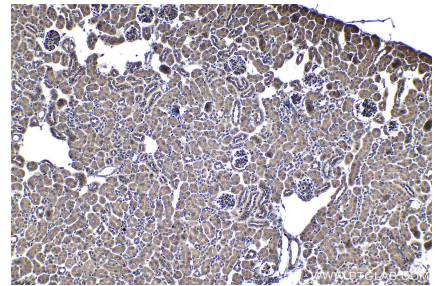
Immunohistochemical analysis of paraffin-embedded human colon tissue slide using KHC1353 (ATP5J IHC Kit).



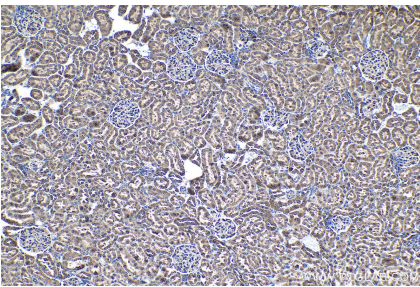
Immunohistochemical analysis of paraffin-embedded human thyroid cancer tissue slide using KHC1353 (ATP5J IHC Kit).



Immunohistochemical analysis of paraffin-embedded mouse heart tissue slide using KHC1353 (ATP5J IHC Kit).



Immunohistochemical analysis of paraffin-embedded mouse kidney tissue slide using KHC1353 (ATP5J IHC Kit).



Immunohistochemical analysis of paraffin-embedded rat kidney tissue slide using KHC1353 (ATP5J IHC Kit).