

IHC*easy* CLSTN1 Ready-To-Use IHC Kit

Catalog Number: **KHC1359**

General Information

Sample type:
FFPE tissue

Cited sample type:

Reactivity:
Human, Mouse, Rat

Cited Reactivity:

Assay type:
Immunohistochemistry

Primary antibody type:
Rabbit Polyclonal

Secondary antibody type:
Polymer-HRP-Goat anti-Rabbit

Kit Component

Component	Size	Concentration
Antigen Retrieval Buffer	100 mL	50×
Washing Buffer	100 mL ×2	20×
Blocking Buffer	5 mL	RTU
Primary Antibody	5 mL	RTU
Secondary Antibody	5 mL	RTU
Chromogen Component A	0.2 mL	RTU
Chromogen Component B	4 mL	RTU
Signal Enhancer	5 mL	RTU
Counter Staining Reagent	5 mL	RTU
Mounting Media	5 mL	RTU
Control Slide	1 slide (Optional)	FFPE
Datasheet	1 Copy	
Manual	1 Copy	

Storage Instructions

All the reagents are stored at 2-8°C. The kit is stable for 6 months from the date of receipt.

Background

Calsyntenins (calsyntenin-1, -2, -3) compose a family of neuronally expressed proteins that belong to the cadherin superfamily of cell adhesion molecules. Calsyntenin-1 (CLSTN1) is a proteolytically processed postsynaptic membrane protein with a cytoplasmic calcium-binding domain. By binding Ca²⁺, calsyntenin-1 may modulate Ca²⁺-mediated postsynaptic signals. Calsyntenin-1 is a transmembrane cargo-docking protein for Kinesin-1-mediated vesicular transport. It can mediate axonal transport of the amyloid precursor protein and regulate Aβ production.

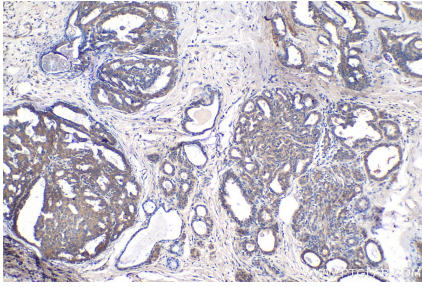
Synonyms

ALC ALPHA, Alcadin alpha, alalpha1, alalpha2, C terminal fragment 1 alpha, calsyntenin 1, Calsyntenin-1, CLSTN1, CS1, CSTN1, KIAA0911, PIK3CD, SAlc alpha CTF1 alpha, XB31alpha

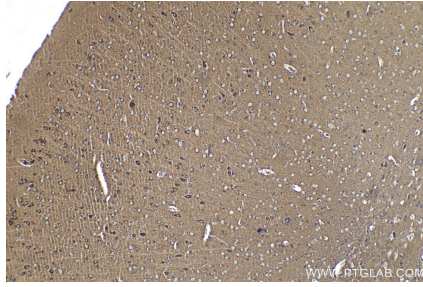
For technical support and original validation data for this product please contact:
T: 1 (888) 4PTGLAB (1-888-478-4522) (toll free in USA), or 1(312) 455-8498 (outside USA)
E: proteintech@ptglab.com
W: ptglab.com

This product is exclusively available under Proteintech Group brand and is not available to purchase from any other manufacturer.

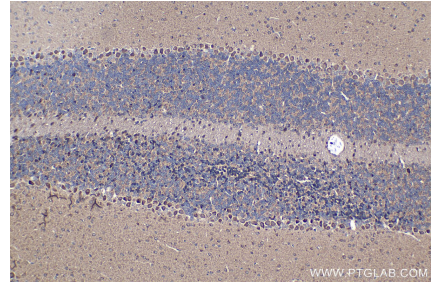
Selected Validation Data



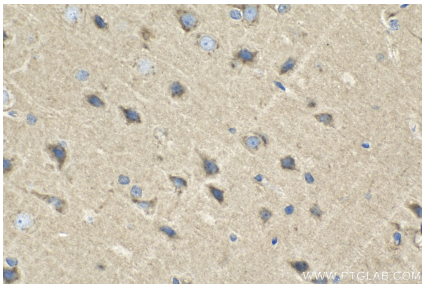
Immunohistochemical analysis of paraffin-embedded human breast cancer tissue slide using KHC1359 (CLSTN1 IHC Kit).



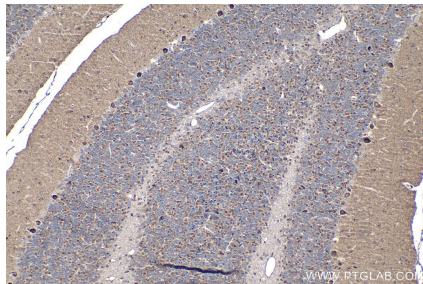
Immunohistochemical analysis of paraffin-embedded mouse brain tissue slide using KHC1359 (CLSTN1 IHC Kit).



Immunohistochemical analysis of paraffin-embedded mouse cerebellum tissue slide using KHC1359 (CLSTN1 IHC Kit).



Immunohistochemical analysis of paraffin-embedded rat brain tissue slide using KHC1359 (CLSTN1 IHC Kit).



Immunohistochemical analysis of paraffin-embedded rat cerebellum tissue slide using KHC1359 (CLSTN1 IHC Kit).