

IHC*easy* IMMT Ready-To-Use IHC Kit

Catalog Number: **KHC1362**

General Information

Sample type:
FFPE tissue

Cited sample type:

Reactivity:
Human, Mouse, Rat

Cited Reactivity:

Assay type:
Immunohistochemistry

Primary antibody type:
Rabbit Polyclonal

Secondary antibody type:
Polymer-HRP-Goat anti-Rabbit

Kit Component

Component	Size	Concentration
Antigen Retrieval Buffer	100 mL	50×
Washing Buffer	100 mL ×2	20×
Blocking Buffer	5 mL	RTU
Primary Antibody	5 mL	RTU
Secondary Antibody	5 mL	RTU
Chromogen Component A	0.2 mL	RTU
Chromogen Component B	4 mL	RTU
Signal Enhancer	5 mL	RTU
Counter Staining Reagent	5 mL	RTU
Mounting Media	5 mL	RTU
Control Slide	1 slide (Optional)	FFPE
Datasheet	1 Copy	
Manual	1 Copy	

Storage Instructions

All the reagents are stored at 2-8°C. The kit is stable for 6 months from the date of receipt.

Background

IMMT (also known as mitofilin) is an inner mitochondrial membrane protein that is preferentially expressed in heart tissue and is commonly used as the marker for mitochondria. Mitofilin is known to be a critical organizer of mitochondrial cristae morphology and is indispensable for normal mitochondrial function. Three isoforms of mitofilin exist due to the alternative splicing.

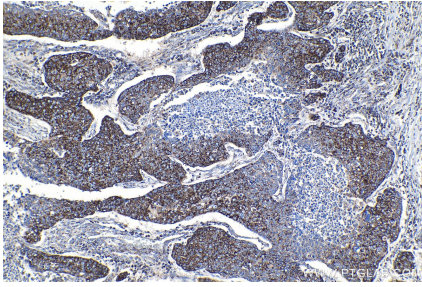
Synonyms

HMP, IMMT, MIC60, MINOS2, Mitofilin, P87, P87/89, P89, PIG4, PIG52

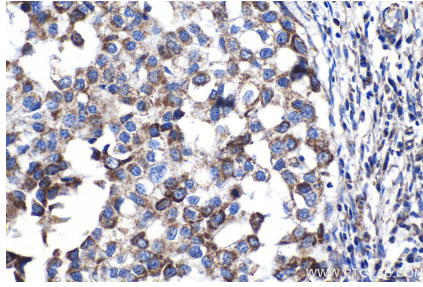
For technical support and original validation data for this product please contact:
T: 1 (888) 4PTGLAB (1-888-478-4522) (toll free in USA), or 1(312) 455-8498 (outside USA)
E: proteintech@ptglab.com
W: ptglab.com

This product is exclusively available under Proteintech Group brand and is not available to purchase from any other manufacturer.

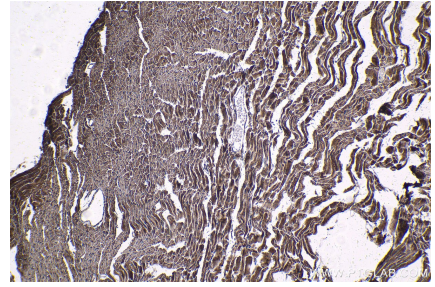
Selected Validation Data



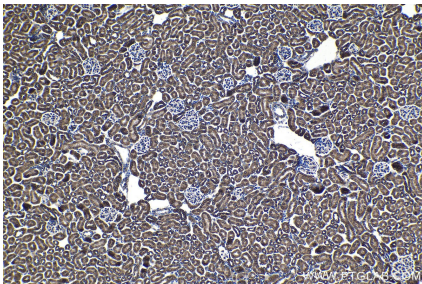
Immunohistochemical analysis of paraffin-embedded human lung cancer tissue slide using KHC1362 (IMMT IHC Kit).



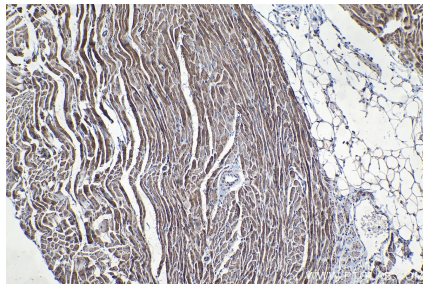
Immunohistochemical analysis of paraffin-embedded human breast cancer tissue slide using KHC1362 (IMMT IHC Kit).



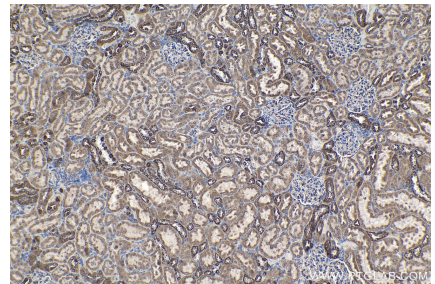
Immunohistochemical analysis of paraffin-embedded mouse heart tissue slide using KHC1362 (IMMT IHC Kit).



Immunohistochemical analysis of paraffin-embedded mouse kidney tissue slide using KHC1362 (IMMT IHC Kit).



Immunohistochemical analysis of paraffin-embedded rat heart tissue slide using KHC1362 (IMMT IHC Kit).



Immunohistochemical analysis of paraffin-embedded rat kidney tissue slide using KHC1362 (IMMT IHC Kit).