

# IHC*easy* GABPB1 Ready-To-Use IHC Kit

Catalog Number: **KHC1384**

## General Information

**Sample type:**  
FFPE tissue

**Cited sample type:**

**Reactivity:**  
Human, Mouse, Rat

**Cited Reactivity:**

**Assay type:**  
Immunohistochemistry

**Primary antibody type:**  
Rabbit Polyclonal

**Secondary antibody type:**  
Polymer-HRP-Goat anti-Rabbit

## Kit Component

Component	Size	Concentration
Antigen Retrieval Buffer	100 mL	50×
Washing Buffer	100 mL ×2	20×
Blocking Buffer	5 mL	RTU
Primary Antibody	5 mL	RTU
Secondary Antibody	5 mL	RTU
Chromogen Component A	0.2 mL	RTU
Chromogen Component B	4 mL	RTU
Signal Enhancer	5 mL	RTU
Counter Staining Reagent	5 mL	RTU
Mounting Media	5 mL	RTU
Control Slide	1 slide (Optional)	FFPE
Datasheet	1 Copy	
Manual	1 Copy	

## Storage Instructions

All the reagents are stored at 2-8°C. The kit is stable for 6 months from the date of receipt.

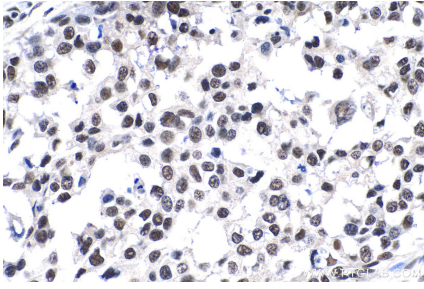
## Background

GABPB1, also named as E4TF1B, GABPB, GABPB2, E4TF1-47 and E4TF1-53, is a transcription factor capable of interacting with purine rich repeats (GA repeats). It is necessary for the expression of the Adenovirus E4 gene.

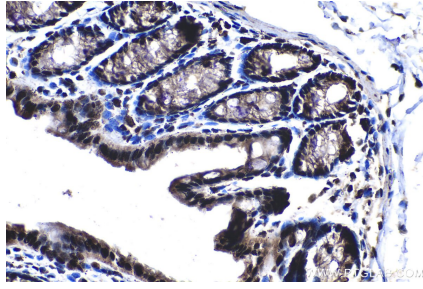
## Synonyms

BABPB2, E4TF1, E4TF1 47, E4TF1 53, E4TF1B, GABP subunit beta 1, GABP subunit beta 2, GABPB, GABPB 1, GABPB 2, GABPB1, GABPB2, NRF2B1, NRF2B2, Nuclear respiratory factor 2, Transcription factor E4TF1 47, Transcription factor E4TF1 53

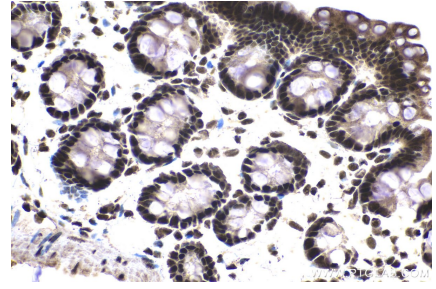
## Selected Validation Data



Immunohistochemical analysis of paraffin-embedded human breast cancer tissue slide using KHC1384 (GABPB1 IHC Kit).



Immunohistochemical analysis of paraffin-embedded mouse colon tissue slide using KHC1384 (GABPB1 IHC Kit).



Immunohistochemical analysis of paraffin-embedded rat colon tissue slide using KHC1384 (GABPB1 IHC Kit).