

# IHC*easy* SMARCC2 Ready-To-Use IHC Kit

Catalog Number: **KHC1398**

## General Information

**Sample type:**  
FFPE tissue

**Cited sample type:**

**Reactivity:**  
Human, Mouse, Rat

**Cited Reactivity:**

**Assay type:**  
Immunohistochemistry

**Primary antibody type:**  
Rabbit Polyclonal

**Secondary antibody type:**  
Polymer-HRP-Goat anti-Rabbit

## Kit Component

Component	Size	Concentration
Antigen Retrieval Buffer	100 mL	50×
Washing Buffer	100 mL ×2	20×
Blocking Buffer	5 mL	RTU
Primary Antibody	5 mL	RTU
Secondary Antibody	5 mL	RTU
Chromogen Component A	0.2 mL	RTU
Chromogen Component B	4 mL	RTU
Signal Enhancer	5 mL	RTU
Counter Staining Reagent	5 mL	RTU
Mounting Media	5 mL	RTU
Control Slide	1 slide (Optional)	FFPE
Datasheet	1 Copy	
Manual	1 Copy	

## Storage Instructions

All the reagents are stored at 2-8°C. The kit is stable for 6 months from the date of receipt.

## Background

BAF170, also named as SWI/SNF complex 170 kDa subunit or SMARCC2, is a 1214 amino acid protein, which belongs to the SMARCC family. BAF170 is ubiquitously expressed. BAF170 is involved in transcriptional activation and repression of select genes by chromatin remodeling. BAF170 may be required for CoREST dependent repression of neuronal specific gene promoters in non-neuronal cells. BAF170 belongs to the neural progenitors-specific chromatin remodeling complex (npBAF complex) and the neuron-specific chromatin remodeling complex (nBAF complex).

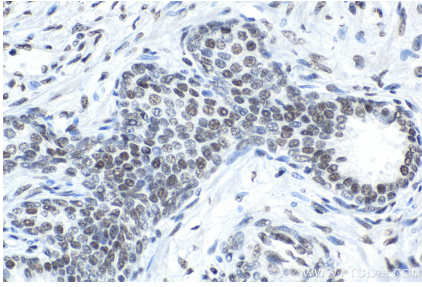
## Synonyms

BAF170, BRG1 associated factor 170, CRACC2, Rsc8, SMARCC2

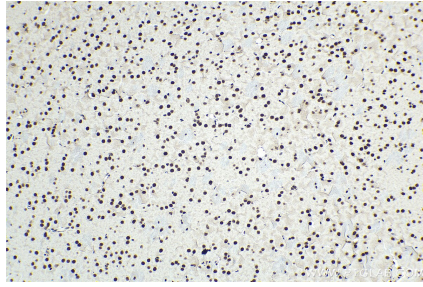
For technical support and original validation data for this product please contact:  
T: 1 (888) 4PTGLAB (1-888-478-4522) (toll free in USA), or 1(312) 455-8498 (outside USA)  
E: [proteintech@ptglab.com](mailto:proteintech@ptglab.com)  
W: [ptglab.com](http://ptglab.com)

This product is exclusively available under Proteintech Group brand and is not available to purchase from any other manufacturer.

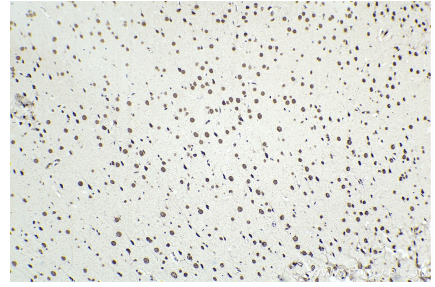
## Selected Validation Data



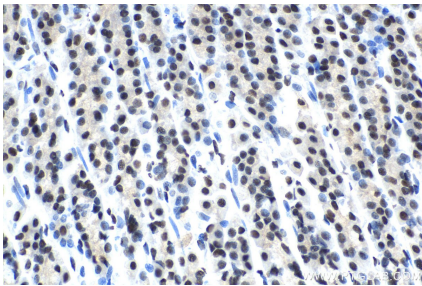
Immunohistochemical analysis of paraffin-embedded human prostate cancer tissue slide using KHC1398 (SMARCC2 IHC Kit).



Immunohistochemical analysis of paraffin-embedded mouse brain tissue slide using KHC1398 (SMARCC2 IHC Kit).



Immunohistochemical analysis of paraffin-embedded rat brain tissue slide using KHC1398 (SMARCC2 IHC Kit).



Immunohistochemical analysis of paraffin-embedded rat stomach tissue slide using KHC1398 (SMARCC2 IHC Kit).