

IHC*easy* MOAP1 Ready-To-Use IHC Kit

Catalog Number: **KHC1401**

General Information

Sample type:
FFPE tissue

Cited sample type:

Reactivity:
Human, Mouse, Rat

Cited Reactivity:

Assay type:
Immunohistochemistry

Primary antibody type:
Rabbit Polyclonal

Secondary antibody type:
Polymer-HRP-Goat anti-Rabbit

Kit Component

Component	Size	Concentration
Antigen Retrieval Buffer	100 mL	50×
Washing Buffer	100 mL ×2	20×
Blocking Buffer	5 mL	RTU
Primary Antibody	5 mL	RTU
Secondary Antibody	5 mL	RTU
Chromogen Component A	0.2 mL	RTU
Chromogen Component B	4 mL	RTU
Signal Enhancer	5 mL	RTU
Counter Staining Reagent	5 mL	RTU
Mounting Media	5 mL	RTU
Control Slide	1 slide (Optional)	FFPE
Datasheet	1 Copy	
Manual	1 Copy	

Storage Instructions

All the reagents are stored at 2-8°C. The kit is stable for 6 months from the date of receipt.

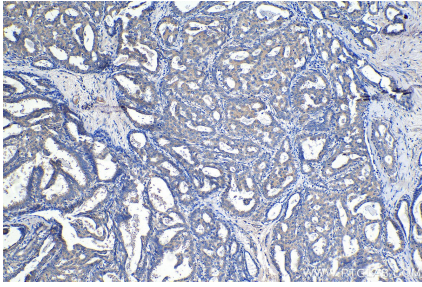
Background

Modulator of apoptosis 1 (MOAP1, also known as MAP-1 and PNMA4) belongs to the PNMA family and is expressed in various types of tissues. MAP1 contains a central BH3-like motif and interacts with the BAX protei. It plays a central role in mitochondria and death receptor-mediated apoptosis and is associated with many diseases such as cancers and neurological diseases.

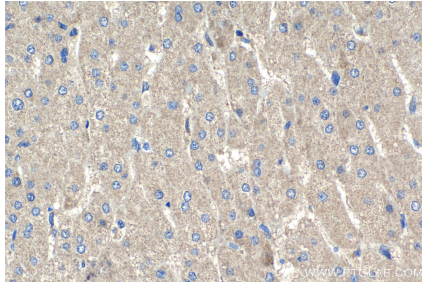
Synonyms

MAP 1, MAP1, MOAP1, modulator of apoptosis 1, Paraneoplastic antigen Ma4, PNMA4

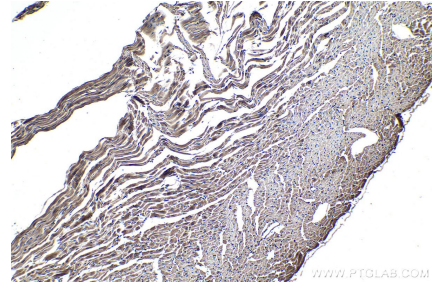
Selected Validation Data



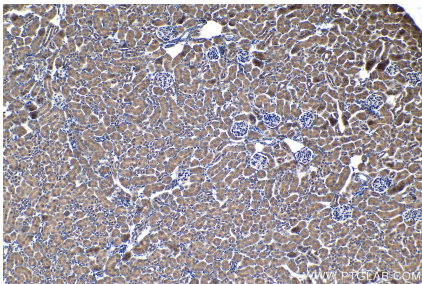
Immunohistochemical analysis of paraffin-embedded human breast cancer tissue slide using KHC1401 (MOAP1 IHC Kit).



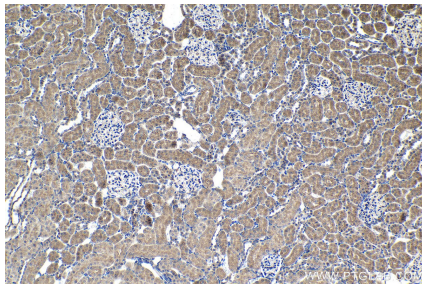
Immunohistochemical analysis of paraffin-embedded human liver tissue slide using KHC1401 (MOAP1 IHC Kit).



Immunohistochemical analysis of paraffin-embedded mouse heart tissue slide using KHC1401 (MOAP1 IHC Kit).



Immunohistochemical analysis of paraffin-embedded mouse kidney tissue slide using KHC1401 (MOAP1 IHC Kit).



Immunohistochemical analysis of paraffin-embedded rat kidney tissue slide using KHC1401 (MOAP1 IHC Kit).