

IHC*easy* CLOCK Ready-To-Use IHC Kit

Catalog Number: **KHC1447**

General Information

Sample type:
FFPE tissue

Cited sample type:

Reactivity:
Human, Mouse, Rat

Cited Reactivity:

Assay type:
Immunohistochemistry

Primary antibody type:
Rabbit Polyclonal

Secondary antibody type:
Polymer-HRP-Goat anti-Rabbit

Kit Component

Component	Size	Concentration
Antigen Retrieval Buffer	100 mL	50×
Washing Buffer	100 mL ×2	20×
Blocking Buffer	5 mL	RTU
Primary Antibody	5 mL	RTU
Secondary Antibody	5 mL	RTU
Chromogen Component A	0.2 mL	RTU
Chromogen Component B	4 mL	RTU
Signal Enhancer	5 mL	RTU
Counter Staining Reagent	5 mL	RTU
Mounting Media	5 mL	RTU
Control Slide	1 slide (Optional)	FFPE
Datasheet	1 Copy	
Manual	1 Copy	

Storage Instructions

All the reagents are stored at 2-8°C. The kit is stable for 6 months from the date of receipt.

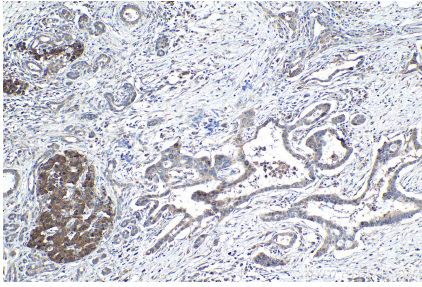
Background

Circadian locomoter output cycles protein kaput (CLOCK), also named as BHLHE8 or KIAA0334, is a 846 amino acid protein, which contains one bHLH domain, one PAC domain, and two PAS domains. CLOCK localizes in the nucleus and cytoplasm. CLOCK is expressed in all tissues examined including spleen, thymus, prostate, testis, ovary, small intestine, colon, leukocytes, heart, brain, placenta, lung, liver, skeletal muscle, kidney and pancreas. ARNTL/2-CLOCK heterodimers activate E-box element (5'-CACGTG-3') transcription of a number of proteins of the circadian clock, such as PER1 and PER2.

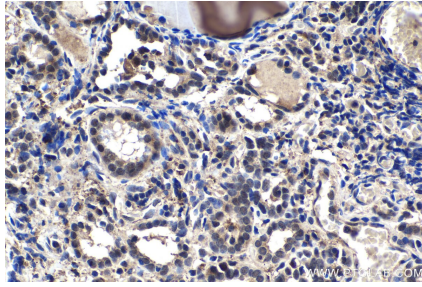
Synonyms

bHLHe8, CLOCK, clock homolog (mouse), hCLOCK, KAT13D, KIAA0334

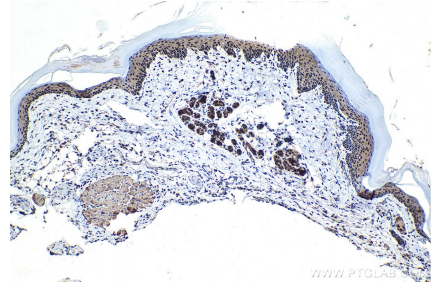
Selected Validation Data



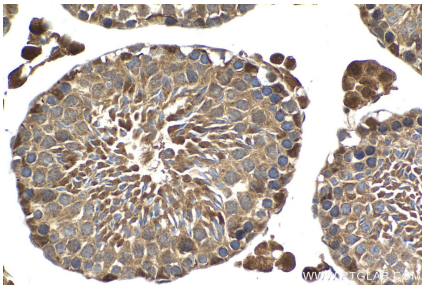
Immunohistochemical analysis of paraffin-embedded human pancreas cancer tissue slide using KHC1447 (CLOCK IHC Kit).



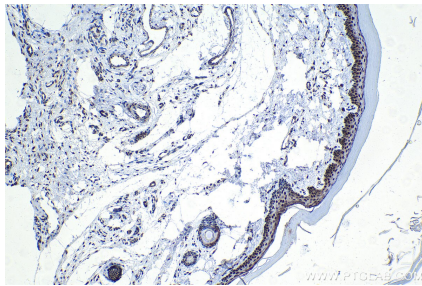
Immunohistochemical analysis of paraffin-embedded human thyroid cancer tissue slide using KHC1447 (CLOCK IHC Kit).



Immunohistochemical analysis of paraffin-embedded mouse skin tissue slide using KHC1447 (CLOCK IHC Kit).



Immunohistochemical analysis of paraffin-embedded mouse testis tissue slide using KHC1447 (CLOCK IHC Kit).



Immunohistochemical analysis of paraffin-embedded rat skin tissue slide using KHC1447 (CLOCK IHC Kit).