

IHC*easy* PDPK1 Ready-To-Use IHC Kit

Catalog Number: **KHC1448**

General Information

Sample type:
FFPE tissue

Cited sample type:

Reactivity:
Human, Mouse, Rat

Cited Reactivity:

Assay type:
Immunohistochemistry

Primary antibody type:
Rabbit Polyclonal

Secondary antibody type:
Polymer-HRP-Goat anti-Rabbit

Kit Component

Component	Size	Concentration
Antigen Retrieval Buffer	100 mL	50×
Washing Buffer	100 mL ×2	20×
Blocking Buffer	5 mL	RTU
Primary Antibody	5 mL	RTU
Secondary Antibody	5 mL	RTU
Chromogen Component A	0.2 mL	RTU
Chromogen Component B	4 mL	RTU
Signal Enhancer	5 mL	RTU
Counter Staining Reagent	5 mL	RTU
Mounting Media	5 mL	RTU
Control Slide	1 slide (Optional)	FFPE
Datasheet	1 Copy	
Manual	1 Copy	

Storage Instructions

All the reagents are stored at 2-8°C. The kit is stable for 6 months from the date of receipt.

Background

3-Phosphoinositide dependent protein kinase-1 (PDK1 or PDPK1) is a serine-threonine kinase belonging to AGC kinase family. PDK1 plays a critical role in establishing ACD (Asymmetric cell division) in the epithelium. The kinase activity of PDK1 depends on phosphatidylinositol 3-kinase (PI3K), a key intermediate in signaling pathways including those from growth factor receptors and adhesion molecules. Substrates of PDK1, including AKT and the protein kinase C (PKC) isozymes, regulate a number of essential cell functions.

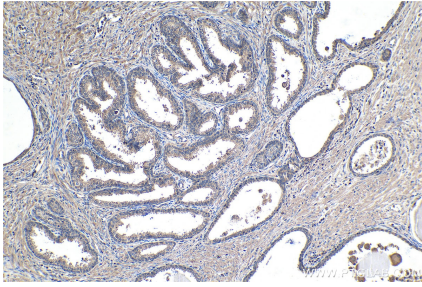
Synonyms

hPDK1, PDK1, PDPK1, PRO0461

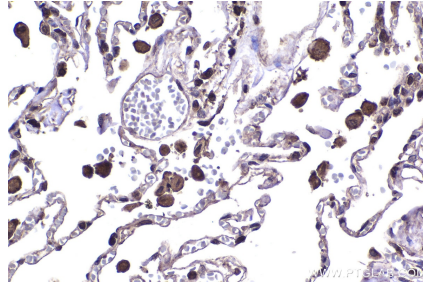
For technical support and original validation data for this product please contact:
T: 1 (888) 4PTGLAB (1-888-478-4522) (toll free in USA), or 1(312) 455-8498 (outside USA)
E: proteintech@ptglab.com
W: ptglab.com

This product is exclusively available under Proteintech Group brand and is not available to purchase from any other manufacturer.

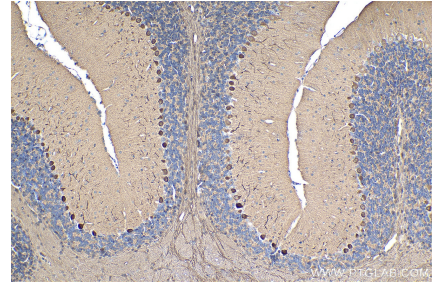
Selected Validation Data



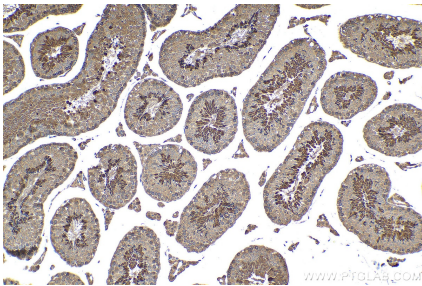
Immunohistochemical analysis of paraffin-embedded human prostate cancer tissue slide using KHC1448 (PDPK1 IHC Kit).



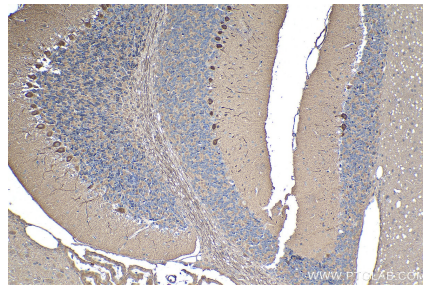
Immunohistochemical analysis of paraffin-embedded human lung tissue slide using KHC1448 (PDPK1 IHC Kit).



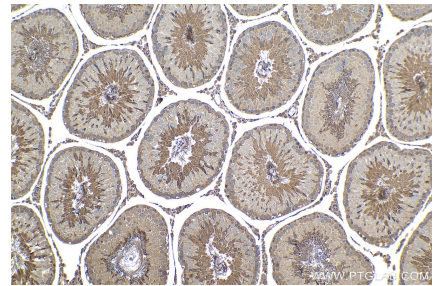
Immunohistochemical analysis of paraffin-embedded mouse cerebellum tissue slide using KHC1448 (PDPK1 IHC Kit).



Immunohistochemical analysis of paraffin-embedded mouse testis tissue slide using KHC1448 (PDPK1 IHC Kit).



Immunohistochemical analysis of paraffin-embedded rat cerebellum tissue slide using KHC1448 (PDPK1 IHC Kit).



Immunohistochemical analysis of paraffin-embedded rat testis tissue slide using KHC1448 (PDPK1 IHC Kit).