

IHC*easy* FOX2/RBM9 Ready-To-Use IHC Kit

Catalog Number: **KHC1451**

General Information

Sample type:
FFPE tissue

Cited sample type:

Reactivity:
Human, Mouse, Rat

Cited Reactivity:

Assay type:
Immunohistochemistry

Primary antibody type:
Mouse Monoclonal

Secondary antibody type:
Polymer-HRP-Goat anti-Mouse

Kit Component

Component	Size	Concentration
Antigen Retrieval Buffer	100 mL	50×
Washing Buffer	100 mL ×2	20×
Blocking Buffer	5 mL	RTU
Primary Antibody	5 mL	RTU
Secondary Antibody	5 mL	RTU
Chromogen Component A	0.2 mL	RTU
Chromogen Component B	4 mL	RTU
Signal Enhancer	5 mL	RTU
Counter Staining Reagent	5 mL	RTU
Mounting Media	5 mL	RTU
Control Slide	1 slide (Optional)	FFPE
Datasheet	1 Copy	
Manual	1 Copy	

Storage Instructions

All the reagents are stored at 2-8°C. The kit is stable for 6 months from the date of receipt.

Background

RBM9, also named as RBFOX2 and FOX2, is a RNA-binding protein that regulates alternative splicing events by binding to 5'-UGCAUGU-3' elements. There are several isoforms of RBM9 produced by variable use of multiple alternatively spliced internal exons and alternative splice sites. RBM9 may play an important role in tissue specific alternative splicing regulation.

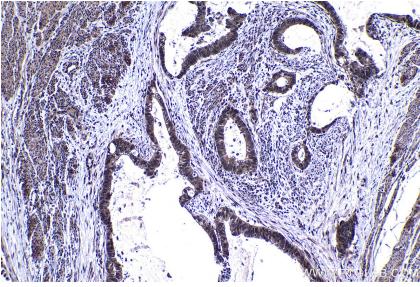
Synonyms

dJ106120.3, Fox 1 homolog B, Fox 2, FOX2, FOX2/RBM9, fxh, HNRBP2, HRNBP2, RBFOX2, RBM9, RNA binding motif protein 9, RNA binding protein 9, RTA

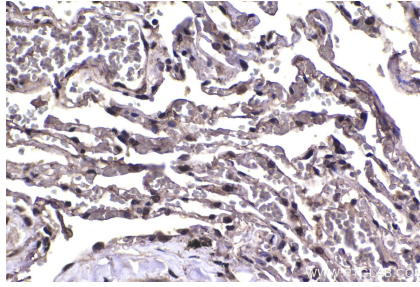
For technical support and original validation data for this product please contact:
T: 1 (888) 4PTGLAB (1-888-478-4522) (toll free in USA), or 1(312) 455-8498 (outside USA)
E: proteintech@ptglab.com
W: ptglab.com

This product is exclusively available under Proteintech Group brand and is not available to purchase from any other manufacturer.

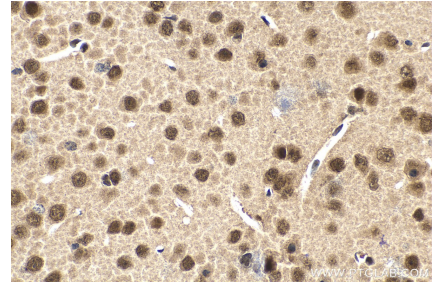
Selected Validation Data



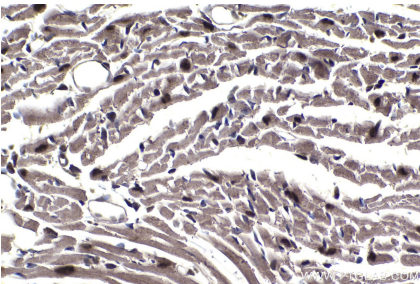
Immunohistochemical analysis of paraffin-embedded human urothelial carcinoma tissue slide using KHC1451 (FOX2/RBM9 IHC Kit).



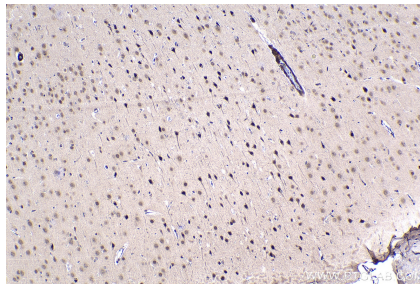
Immunohistochemical analysis of paraffin-embedded human lung tissue slide using KHC1451 (FOX2/RBM9 IHC Kit).



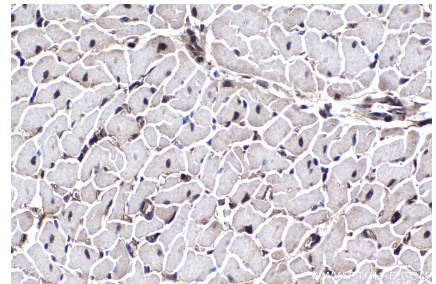
Immunohistochemical analysis of paraffin-embedded mouse brain tissue slide using KHC1451 (FOX2/RBM9 IHC Kit).



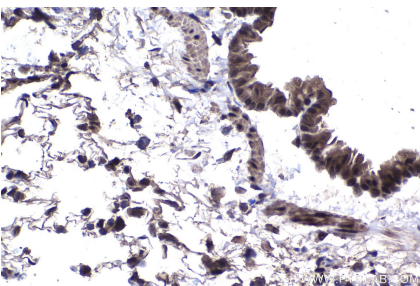
Immunohistochemical analysis of paraffin-embedded mouse heart tissue slide using KHC1451 (FOX2/RBM9 IHC Kit).



Immunohistochemical analysis of paraffin-embedded rat brain tissue slide using KHC1451 (FOX2/RBM9 IHC Kit).



Immunohistochemical analysis of paraffin-embedded rat heart tissue slide using KHC1451 (FOX2/RBM9 IHC Kit).



Immunohistochemical analysis of paraffin-embedded rat lung tissue slide using KHC1451 (FOX2/RBM9 IHC Kit).