

IHC*easy* SOX15 Ready-To-Use IHC Kit

Catalog Number: **KHC1461**

General Information

Sample type:
FFPE tissue
Cited sample type:
Reactivity:
Human
Cited Reactivity:

Assay type:
Immunohistochemistry
Primary antibody type:
Rabbit Polyclonal
Secondary antibody type:
Polymer-HRP-Goat anti-Rabbit

Kit Component

Component	Size	Concentration
Antigen Retrieval Buffer	100 mL	50×
Washing Buffer	100 mL ×2	20×
Blocking Buffer	5 mL	RTU
Primary Antibody	5 mL	RTU
Secondary Antibody	5 mL	RTU
Chromogen Component A	0.2 mL	RTU
Chromogen Component B	4 mL	RTU
Signal Enhancer	5 mL	RTU
Counter Staining Reagent	5 mL	RTU
Mounting Media	5 mL	RTU
Control Slide	1 slide (Optional)	FFPE
Datasheet	1 Copy	
Manual	1 Copy	

Storage Instructions

All the reagents are stored at 2-8°C. The kit is stable for 6 months from the date of receipt.

Background

SOX15, also named as SOX12, SOX20, is a 223 amino acid protein, which contains one HMG box DNA-binding domain. SOX15 is widely expressed in fetal and adult tissues and highest level is found in fetal spinal cord and adult brain and testis. SOX15 is a candidate tumor suppressor in pancreatic cancer with a potential role in Wnt/ β -catenin signaling. Sox15 is required for skeletal muscle regeneration and is up regulated in the embryonic mouse testis.

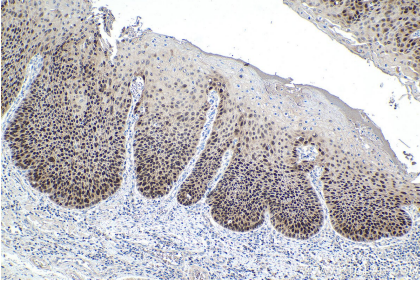
Synonyms

Protein SOX 12, Protein SOX 15, Protein SOX 20, SOX12, SOX15, SOX20, SOX26, SOX27

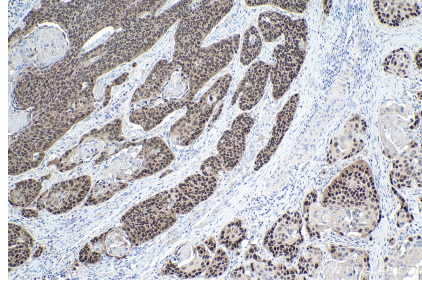
For technical support and original validation data for this product please contact:
T: 1 (888) 4PTGLAB (1-888-478-4522) (toll free in USA), or 1(312) 455-8498 (outside USA)
E: proteintech@ptglab.com
W: ptglab.com

This product is exclusively available under Proteintech Group brand and is not available to purchase from any other manufacturer.

Selected Validation Data



Immunohistochemical analysis of paraffin-embedded human oesophagus cancer tissue slide using KHC1461 (SOX15 IHC Kit).



Immunohistochemical analysis of paraffin-embedded human oesophagus cancer tissue slide using KHC1461 (SOX15 IHC Kit).