

IHC*easy* ACTL6B Ready-To-Use IHC Kit

Catalog Number: **KHC1482**

General Information

Sample type:
FFPE tissue

Cited sample type:

Reactivity:
Human, Mouse, Rat

Cited Reactivity:

Assay type:
Immunohistochemistry

Primary antibody type:
Rabbit Polyclonal

Secondary antibody type:
Polymer-HRP-Goat anti-Rabbit

Kit Component

Component	Size	Concentration
Antigen Retrieval Buffer	100 mL	50×
Washing Buffer	100 mL ×2	20×
Blocking Buffer	5 mL	RTU
Primary Antibody	5 mL	RTU
Secondary Antibody	5 mL	RTU
Chromogen Component A	0.2 mL	RTU
Chromogen Component B	4 mL	RTU
Signal Enhancer	5 mL	RTU
Counter Staining Reagent	5 mL	RTU
Mounting Media	5 mL	RTU
Control Slide	1 slide (Optional)	FFPE
Datasheet	1 Copy	
Manual	1 Copy	

Storage Instructions

All the reagents are stored at 2-8°C. The kit is stable for 6 months from the date of receipt.

Background

BAF53B, also named as ACTL6B, encoded by this gene is a member of a family of actin-related proteins (ARPs) which share significant amino acid sequence identity to conventional actins. Both actins and ARPs have an actin fold, which is an ATP-binding cleft, as a common feature. The ARPs are involved in diverse cellular processes, including vesicular transport, spindle orientation, nuclear migration and chromatin remodeling. BAF53b is unique among nucleosome remodeling complex subunits because it is neuron specific and is not found in any other nucleosome remodeling complex besides the nBAF complex.

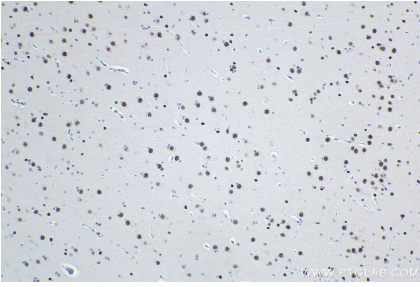
Synonyms

actin like 6B, Actin like protein 6B, Actin related protein Baf53b, ACTL6, ACTL6B, ArpNalpha, BAF53B, BRG1 associated factor 53B

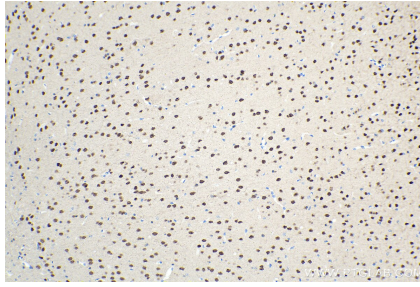
For technical support and original validation data for this product please contact:
T: 1 (888) 4PTGLAB (1-888-478-4522) (toll free in USA), or 1(312) 455-8498 (outside USA)
E: proteintech@ptglab.com
W: ptglab.com

This product is exclusively available under Proteintech Group brand and is not available to purchase from any other manufacturer.

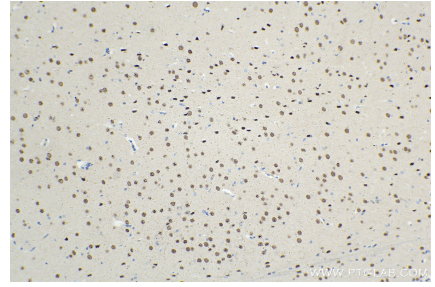
Selected Validation Data



Immunohistochemical analysis of paraffin-embedded human gliomas tissue slide using KHC1482 (ACTL6B IHC Kit).



Immunohistochemical analysis of paraffin-embedded mouse brain tissue slide using KHC1482 (ACTL6B IHC Kit).



Immunohistochemical analysis of paraffin-embedded rat brain tissue slide using KHC1482 (ACTL6B IHC Kit).