

# IHC*easy* SUPT7L Ready-To-Use IHC Kit

Catalog Number: **KHC1485**

## General Information

**Sample type:**  
FFPE tissue

**Cited sample type:**

**Reactivity:**  
Human, Mouse, Rat

**Cited Reactivity:**

**Assay type:**  
Immunohistochemistry

**Primary antibody type:**  
Rabbit Polyclonal

**Secondary antibody type:**  
Polymer-HRP-Goat anti-Rabbit

## Kit Component

Component	Size	Concentration
Antigen Retrieval Buffer	100 mL	50×
Washing Buffer	100 mL ×2	20×
Blocking Buffer	5 mL	RTU
Primary Antibody	5 mL	RTU
Secondary Antibody	5 mL	RTU
Chromogen Component A	0.2 mL	RTU
Chromogen Component B	4 mL	RTU
Signal Enhancer	5 mL	RTU
Counter Staining Reagent	5 mL	RTU
Mounting Media	5 mL	RTU
Control Slide	1 slide (Optional)	FFPE
Datasheet	1 Copy	
Manual	1 Copy	

## Storage Instructions

All the reagents are stored at 2-8°C. The kit is stable for 6 months from the date of receipt.

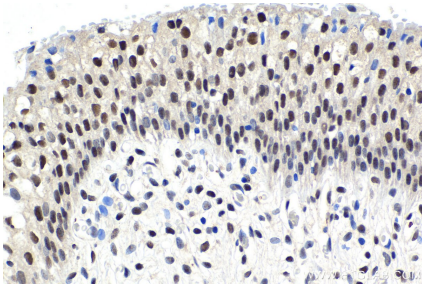
## Background

SUPT7L, also named as KIAA0764, STAF65gamma, is a component of the STAGA transcription coactivator-HAT complex.

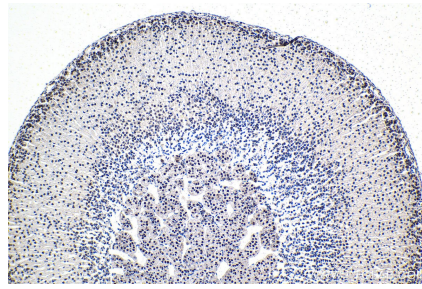
## Synonyms

Adenocarcinoma antigen ART1, ART1, KIAA0764, SPT7L, STAF65, STAF65(gamma), STAF65gamma, STAGA complex 65 subunit gamma, Suppressor of Ty 7 like, SUPT7L

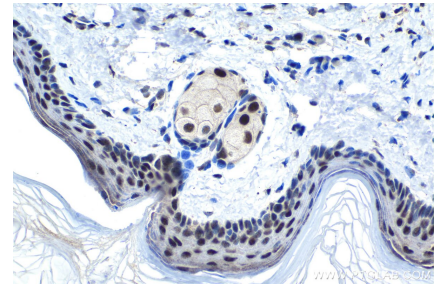
## Selected Validation Data



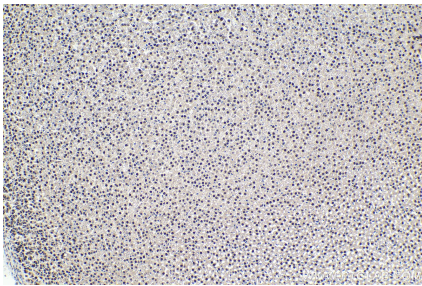
Immunohistochemical analysis of paraffin-embedded human urothelial carcinoma tissue slide using KHC1485 (SUPT7L IHC Kit).



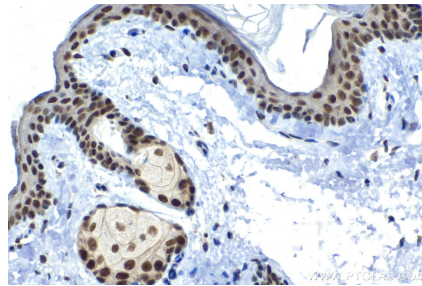
Immunohistochemical analysis of paraffin-embedded mouse adrenal gland tissue slide using KHC1485 (SUPT7L IHC Kit).



Immunohistochemical analysis of paraffin-embedded mouse skin tissue slide using KHC1485 (SUPT7L IHC Kit).



Immunohistochemical analysis of paraffin-embedded rat adrenal gland tissue slide using KHC1485 (SUPT7L IHC Kit).



Immunohistochemical analysis of paraffin-embedded rat skin tissue slide using KHC1485 (SUPT7L IHC Kit).