

# IHC*easy* CTSL1 Ready-To-Use IHC Kit

Catalog Number: **KHC1512**

## General Information

**Sample type:**  
FFPE tissue

**Cited sample type:**

**Reactivity:**  
Human, Mouse, Rat

**Cited Reactivity:**

**Assay type:**  
Immunohistochemistry

**Primary antibody type:**  
Mouse Monoclonal

**Secondary antibody type:**  
Polymer-HRP-Goat anti-Mouse

## Kit Component

Component	Size	Concentration
Antigen Retrieval Buffer	100 mL	50×
Washing Buffer	100 mL ×2	20×
Blocking Buffer	5 mL	RTU
Primary Antibody	5 mL	RTU
Secondary Antibody	5 mL	RTU
Chromogen Component A	0.2 mL	RTU
Chromogen Component B	4 mL	RTU
Signal Enhancer	5 mL	RTU
Counter Staining Reagent	5 mL	RTU
Mounting Media	5 mL	RTU
Control Slide	1 slide (Optional)	FFPE
Datasheet	1 Copy	
Manual	1 Copy	

## Storage Instructions

All the reagents are stored at 2-8°C. The kit is stable for 6 months from the date of receipt.

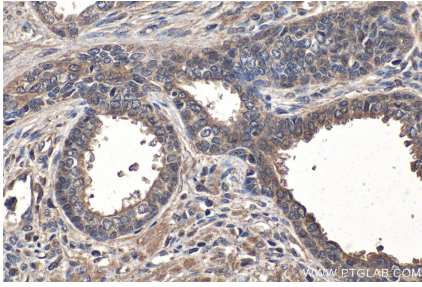
## Background

CTSL1 (Cathepsin L1) is also named as CTSL and MEP, belongs to the peptidase C1 family. It is a lysosomal proteinase whose expression is also up-regulated in the skeletal muscle during starvation. It plays an intracellular role in normal intestinal epithelial polarization and initiation of neoplasia. CTSL1 also improves cardiac function and inhibits cardiac hypertrophy, inflammation, and fibrosis through blocking AKT/GSK3B signaling.

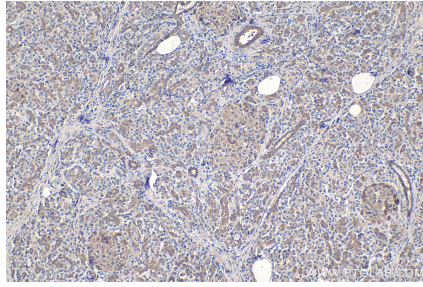
## Synonyms

Cathepsin L, cathepsin L1, CATL, CTSL, CTSL1, FLJ31037, Major excreted protein, MEP

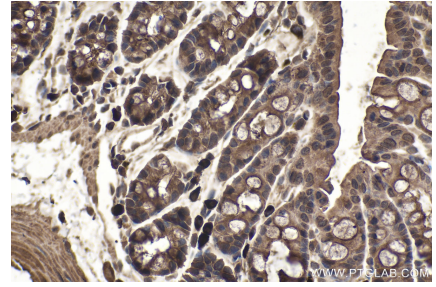
## Selected Validation Data



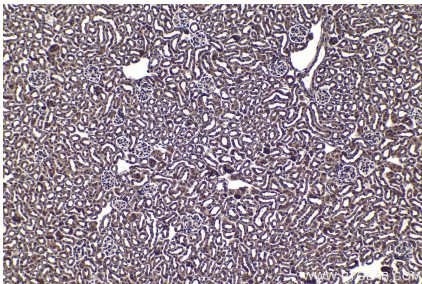
Immunohistochemical analysis of paraffin-embedded human prostate cancer tissue slide using KHC1512 (CTSL1 IHC Kit).



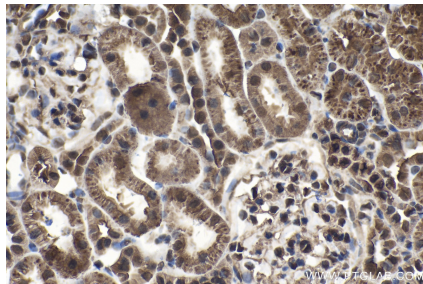
Immunohistochemical analysis of paraffin-embedded human pancreas cancer tissue slide using KHC1512 (CTSL1 IHC Kit).



Immunohistochemical analysis of paraffin-embedded mouse colon tissue slide using KHC1512 (CTSL1 IHC Kit).



Immunohistochemical analysis of paraffin-embedded mouse kidney tissue slide using KHC1512 (CTSL1 IHC Kit).



Immunohistochemical analysis of paraffin-embedded rat kidney tissue slide using KHC1512 (CTSL1 IHC Kit).