

IHC*easy* RARB Ready-To-Use IHC Kit

Catalog Number: **KHC1522**

General Information

Sample type:
FFPE tissue
Cited sample type:
Reactivity:
Human, Mouse, Rat
Cited Reactivity:

Assay type:
Immunohistochemistry
Primary antibody type:
Rabbit Polyclonal
Secondary antibody type:
Polymer-HRP-Goat anti-Rabbit

Kit Component

Component	Size	Concentration
Antigen Retrieval Buffer	100 mL	50×
Washing Buffer	100 mL ×2	20×
Blocking Buffer	5 mL	RTU
Primary Antibody	5 mL	RTU
Secondary Antibody	5 mL	RTU
Chromogen Component A	0.2 mL	RTU
Chromogen Component B	4 mL	RTU
Signal Enhancer	5 mL	RTU
Counter Staining Reagent	5 mL	RTU
Mounting Media	5 mL	RTU
Control Slide	1 slide (Optional)	FFPE
Datasheet	1 Copy	
Manual	1 Copy	

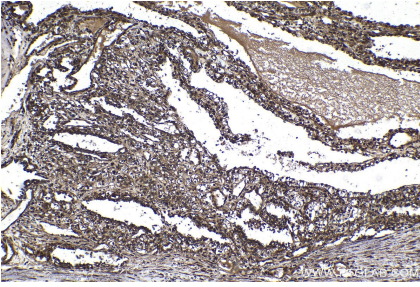
Storage Instructions

All the reagents are stored at 2-8°C. The kit is stable for 6 months from the date of receipt.

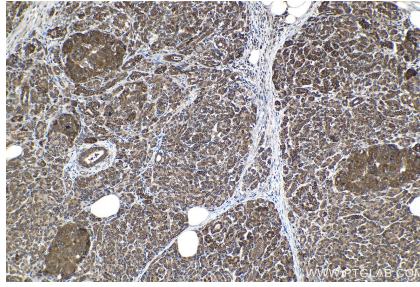
Synonyms

HAP, HBV activated protein, NR1B2, RAR beta, RAR epsilon, RARB, Retinoic acid receptor beta, retinoic acid receptor, beta, RRB2

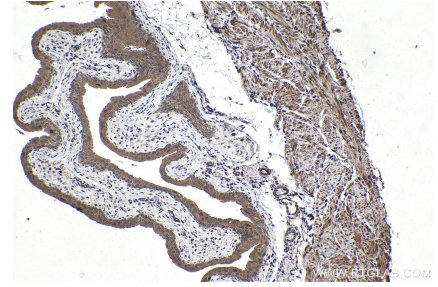
Selected Validation Data



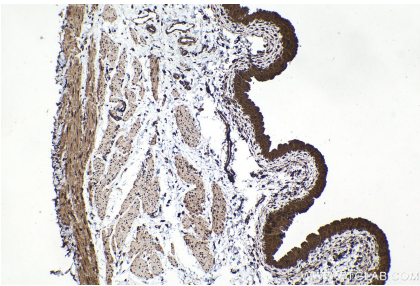
Immunohistochemical analysis of paraffin-embedded human renal cell carcinoma tissue slide using KHC1522 (RARB IHC Kit).



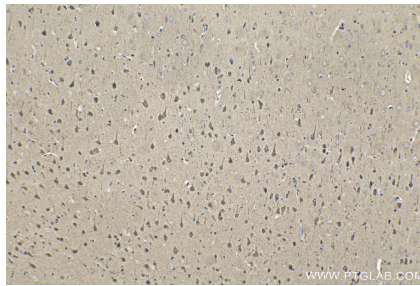
Immunohistochemical analysis of paraffin-embedded human pancreas cancer tissue slide using KHC1522 (RARB IHC Kit).



Immunohistochemical analysis of paraffin-embedded mouse bladder tissue slide using KHC1522 (RARB IHC Kit).



Immunohistochemical analysis of paraffin-embedded rat bladder tissue slide using KHC1522 (RARB IHC Kit).



Immunohistochemical analysis of paraffin-embedded rat brain tissue slide using KHC1522 (RARB IHC Kit).