

IHC*easy* XRCC6 Ready-To-Use IHC Kit

Catalog Number: **KHC1527**

General Information

Sample type:
FFPE tissue

Cited sample type:

Reactivity:
Human

Cited Reactivity:

Assay type:
Immunohistochemistry

Primary antibody type:
Mouse Monoclonal

Secondary antibody type:
Polymer-HRP-Goat anti-Mouse

Kit Component

Component	Size	Concentration
Antigen Retrieval Buffer	100 mL	50×
Washing Buffer	100 mL ×2	20×
Blocking Buffer	5 mL	RTU
Primary Antibody	5 mL	RTU
Secondary Antibody	5 mL	RTU
Chromogen Component A	0.2 mL	RTU
Chromogen Component B	4 mL	RTU
Signal Enhancer	5 mL	RTU
Counter Staining Reagent	5 mL	RTU
Mounting Media	5 mL	RTU
Control Slide	1 slide (Optional)	FFPE
Datasheet	1 Copy	
Manual	1 Copy	

Storage Instructions

All the reagents are stored at 2-8°C. The kit is stable for 6 months from the date of receipt.

Background

X-ray repair cross-complementing protein 6(XRCC6)gene encodes subunit p70 of the p70/p80 autoantigen which has a role in DNA repair or transposition. DNA helicase II complex binds preferentially to fork-like ends of double-stranded DNA in a cell cycle-dependent manner, which may be mediated by XRCC6. XRCC6/5 can form a heterodimer, which function as a regulatory subunit of the DNA-dependent protein kinase complex DNA-PK by increasing the affinity of the catalytic subunit PRKDC to DNA, and also it can stabilize broken DNA ends and bringing them together. Otherwise, XRCC5/6 heterodimer together with APEX1 can negatively regulate of transcription.

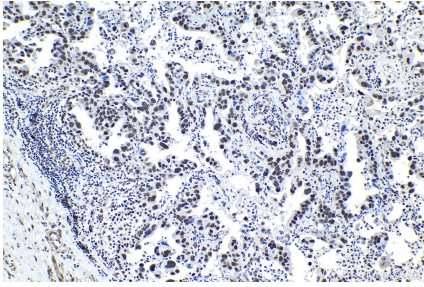
Synonyms

5 dRP lyase Ku70, 70 kDa subunit of Ku antigen, CTC75, CTCBF, DNA repair protein XRCC6, G22P1, KU70, KU70,XRCC6, ML8, Thyroid lupus autoantigen, TLAA, XRCC6

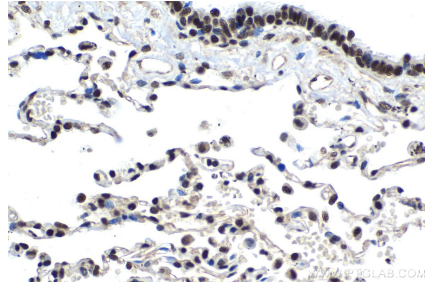
For technical support and original validation data for this product please contact:
T: 1 (888) 4PTGLAB (1-888-478-4522) (toll free in USA), or 1(312) 455-8498 (outside USA)
E: proteintech@ptglab.com
W: ptglab.com

This product is exclusively available under Proteintech Group brand and is not available to purchase from any other manufacturer.

Selected Validation Data



Immunohistochemical analysis of paraffin-embedded human lung cancer tissue slide using KHC1527 (XRCC6 IHC Kit).



Immunohistochemical analysis of paraffin-embedded human lung tissue slide using KHC1527 (XRCC6 IHC Kit).