

# IHC*easy* ETS1 Ready-To-Use IHC Kit

Catalog Number: **KHC1533**

## General Information

**Sample type:**  
FFPE tissue

**Cited sample type:**

**Reactivity:**  
Human, Mouse, Rat

**Cited Reactivity:**

**Assay type:**  
Immunohistochemistry

**Primary antibody type:**  
Rabbit Polyclonal

**Secondary antibody type:**  
Polymer-HRP-Goat anti-Rabbit

## Kit Component

| Component                | Size               | Concentration |
|--------------------------|--------------------|---------------|
| Antigen Retrieval Buffer | 100 mL             | 50×           |
| Washing Buffer           | 100 mL ×2          | 20×           |
| Blocking Buffer          | 5 mL               | RTU           |
| Primary Antibody         | 5 mL               | RTU           |
| Secondary Antibody       | 5 mL               | RTU           |
| Chromogen Component A    | 0.2 mL             | RTU           |
| Chromogen Component B    | 4 mL               | RTU           |
| Signal Enhancer          | 5 mL               | RTU           |
| Counter Staining Reagent | 5 mL               | RTU           |
| Mounting Media           | 5 mL               | RTU           |
| Control Slide            | 1 slide (Optional) | FFPE          |
| Datasheet                | 1 Copy             |               |
| Manual                   | 1 Copy             |               |

## Storage Instructions

All the reagents are stored at 2-8°C. The kit is stable for 6 months from the date of receipt.

## Background

ETS1 is a member of the ETS family of transcription factors, which are defined by the presence of a conserved ETS DNA-binding domain that recognizes the core consensus DNA sequence GGAA/T in target genes. ETS1 is a nuclear protein and primarily acts as a transcriptional activator, though it can also repress gene transcription. Since it is primarily expressed in lymphocytes, it plays several critical roles in immunity. In addition, it is important for angiogenesis. Since cells express several Ets proteins at the same time, functional redundancy is possible. This is particularly shown for the so-called housekeeping genes where several Ets factors were found to occupy the proximal promoters in vivo.

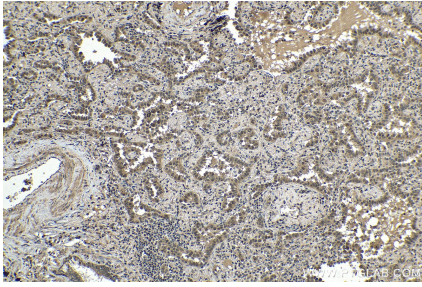
## Synonyms

ETS 1, ETS1, EWSR2, p54, Protein C ets 1

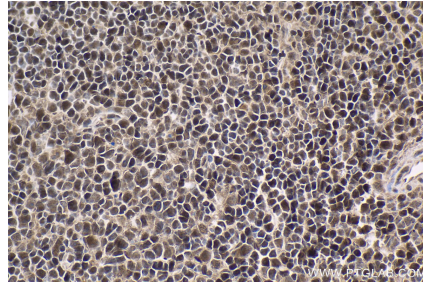
For technical support and original validation data for this product please contact:  
T: 1 (888) 4PTGLAB (1-888-478-4522) (toll free in USA), or 1(312) 455-8498 (outside USA) E: [proteintech@ptglab.com](mailto:proteintech@ptglab.com) W: [ptglab.com](http://ptglab.com)

This product is exclusively available under Proteintech Group brand and is not available to purchase from any other manufacturer.

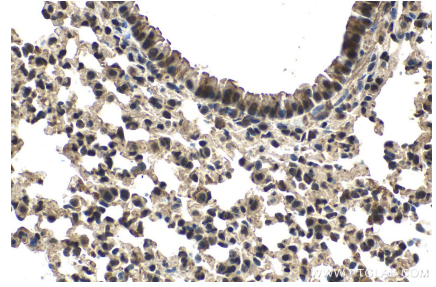
## Selected Validation Data



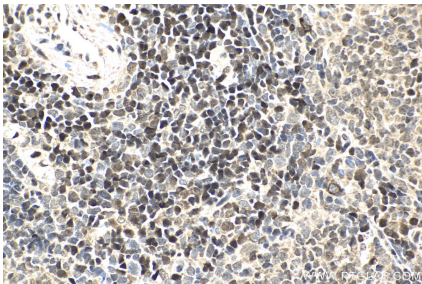
Immunohistochemical analysis of paraffin-embedded human lung cancer tissue slide using KHC1533 (ETS1 IHC Kit).



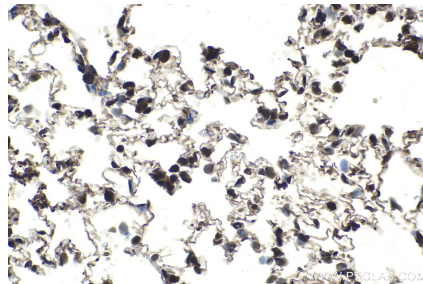
Immunohistochemical analysis of paraffin-embedded mouse spleen tissue slide using KHC1533 (ETS1 IHC Kit).



Immunohistochemical analysis of paraffin-embedded mouse lung tissue slide using KHC1533 (ETS1 IHC Kit).



Immunohistochemical analysis of paraffin-embedded rat spleen tissue slide using KHC1533 (ETS1 IHC Kit).



Immunohistochemical analysis of paraffin-embedded rat lung tissue slide using KHC1533 (ETS1 IHC Kit).