

# IHC*easy* PSMC3 Ready-To-Use IHC Kit

Catalog Number: **KHC1541**

## General Information

Sample type:  
FFPE tissue  
Cited sample type:  
Reactivity:  
Human, Mouse  
Cited Reactivity:

Assay type:  
Immunohistochemistry  
Primary antibody type:  
Rabbit Polyclonal  
Secondary antibody type:  
Polymer-HRP-Goat anti-Rabbit

## Kit Component

Component	Size	Concentration
Antigen Retrieval Buffer	100 mL	50×
Washing Buffer	100 mL ×2	20×
Blocking Buffer	5 mL	RTU
Primary Antibody	5 mL	RTU
Secondary Antibody	5 mL	RTU
Chromogen Component A	0.2 mL	RTU
Chromogen Component B	4 mL	RTU
Signal Enhancer	5 mL	RTU
Counter Staining Reagent	5 mL	RTU
Mounting Media	5 mL	RTU
Control Slide	1 slide (Optional)	FFPE
Datasheet	1 Copy	
Manual	1 Copy	

## Storage Instructions

All the reagents are stored at 2-8°C. The kit is stable for 6 months from the date of receipt.

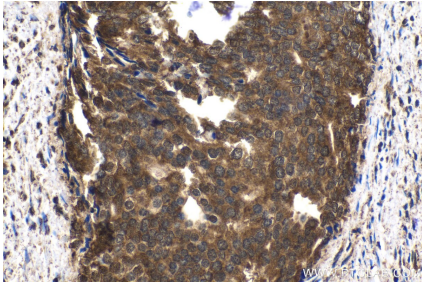
## Background

PSMC3(26S protease regulatory subunit 6A) is also named as TBP1, Proteasome 26S subunit ATPase 3 and belongs to the AAA ATPase family. The 26S protease is involved in the ATP-dependent degradation of ubiquitinated proteins. It is a multifunctional protein, component of the regulatory subunit of the proteasome, involved in different cellular processes.

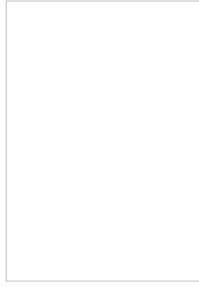
## Synonyms

Proteasome subunit P50, PSMC3, Tat binding protein 1, TBP 1, TBP1

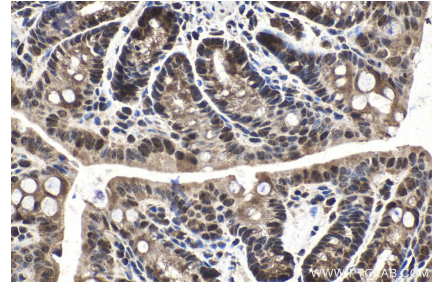
## Selected Validation Data



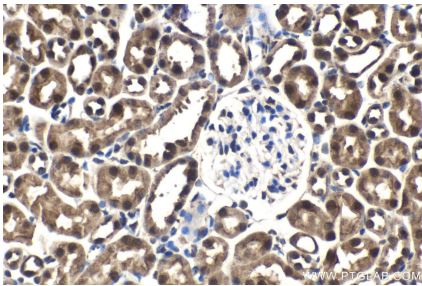
Immunohistochemical analysis of paraffin-embedded human prostate cancer tissue slide using KHC1541 (PSMC3 IHC Kit).



Immunohistochemical analysis of paraffin-embedded mouse brain tissue slide using KHC1541 (PSMC3 IHC Kit).



Immunohistochemical analysis of paraffin-embedded mouse colon tissue slide using KHC1541 (PSMC3 IHC Kit).



Immunohistochemical analysis of paraffin-embedded mouse kidney tissue slide using KHC1541 (PSMC3 IHC Kit).