

IHC*easy* POU3F2/BRN2 Ready-To-Use IHC Kit

Catalog Number: **KHC1549**

General Information

Sample type:
FFPE tissue

Cited sample type:

Reactivity:
Human, Mouse, Rat

Cited Reactivity:

Assay type:
Immunohistochemistry

Primary antibody type:
Rabbit Polyclonal

Secondary antibody type:
Polymer-HRP-Goat anti-Rabbit

Kit Component

Component	Size	Concentration
Antigen Retrieval Buffer	100 mL	50×
Washing Buffer	100 mL ×2	20×
Blocking Buffer	5 mL	RTU
Primary Antibody	5 mL	RTU
Secondary Antibody	5 mL	RTU
Chromogen Component A	0.2 mL	RTU
Chromogen Component B	4 mL	RTU
Signal Enhancer	5 mL	RTU
Counter Staining Reagent	5 mL	RTU
Mounting Media	5 mL	RTU
Control Slide	1 slide (Optional)	FFPE
Datasheet	1 Copy	
Manual	1 Copy	

Storage Instructions

All the reagents are stored at 2-8°C. The kit is stable for 6 months from the date of receipt.

Background

POU3F2 belongs to a large family of transcription factors that bind to the octameric DNA sequence ATGCAAAT. It shares a highly homologous region that referred to as the POU domain. POU3F2 is a Class III POU genes that expressed predominantly in the central nervous system (CNS). It is likely that CNS-specific transcription factors such as these play an important role in mammalian neurogenesis by regulating their diverse patterns of gene expression. POU3F2 is required for maintaining neural cell differentiation and has a role in the production and positioning of neocortical neurons.

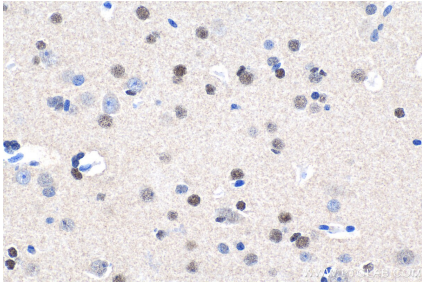
Synonyms

Brain 2, Brn 2, BRN2, Oct 7, OCT7, Octamer binding protein 7, OTF 7, OTF7, POU class 3 homeobox 2, POU3F2, POUF3

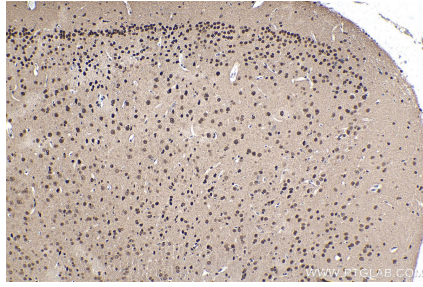
For technical support and original validation data for this product please contact:
T: 1 (888) 4PTGLAB (1-888-478-4522) (toll free in USA), or 1(312) 455-8498 (outside USA)
E: proteintech@ptglab.com
W: ptglab.com

This product is exclusively available under Proteintech Group brand and is not available to purchase from any other manufacturer.

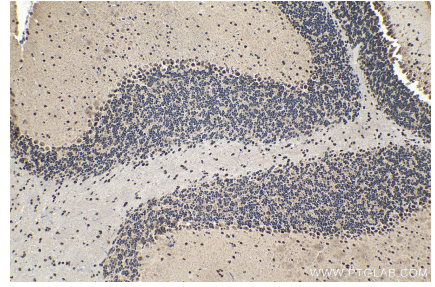
Selected Validation Data



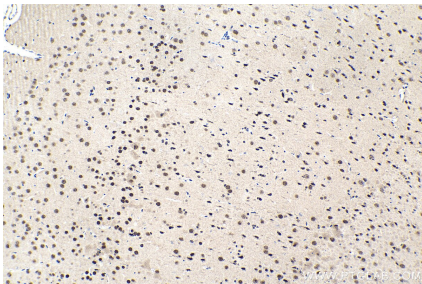
Immunohistochemical analysis of paraffin-embedded human gliomas tissue slide using KHC1549 (POU3F2/BRN2 IHC Kit).



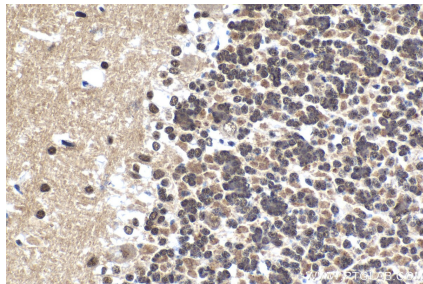
Immunohistochemical analysis of paraffin-embedded mouse brain tissue slide using KHC1549 (POU3F2/BRN2 IHC Kit).



Immunohistochemical analysis of paraffin-embedded mouse cerebellum tissue slide using KHC1549 (POU3F2/BRN2 IHC Kit).



Immunohistochemical analysis of paraffin-embedded rat brain tissue slide using KHC1549 (POU3F2/BRN2 IHC Kit).



Immunohistochemical analysis of paraffin-embedded rat cerebellum tissue slide using KHC1549 (POU3F2/BRN2 IHC Kit).