

IHC*easy* H2AX Ready-To-Use IHC Kit

Catalog Number: **KHC1551**

General Information

Sample type:
FFPE tissue

Cited sample type:

Reactivity:
Human, Mouse, Rat

Cited Reactivity:

Assay type:
Immunohistochemistry

Primary antibody type:
Rabbit Polyclonal

Secondary antibody type:
Polymer-HRP-Goat anti-Rabbit

Kit Component

Component	Size	Concentration
Antigen Retrieval Buffer	100 mL	50×
Washing Buffer	100 mL ×2	20×
Blocking Buffer	5 mL	RTU
Primary Antibody	5 mL	RTU
Secondary Antibody	5 mL	RTU
Chromogen Component A	0.2 mL	RTU
Chromogen Component B	4 mL	RTU
Signal Enhancer	5 mL	RTU
Counter Staining Reagent	5 mL	RTU
Mounting Media	5 mL	RTU
Control Slide	1 slide (Optional)	FFPE
Datasheet	1 Copy	
Manual	1 Copy	

Storage Instructions

All the reagents are stored at 2-8°C. The kit is stable for 6 months from the date of receipt.

Background

Histone H2A.X belongs to the histone H2A family, which is synthesized in G1 and S phase. It is involved in nucleosomal organization of chromatin together with other histone proteins, and is specially important for recombination between immunoglobulin switch regions. H2A.X becomes phosphorylated on serine 139 (to form gamma-H2AFX or H2AX139ph) in response to DNA double strand breaks (DSBs) generated by exogenous genotoxic agents and by stalled replication forks, which promotes DNA repair and maintains genomic stability.

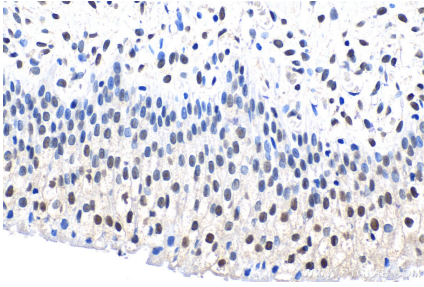
Synonyms

H2A histone family, member X, H2A.X, H2A/X, H2AFX, H2AX, histone, Histone H2A.x

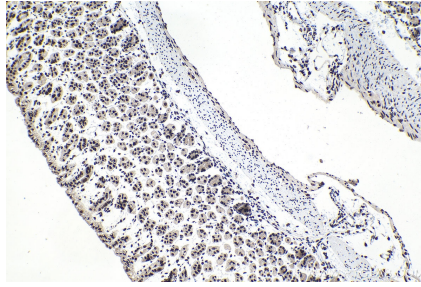
For technical support and original validation data for this product please contact:
T: 1 (888) 4PTGLAB (1-888-478-4522) (toll free in USA), or 1(312) 455-8498 (outside USA)
E: proteintech@ptglab.com
W: ptglab.com

This product is exclusively available under Proteintech Group brand and is not available to purchase from any other manufacturer.

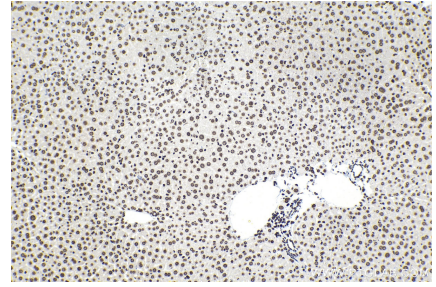
Selected Validation Data



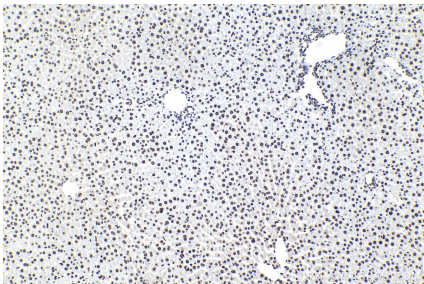
Immunohistochemical analysis of paraffin-embedded human urothelial carcinoma tissue slide using KHC1551 (H2AX IHC Kit).



Immunohistochemical analysis of paraffin-embedded mouse stomach tissue slide using KHC1551 (H2AX IHC Kit).



Immunohistochemical analysis of paraffin-embedded mouse liver tissue slide using KHC1551 (H2AX IHC Kit).



Immunohistochemical analysis of paraffin-embedded rat liver tissue slide using KHC1551 (H2AX IHC Kit).