

IHC*easy* USF1 Ready-To-Use IHC Kit

Catalog Number: **KHC1557**

General Information

Sample type:
FFPE tissue

Cited sample type:

Reactivity:
Human, Mouse, Rat

Cited Reactivity:

Assay type:
Immunohistochemistry

Primary antibody type:
Rabbit Polyclonal

Secondary antibody type:
Polymer-HRP-Goat anti-Rabbit

Kit Component

Component	Size	Concentration
Antigen Retrieval Buffer	100 mL	50×
Washing Buffer	100 mL ×2	20×
Blocking Buffer	5 mL	RTU
Primary Antibody	5 mL	RTU
Secondary Antibody	5 mL	RTU
Chromogen Component A	0.2 mL	RTU
Chromogen Component B	4 mL	RTU
Signal Enhancer	5 mL	RTU
Counter Staining Reagent	5 mL	RTU
Mounting Media	5 mL	RTU
Control Slide	1 slide (Optional)	FFPE
Datasheet	1 Copy	
Manual	1 Copy	

Storage Instructions

All the reagents are stored at 2-8°C. The kit is stable for 6 months from the date of receipt.

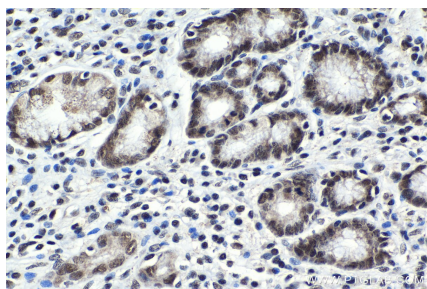
Background

Upstream stimulatory factor 1 (USF1), also name Class B basic helix-loop-helix protein 11. It is a major late transcription factor 1. USF1 is a member of the basic helix-loop-helix leucine zipper family, and can function as a cellular transcription factor. The encoded protein can activate transcription through pyrimidine-rich initiator (Inr) elements and E box motifs. USF1 has been linked to familial combined hyperlipidemia (FCHL).

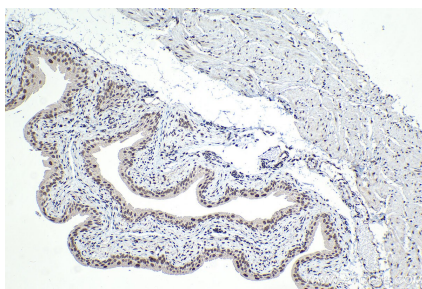
Synonyms

bHLHb11, FCHL, FCHL1, HYPLIP1, MLTF, MLTFI, UEF, Upstream stimulatory factor 1, USF, USF1

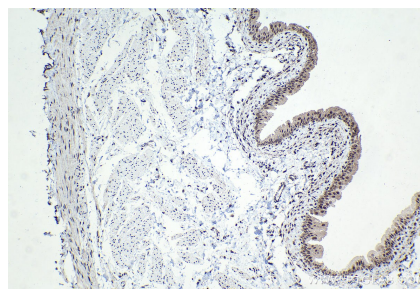
Selected Validation Data



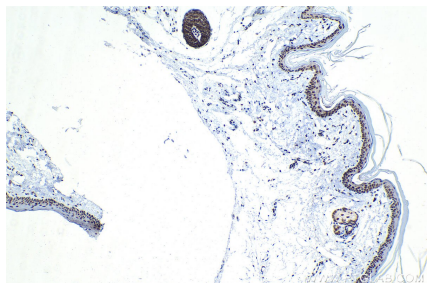
Immunohistochemical analysis of paraffin-embedded human stomach cancer tissue slide using KHC1557 (USF1 IHC Kit).



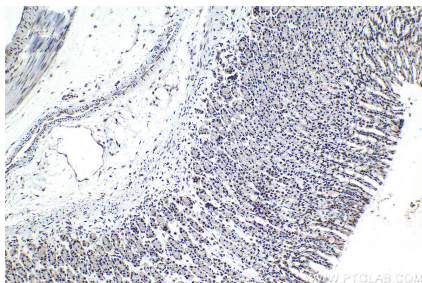
Immunohistochemical analysis of paraffin-embedded mouse bladder tissue slide using KHC1557 (USF1 IHC Kit).



Immunohistochemical analysis of paraffin-embedded rat bladder tissue slide using KHC1557 (USF1 IHC Kit).



Immunohistochemical analysis of paraffin-embedded rat skin tissue slide using KHC1557 (USF1 IHC Kit).



Immunohistochemical analysis of paraffin-embedded rat stomach tissue slide using KHC1557 (USF1 IHC Kit).