

IHC*easy* PAX6 Ready-To-Use IHC Kit

Catalog Number: **KHC1565**

General Information

Sample type:
FFPE tissue

Cited sample type:

Reactivity:
Human, Mouse, Rat

Cited Reactivity:

Assay type:
Immunohistochemistry

Primary antibody type:
Mouse Monoclonal

Secondary antibody type:
Polymer-HRP-Goat anti-Mouse

Kit Component

Component	Size	Concentration
Antigen Retrieval Buffer	100 mL	50×
Washing Buffer	100 mL ×2	20×
Blocking Buffer	5 mL	RTU
Primary Antibody	5 mL	RTU
Secondary Antibody	5 mL	RTU
Chromogen Component A	0.2 mL	RTU
Chromogen Component B	4 mL	RTU
Signal Enhancer	5 mL	RTU
Counter Staining Reagent	5 mL	RTU
Mounting Media	5 mL	RTU
Control Slide	1 slide (Optional)	FFPE
Datasheet	1 Copy	
Manual	1 Copy	

Storage Instructions

All the reagents are stored at 2-8°C. The kit is stable for 6 months from the date of receipt.

Background

PAX6, a paired domain and homeodomain-containing transcription factor. Interaction with TRIM11 leads to ubiquitination of PAX6 and its proteasomal degradation. PAX6 is one of the earliest genes expressed in the eye field and considered a master control gene for retinal and eye development. PAX6 also regulates the development of the olfactory, central nervous systems, pituitary, and pancreas. PAX6 mutations can cause complex ocular disorders such as aniridia and Peter's anomaly.

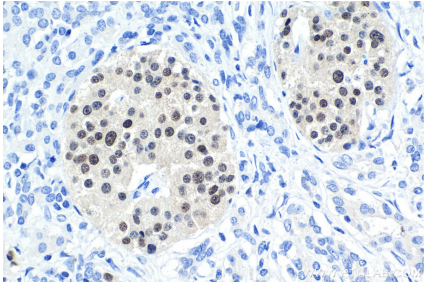
Synonyms

AN, AN2, Aniridia type II protein, D11S812E, MGDA, Oculorhombin, paired box 6, Paired box protein Pax 6, PAX6, WAGR

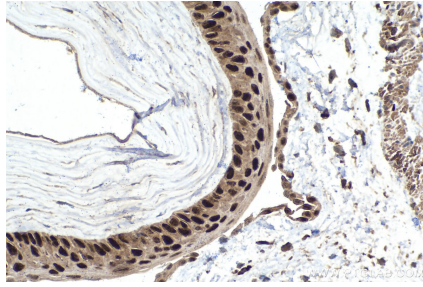
For technical support and original validation data for this product please contact:
T: 1 (888) 4PTGLAB (1-888-478-4522) (toll free in USA), or 1(312) 455-8498 (outside USA)
E: proteintech@ptglab.com
W: ptglab.com

This product is exclusively available under Proteintech Group brand and is not available to purchase from any other manufacturer.

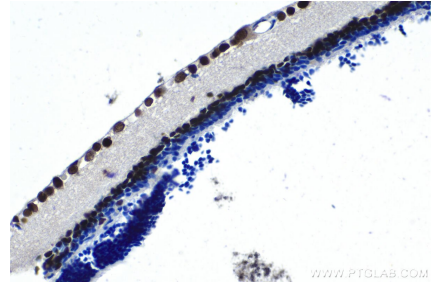
Selected Validation Data



Immunohistochemical analysis of paraffin-embedded human pancreas cancer tissue slide using KHC1565 (PAX6 IHC Kit).



Immunohistochemical analysis of paraffin-embedded mouse eye tissue slide using KHC1565 (PAX6 IHC Kit).



Immunohistochemical analysis of paraffin-embedded rat eye tissue slide using KHC1565 (PAX6 IHC Kit).