

IHC*easy* PSMB4 Ready-To-Use IHC Kit

Catalog Number: **KHC1572**

General Information

Sample type:
FFPE tissue

Cited sample type:

Reactivity:
Human, Mouse, Rat

Cited Reactivity:

Assay type:
Immunohistochemistry

Primary antibody type:
Rabbit Polyclonal

Secondary antibody type:
Polymer-HRP-Goat anti-Rabbit

Kit Component

Component	Size	Concentration
Antigen Retrieval Buffer	100 mL	50×
Washing Buffer	100 mL ×2	20×
Blocking Buffer	5 mL	RTU
Primary Antibody	5 mL	RTU
Secondary Antibody	5 mL	RTU
Chromogen Component A	0.2 mL	RTU
Chromogen Component B	4 mL	RTU
Signal Enhancer	5 mL	RTU
Counter Staining Reagent	5 mL	RTU
Mounting Media	5 mL	RTU
Control Slide	1 slide (Optional)	FFPE
Datasheet	1 Copy	
Manual	1 Copy	

Storage Instructions

All the reagents are stored at 2-8°C. The kit is stable for 6 months from the date of receipt.

Background

PSMB4 (Proteasome subunit beta type-4) is also named as PROS26 and belongs to the peptidase T1B family. The proteasome is a multicatalytic proteinase complex which is characterized by its ability to cleave peptides with Arg, Phe, Tyr, Leu, and Glu adjacent to the leaving group at neutral or slightly basic pH. The human protein PSMB4 is known mainly as an interaction partner for several proteins, suggesting an important function of binding not only to the lid, but also to the 20 S core of the proteasome. PSMB4 might be a major site for proteasome regulation, where signals from the outside might be transduced to the protease activities inside.

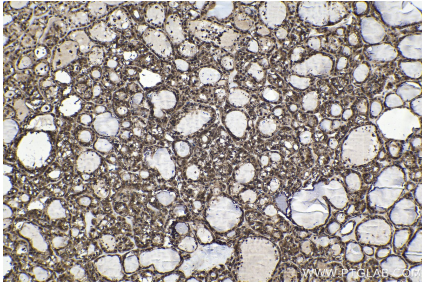
Synonyms

20S proteasome, 26 kDa prosomal protein, HN3, HsBPROS26, HsN3, Macropain beta chain, PROS 26, PROS26, Proteasome beta chain, Proteasome chain 3, Proteasome subunit beta type 4, PSMB4

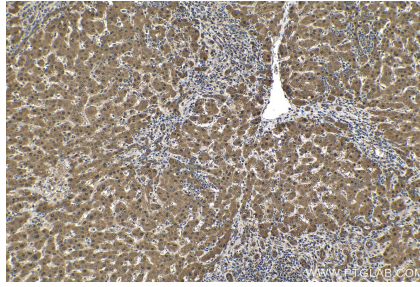
For technical support and original validation data for this product please contact:
T: 1 (888) 4PTGLAB (1-888-478-4522) (toll free in USA), or 1(312) 455-8498 (outside USA)
E: proteintech@ptglab.com
W: ptglab.com

This product is exclusively available under Proteintech Group brand and is not available to purchase from any other manufacturer.

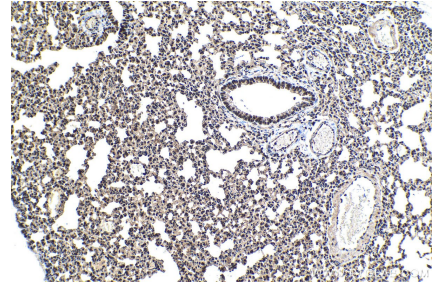
Selected Validation Data



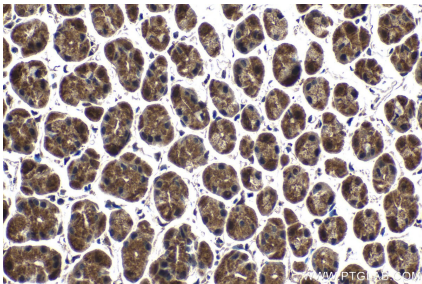
Immunohistochemical analysis of paraffin-embedded human thyroid cancer tissue slide using KHC1572 (PSMB4 IHC Kit).



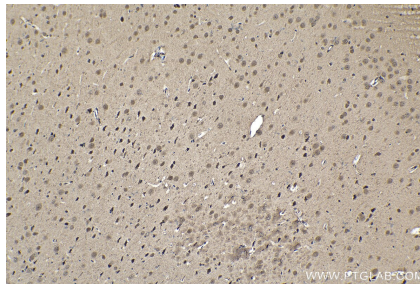
Immunohistochemical analysis of paraffin-embedded human liver cancer tissue slide using KHC1572 (PSMB4 IHC Kit).



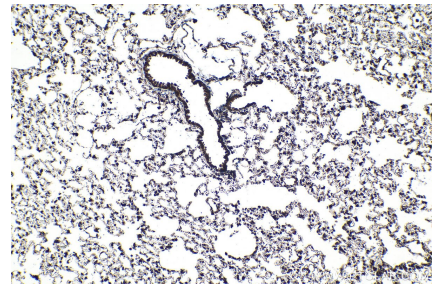
Immunohistochemical analysis of paraffin-embedded mouse lung tissue slide using KHC1572 (PSMB4 IHC Kit).



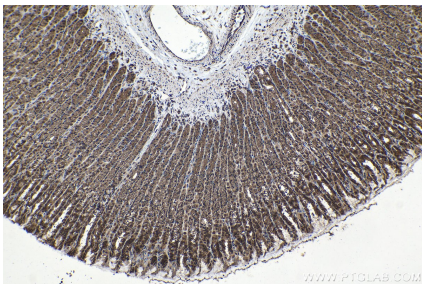
Immunohistochemical analysis of paraffin-embedded mouse stomach tissue slide using KHC1572 (PSMB4 IHC Kit).



Immunohistochemical analysis of paraffin-embedded rat brain tissue slide using KHC1572 (PSMB4 IHC Kit).



Immunohistochemical analysis of paraffin-embedded rat lung tissue slide using KHC1572 (PSMB4 IHC Kit).



Immunohistochemical analysis of paraffin-embedded rat stomach tissue slide using KHC1572 (PSMB4 IHC Kit).