

IHC*easy* SMARCA1/SNF2L Ready-To-Use IHC Kit

Catalog Number: **KHC1574**

General Information

Sample type:
FFPE tissue

Cited sample type:

Reactivity:
Human, Mouse, Rat

Cited Reactivity:

Assay type:
Immunohistochemistry

Primary antibody type:
Rabbit Polyclonal

Secondary antibody type:
Polymer-HRP-Goat anti-Rabbit

Kit Component

Component	Size	Concentration
Antigen Retrieval Buffer	100 mL	50×
Washing Buffer	100 mL × 2	20×
Blocking Buffer	5 mL	RTU
Primary Antibody	5 mL	RTU
Secondary Antibody	5 mL	RTU
Chromogen Component A	0.2 mL	RTU
Chromogen Component B	4 mL	RTU
Signal Enhancer	5 mL	RTU
Counter Staining Reagent	5 mL	RTU
Mounting Media	5 mL	RTU
Control Slide	1 slide (Optional)	FFPE
Datasheet	1 Copy	
Manual	1 Copy	

Storage Instructions

All the reagents are stored at 2-8°C. The kit is stable for 6 months from the date of receipt.

Background

SNF2L, also named as SMARCA1, NURF140 and ISWI, encodes the SWI/SNF family of proteins. The encoded protein is an ATPase which is expressed in diverse tissues and contributes to the chromatin remodeling complex that is involved in transcription. SNF2L was shown to promote neurite outgrowth as well as regulate the human engrailed homeotic genes, important regulators of brain development. The protein may also play a role in DNA damage, growth inhibition and apoptosis of cancer cells.

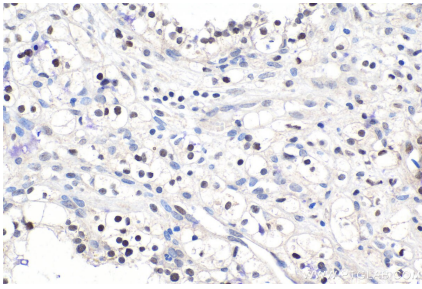
Synonyms

ATP dependent helicase SMARCA1, DKFZp686D1623, FLJ41547, ISWI, NURF140, SMARCA1, SNF2L, SNF2L1, SNF2LB, SWI, SWI2

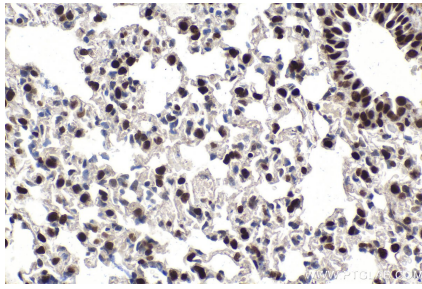
For technical support and original validation data for this product please contact:
T: 1 (888) 4PTGLAB (1-888-478-4522) (toll free in USA), or 1(312) 455-8498 (outside USA)
E: proteintech@ptglab.com
W: ptglab.com

This product is exclusively available under Proteintech Group brand and is not available to purchase from any other manufacturer.

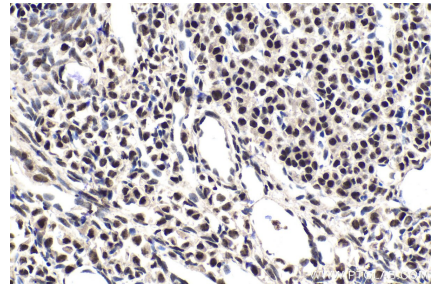
Selected Validation Data



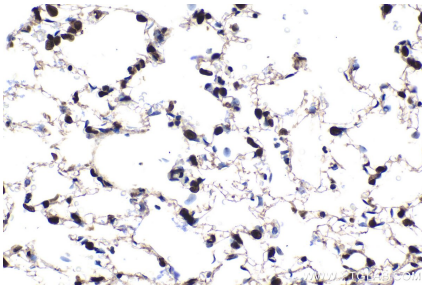
Immunohistochemical analysis of paraffin-embedded human renal cell carcinoma tissue slide using KHC1574 (SMARCA1/SNF2L IHC Kit).



Immunohistochemical analysis of paraffin-embedded mouse lung tissue slide using KHC1574 (SMARCA1/SNF2L IHC Kit).



Immunohistochemical analysis of paraffin-embedded mouse ovary tissue slide using KHC1574 (SMARCA1/SNF2L IHC Kit).



Immunohistochemical analysis of paraffin-embedded rat lung tissue slide using KHC1574 (SMARCA1/SNF2L IHC Kit).