

# IHC*easy* WAS Ready-To-Use IHC Kit

Catalog Number: **KHC1596**

## General Information

**Sample type:**  
FFPE tissue

**Cited sample type:**

**Reactivity:**  
Human, Mouse, Rat

**Cited Reactivity:**

**Assay type:**  
Immunohistochemistry

**Primary antibody type:**  
Rabbit Polyclonal

**Secondary antibody type:**  
Polymer-HRP-Goat anti-Rabbit

## Kit Component

Component	Size	Concentration
Antigen Retrieval Buffer	100 mL	50×
Washing Buffer	100 mL ×2	20×
Blocking Buffer	5 mL	RTU
Primary Antibody	5 mL	RTU
Secondary Antibody	5 mL	RTU
Chromogen Component A	0.2 mL	RTU
Chromogen Component B	4 mL	RTU
Signal Enhancer	5 mL	RTU
Counter Staining Reagent	5 mL	RTU
Mounting Media	5 mL	RTU
Control Slide	1 slide (Optional)	FFPE
Datasheet	1 Copy	
Manual	1 Copy	

## Storage Instructions

All the reagents are stored at 2-8°C. The kit is stable for 6 months from the date of receipt.

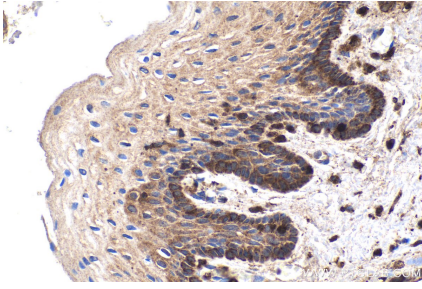
## Background

Wiskott-Aldrich Syndrome protein (WASP) regulates actin cytoskeleton in hematopoietic cells and defects in WASP cause Wiskott-Aldrich Syndrome (WAS), an X-linked immunodeficiency and autoimmunity disorder of childhood.

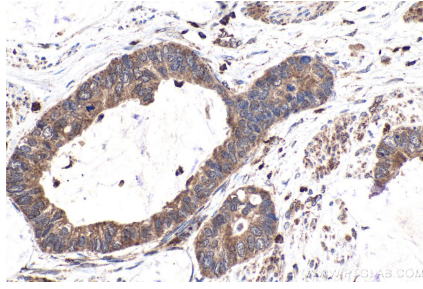
## Synonyms

IMD2, THC, THC1, WAS, WASP

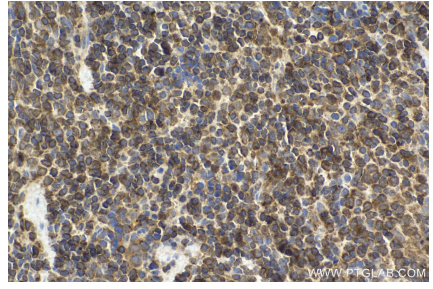
## Selected Validation Data



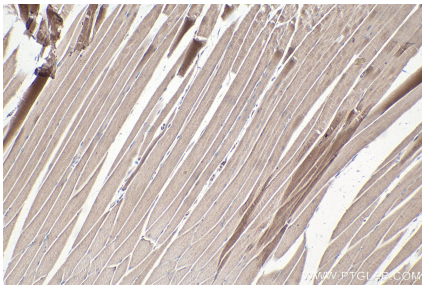
Immunohistochemical analysis of paraffin-embedded human cervical cancer tissue slide using KHC1596 (WAS IHC Kit).



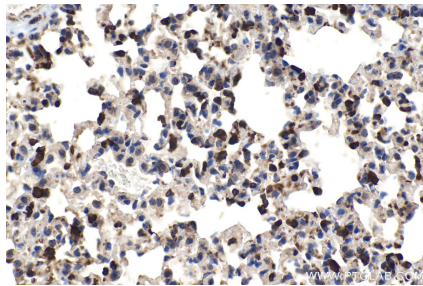
Immunohistochemical analysis of paraffin-embedded human urothelial carcinoma tissue slide using KHC1596 (WAS IHC Kit).



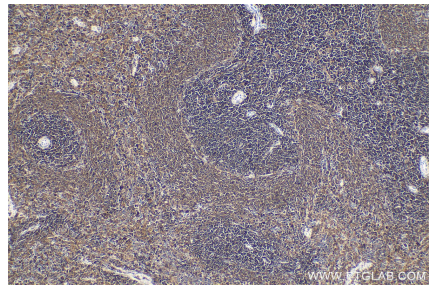
Immunohistochemical analysis of paraffin-embedded mouse spleen tissue slide using KHC1596 (WAS IHC Kit).



Immunohistochemical analysis of paraffin-embedded mouse skeletal muscle tissue slide using KHC1596 (WAS IHC Kit).



Immunohistochemical analysis of paraffin-embedded mouse lung tissue slide using KHC1596 (WAS IHC Kit).



Immunohistochemical analysis of paraffin-embedded rat spleen tissue slide using KHC1596 (WAS IHC Kit).