

# IHC*easy* SREBF2 Ready-To-Use IHC Kit

Catalog Number: **KHC1689**

## General Information

**Sample type:**  
FFPE tissue

**Cited sample type:**

**Reactivity:**  
Human, Mouse, Rat

**Cited Reactivity:**

**Assay type:**  
Immunohistochemistry

**Primary antibody type:**  
Rabbit Polyclonal

**Secondary antibody type:**  
Polymer-HRP-Goat anti-Rabbit

## Kit Component

Component	Size	Concentration
Antigen Retrieval Buffer	100 mL	50×
Washing Buffer	100 mL ×2	20×
Blocking Buffer	5 mL	RTU
Primary Antibody	5 mL	RTU
Secondary Antibody	5 mL	RTU
Chromogen Component A	0.2 mL	RTU
Chromogen Component B	4 mL	RTU
Signal Enhancer	5 mL	RTU
Counter Staining Reagent	5 mL	RTU
Mounting Media	5 mL	RTU
Control Slide	1 slide (Optional)	FFPE
Datasheet	1 Copy	
Manual	1 Copy	

## Storage Instructions

All the reagents are stored at 2-8°C. The kit is stable for 6 months from the date of receipt.

## Background

SREBF2, also named as BHLHD2, is a 1141 amino acid protein, which contains 1 bHLH domain and belongs to the SREBP family. SREBF2 localizes in the endoplasmic reticulum membrane and is ubiquitously expressed in adult and fetal tissues. SREBF2 as a transcriptional activator is required for lipid homeostasis. SREBF2 expression is dynamically regulated in response to nutritional and hormonal cues.

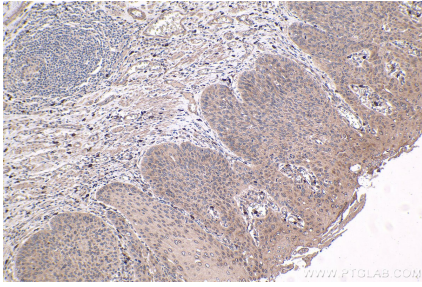
## Synonyms

bHLHD2, SREBF2, SREBP 2, SREBP2

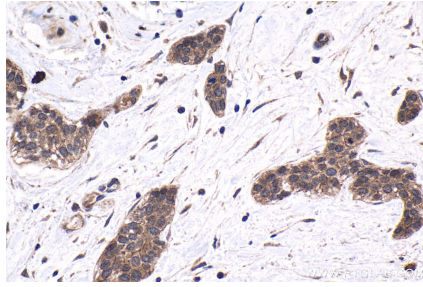
For technical support and original validation data for this product please contact:  
T: 1 (888) 4PTGLAB (1-888-478-4522) (toll free in USA), or 1(312) 455-8498 (outside USA)  
E: [proteintech@ptglab.com](mailto:proteintech@ptglab.com)  
W: [ptglab.com](http://ptglab.com)

This product is exclusively available under Proteintech Group brand and is not available to purchase from any other manufacturer.

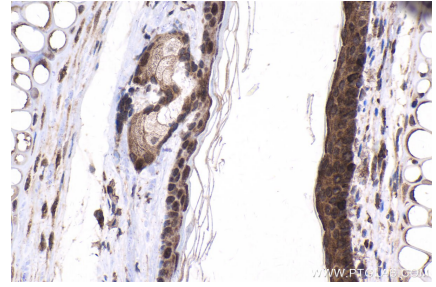
## Selected Validation Data



Immunohistochemical analysis of paraffin-embedded human oesophagus cancer tissue slide using KHC1689 (SREBF2 IHC Kit).



Immunohistochemical analysis of paraffin-embedded human urothelial carcinoma tissue slide using KHC1689 (SREBF2 IHC Kit).



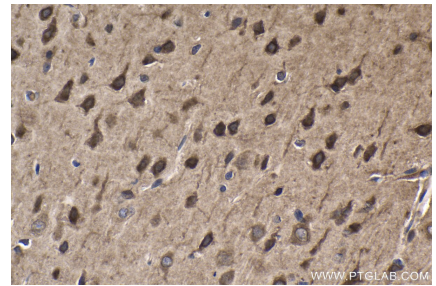
Immunohistochemical analysis of paraffin-embedded mouse skin tissue slide using KHC1689 (SREBF2 IHC Kit).



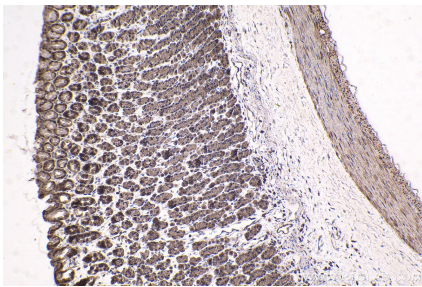
Immunohistochemical analysis of paraffin-embedded mouse stomach tissue slide using KHC1689 (SREBF2 IHC Kit).



Immunohistochemical analysis of paraffin-embedded rat skin tissue slide using KHC1689 (SREBF2 IHC Kit).



Immunohistochemical analysis of paraffin-embedded rat brain tissue slide using KHC1689 (SREBF2 IHC Kit).



Immunohistochemical analysis of paraffin-embedded rat stomach tissue slide using KHC1689 (SREBF2 IHC Kit).