

IHC*easy* ILF3 Ready-To-Use IHC Kit

Catalog Number: **KHC1695**

General Information

Sample type:
FFPE tissue

Cited sample type:

Reactivity:
Human, Mouse, Rat

Cited Reactivity:

Assay type:
Immunohistochemistry

Primary antibody type:
Mouse Monoclonal

Secondary antibody type:
Polymer-HRP-Goat anti-Mouse

Kit Component

Component	Size	Concentration
Antigen Retrieval Buffer	100 mL	50×
Washing Buffer	100 mL × 2	20×
Blocking Buffer	5 mL	RTU
Primary Antibody	5 mL	RTU
Secondary Antibody	5 mL	RTU
Chromogen Component A	0.2 mL	RTU
Chromogen Component B	4 mL	RTU
Signal Enhancer	5 mL	RTU
Counter Staining Reagent	5 mL	RTU
Mounting Media	5 mL	RTU
Control Slide	1 slide (Optional)	FFPE
Datasheet	1 Copy	
Manual	1 Copy	

Storage Instructions

All the reagents are stored at 2-8°C. The kit is stable for 6 months from the date of receipt.

Background

Nuclear factor of activated T cells (NFAT) is a transcription factor required for T-cell expression of interleukin-2 (IL2). NFAT binds to a sequence known as the antigen receptor response element-2 (ARRE2) in the IL2 enhancer. NFAT contains two subunits, one is ILF3. ILF3 can facilitate double-stranded RNA-regulated gene expression at the level of post-transcription. It binds to and inhibits coding sequences of acid beta-glucosidase and other mRNAs and functions at the initiation phase of GCaSe mRNA translation, probably by inhibiting its binding to polysomes. ILF3 exists in two isoforms NFAR-1 (90 kDa) and -2 (110 kDa). NFAR-1 and -2 each contain two DRBDs in their C-terminus regions and exhibit 98% homology to one another at the amino acid level. NFAR-2 contains an extra 192 amino acids at the C-terminal region that are encoded by an extra three exons present in its corresponding transcript.

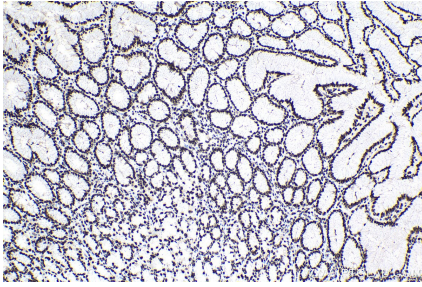
Synonyms

CBTF, DRBF, DRBP76, ILF3, M phase phosphoprotein 4, MMP4, MPHOSPH4, MPP4, NF AT 90, NF110, NF90, NFAR, NFAR 1, NFAR2, TCP110, TCP80

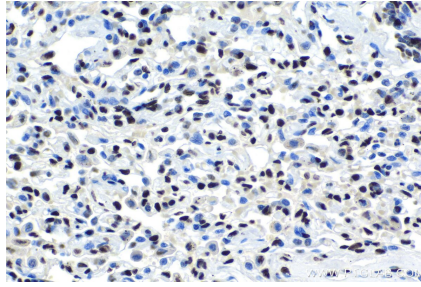
For technical support and original validation data for this product please contact:
T: 1 (888) 4PTGLAB (1-888-478-4522) (toll free in USA), or 1(312) 455-8498 (outside USA)
E: proteintech@ptglab.com
W: ptglab.com

This product is exclusively available under Proteintech Group brand and is not available to purchase from any other manufacturer.

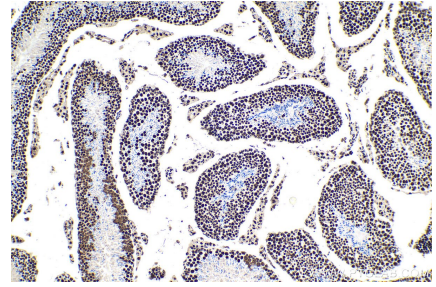
Selected Validation Data



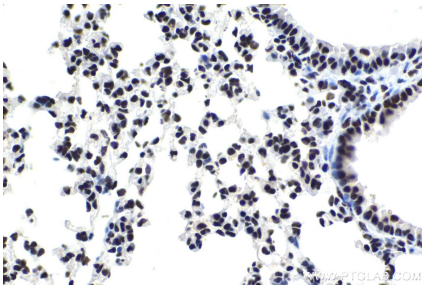
Immunohistochemical analysis of paraffin-embedded human stomach cancer tissue slide using KHC1695 (ILF3 IHC Kit).



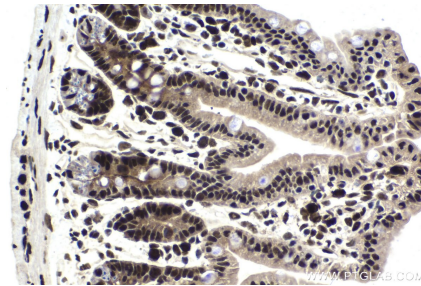
Immunohistochemical analysis of paraffin-embedded human lung cancer tissue slide using KHC1695 (ILF3 IHC Kit).



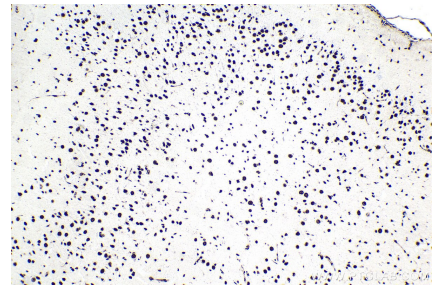
Immunohistochemical analysis of paraffin-embedded mouse testis tissue slide using KHC1695 (ILF3 IHC Kit).



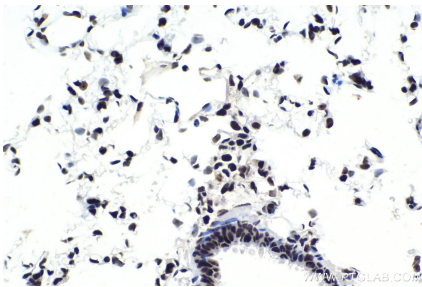
Immunohistochemical analysis of paraffin-embedded mouse lung tissue slide using KHC1695 (ILF3 IHC Kit).



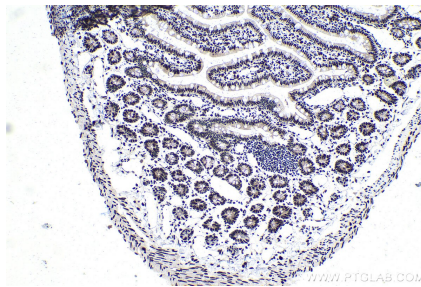
Immunohistochemical analysis of paraffin-embedded mouse small intestine tissue slide using KHC1695 (ILF3 IHC Kit).



Immunohistochemical analysis of paraffin-embedded rat brain tissue slide using KHC1695 (ILF3 IHC Kit).



Immunohistochemical analysis of paraffin-embedded rat lung tissue slide using KHC1695 (ILF3 IHC Kit).



Immunohistochemical analysis of paraffin-embedded rat small intestine tissue slide using KHC1695 (ILF3 IHC Kit).