

IHC*easy* CHAF1B Ready-To-Use IHC Kit

Catalog Number: **KHC1700**

General Information

Sample type:
FFPE tissue

Cited sample type:

Reactivity:
Human

Cited Reactivity:

Assay type:
Immunohistochemistry

Primary antibody type:
Rabbit Polyclonal

Secondary antibody type:
Polymer-HRP-Goat anti-Rabbit

Kit Component

Component	Size	Concentration
Antigen Retrieval Buffer	100 mL	50×
Washing Buffer	100 mL ×2	20×
Blocking Buffer	5 mL	RTU
Primary Antibody	5 mL	RTU
Secondary Antibody	5 mL	RTU
Chromogen Component A	0.2 mL	RTU
Chromogen Component B	4 mL	RTU
Signal Enhancer	5 mL	RTU
Counter Staining Reagent	5 mL	RTU
Mounting Media	5 mL	RTU
Control Slide	1 slide (Optional)	FFPE
Datasheet	1 Copy	
Manual	1 Copy	

Storage Instructions

All the reagents are stored at 2-8°C. The kit is stable for 6 months from the date of receipt.

Background

CHAF1B, also named as CAF1A, CAF1P60, MPHOSPH7, MPP7, is a 559 amino acid protein, which belongs to the WD repeat HIR1 family. CHAF1B as a subunit of the CAF-1 complex that contains RBBP4, CHAF1B and CHAF1A. CHAF1B is thought to mediate chromatin assembly in DNA replication and DNA repair and assembles histone octamers onto replicating DNA in vitro.

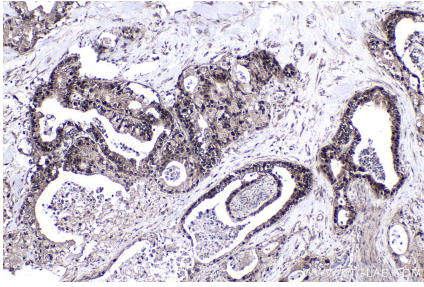
Synonyms

CAF 1, CAF 1 subunit B, CAF I 60 kDa subunit, CAF I p60, CAF IP60, CAF1, CAF1A, CAF1P60, CHAF1B, M phase phosphoprotein 7, MPHOSPH7, MPP7

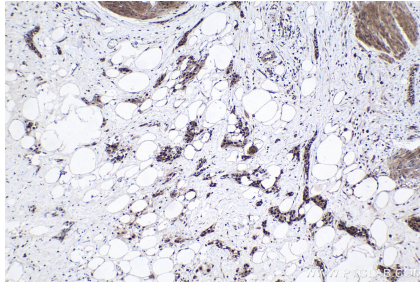
For technical support and original validation data for this product please contact:
T: 1 (888) 4PTGLAB (1-888-478-4522) (toll free in USA), or 1(312) 455-8498 (outside USA)
E: proteintech@ptglab.com
W: ptglab.com

This product is exclusively available under Proteintech Group brand and is not available to purchase from any other manufacturer.

Selected Validation Data



Immunohistochemical analysis of paraffin-embedded human pancreas cancer tissue slide using KHC1700 (CHAF1B IHC Kit).



Immunohistochemical analysis of paraffin-embedded human urothelial carcinoma tissue slide using KHC1700 (CHAF1B IHC Kit).