

# IHC*easy* NFATC2 Ready-To-Use IHC Kit

Catalog Number: **KHC1712**

## General Information

**Sample type:**  
FFPE tissue

**Cited sample type:**

**Reactivity:**  
Human, Mouse, Rat

**Cited Reactivity:**

**Assay type:**  
Immunohistochemistry

**Primary antibody type:**  
Rabbit Polyclonal

**Secondary antibody type:**  
Polymer-HRP-Goat anti-Rabbit

## Kit Component

Component	Size	Concentration
Antigen Retrieval Buffer	100 mL	50×
Washing Buffer	100 mL ×2	20×
Blocking Buffer	5 mL	RTU
Primary Antibody	5 mL	RTU
Secondary Antibody	5 mL	RTU
Chromogen Component A	0.2 mL	RTU
Chromogen Component B	4 mL	RTU
Signal Enhancer	5 mL	RTU
Counter Staining Reagent	5 mL	RTU
Mounting Media	5 mL	RTU
Control Slide	1 slide (Optional)	FFPE
Datasheet	1 Copy	
Manual	1 Copy	

## Storage Instructions

All the reagents are stored at 2-8°C. The kit is stable for 6 months from the date of receipt.

## Background

Nuclear factor of activated T-cells, cytoplasmic 2 (NFATC2), also named NFAT1, or NFATP, is a 925 amino acid protein, which is expressed in thymus, spleen, heart, testis, brain, placenta, muscle and pancreas. Cytoplasmic for the phosphorylated form and nuclear after activation that is controlled by calcineurin-mediated dephosphorylation. Rapid nuclear exit of NFATC is thought to be one mechanism by which cells distinguish between sustained and transient calcium signals. The subcellular localization of NFATC plays a key role in the regulation of gene transcription. NFATC2 plays a role in the inducible expression of cytokine genes in T-cells, especially in the induction of the IL-2, IL-3, IL-4, TNF-alpha or GM-CSF. NFATC2 promotes invasive migration through the activation of GPC6 expression and WNT5A signaling pathway.

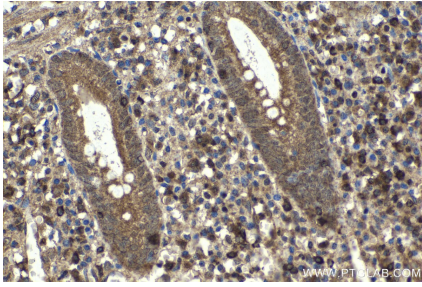
## Synonyms

NF ATc2, NF ATp, NFAT pre existing subunit, NFAT1, NFATC2, NFATP

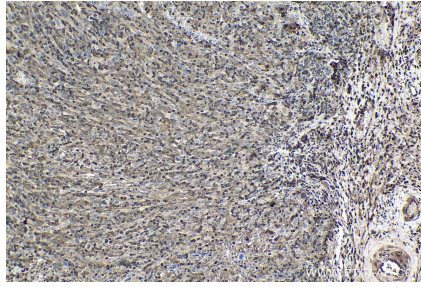
For technical support and original validation data for this product please contact:  
T: 1 (888) 4PTGLAB (1-888-478-4522) (toll free in USA), or 1(312) 455-8498 (outside USA)  
E: [proteintech@ptglab.com](mailto:proteintech@ptglab.com)  
W: [ptglab.com](http://ptglab.com)

This product is exclusively available under Proteintech Group brand and is not available to purchase from any other manufacturer.

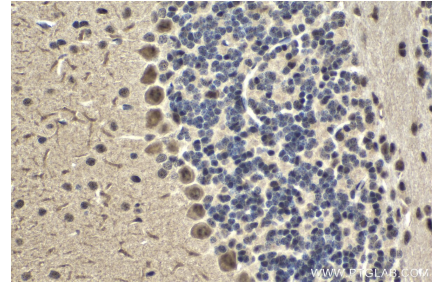
## Selected Validation Data



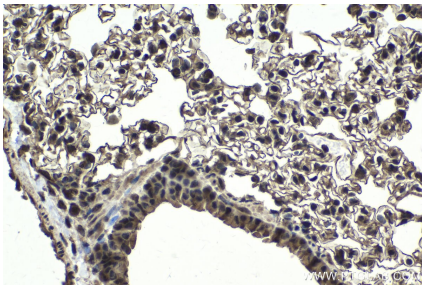
Immunohistochemical analysis of paraffin-embedded human appendicitis tissue slide using KHC1712 (NFATC2 IHC Kit).



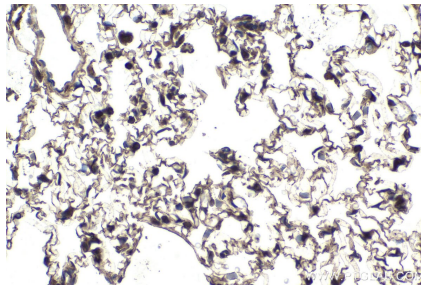
Immunohistochemical analysis of paraffin-embedded human skin cancer tissue slide using KHC1712 (NFATC2 IHC Kit).



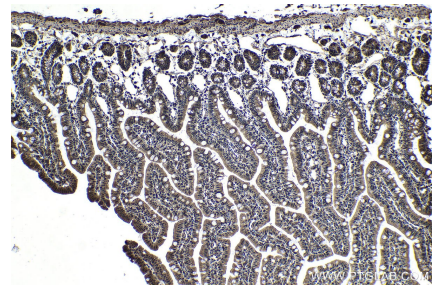
Immunohistochemical analysis of paraffin-embedded mouse cerebellum tissue slide using KHC1712 (NFATC2 IHC Kit).



Immunohistochemical analysis of paraffin-embedded mouse lung tissue slide using KHC1712 (NFATC2 IHC Kit).



Immunohistochemical analysis of paraffin-embedded rat lung tissue slide using KHC1712 (NFATC2 IHC Kit).



Immunohistochemical analysis of paraffin-embedded rat small intestine tissue slide using KHC1712 (NFATC2 IHC Kit).