

# IHC*easy* ASAH1 Ready-To-Use IHC Kit

Catalog Number: **KHC1714**

## General Information

**Sample type:**  
FFPE tissue

**Cited sample type:**

**Reactivity:**  
Human, Mouse, Rat

**Cited Reactivity:**

**Assay type:**  
Immunohistochemistry

**Primary antibody type:**  
Mouse Monoclonal

**Secondary antibody type:**  
Polymer-HRP-Goat anti-Mouse

## Kit Component

Component	Size	Concentration
Antigen Retrieval Buffer	100 mL	50×
Washing Buffer	100 mL ×2	20×
Blocking Buffer	5 mL	RTU
Primary Antibody	5 mL	RTU
Secondary Antibody	5 mL	RTU
Chromogen Component A	0.2 mL	RTU
Chromogen Component B	4 mL	RTU
Signal Enhancer	5 mL	RTU
Counter Staining Reagent	5 mL	RTU
Mounting Media	5 mL	RTU
Control Slide	1 slide (Optional)	FFPE
Datasheet	1 Copy	
Manual	1 Copy	

## Storage Instructions

All the reagents are stored at 2-8°C. The kit is stable for 6 months from the date of receipt.

## Background

ASAH1, also named as AC, ACDase, Acid CDase, PHP32 and ASAH, belongs to the acid ceramidase family. ASAH1 is a lipid hydrolase that catalyzes the conversion of ceramide (cer) into sphingosine (SPH) and a free fatty acid. Mutation of ASAH1 will cause the Farber lipogranulomatosis (FL) which also known as Farber disease (FD). ASAH1 is highly expressed in Heart.

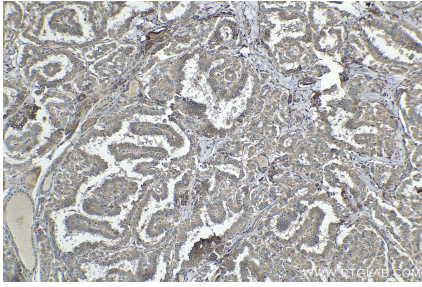
## Synonyms

AC, Acid ceramidase, Acylsphingosine deacylase, ASAH, ASAH1, FLJ21558, FLJ22079, HSD 33, PHP, PHP32, Putative 32 kDa heart protein

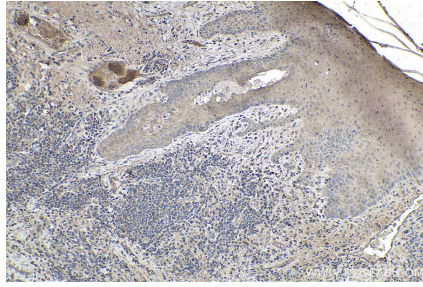
For technical support and original validation data for this product please contact:  
T: 1 (888) 4PTGLAB (1-888-478-4522) (toll free in USA), or 1(312) 455-8498 (outside USA)  
E: [proteintech@ptglab.com](mailto:proteintech@ptglab.com)  
W: [ptglab.com](http://ptglab.com)

This product is exclusively available under Proteintech Group brand and is not available to purchase from any other manufacturer.

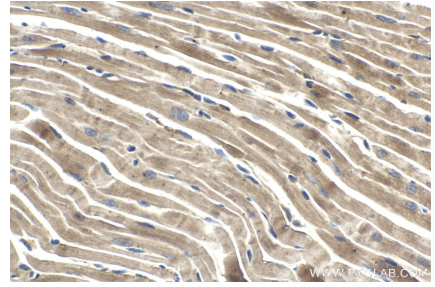
## Selected Validation Data



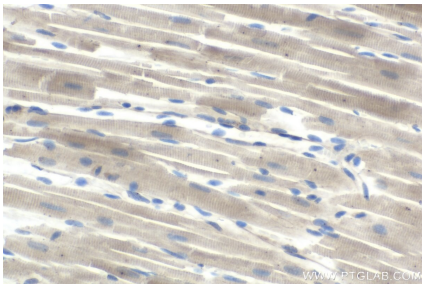
Immunohistochemical analysis of paraffin-embedded human thyroid cancer tissue slide using KHC1714 (ASAHI IHC Kit).



Immunohistochemical analysis of paraffin-embedded human skin cancer tissue slide using KHC1714 (ASAHI IHC Kit).



Immunohistochemical analysis of paraffin-embedded mouse heart tissue slide using KHC1714 (ASAHI IHC Kit).



Immunohistochemical analysis of paraffin-embedded rat heart tissue slide using KHC1714 (ASAHI IHC Kit).