

IHC*easy* NCOA6 Ready-To-Use IHC Kit

Catalog Number: **KHC1735**

General Information

Sample type:
FFPE tissue
Cited sample type:
Reactivity:
Human, Mouse
Cited Reactivity:

Assay type:
Immunohistochemistry
Primary antibody type:
Rabbit Polyclonal
Secondary antibody type:
Polymer-HRP-Goat anti-Rabbit

Kit Component

Component	Size	Concentration
Antigen Retrieval Buffer	100 mL	50×
Washing Buffer	100 mL ×2	20×
Blocking Buffer	5 mL	RTU
Primary Antibody	5 mL	RTU
Secondary Antibody	5 mL	RTU
Chromogen Component A	0.2 mL	RTU
Chromogen Component B	4 mL	RTU
Signal Enhancer	5 mL	RTU
Counter Staining Reagent	5 mL	RTU
Mounting Media	5 mL	RTU
Control Slide	1 slide (Optional)	FFPE
Datasheet	1 Copy	
Manual	1 Copy	

Storage Instructions

All the reagents are stored at 2-8°C. The kit is stable for 6 months from the date of receipt.

Background

NCOA6 (Nuclear receptor coactivator 6), also named as AIB3 or ANTP, is a 2063 amino acid protein, which contains two LXXLL motifs. NCOA6 localizes in the nucleus and is highly expressed in brain, prostate, testis and ovary. NCOA6 directly binds nuclear receptors and stimulates the transcriptional activities in a hormone-dependent fashion.

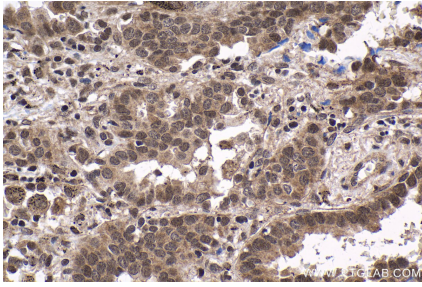
Synonyms

AIB3, ANTP, ASC 2, ASC2, HOX1.1, HOXA7, KIAA0181, NCOA6, NRC, NRC RAP250, nuclear receptor coactivator 6, PPAR interacting protein, PRIP, RAP250, TRBP

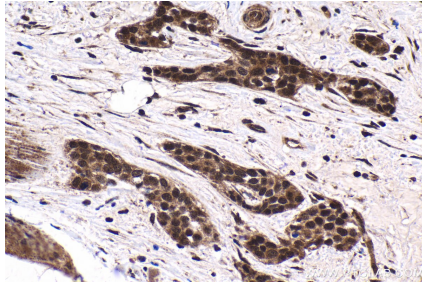
For technical support and original validation data for this product please contact:
T: 1 (888) 4PTGLAB (1-888-478-4522) (toll free in USA), or 1(312) 455-8498 (outside USA)
E: proteintech@ptglab.com
W: ptglab.com

This product is exclusively available under Proteintech Group brand and is not available to purchase from any other manufacturer.

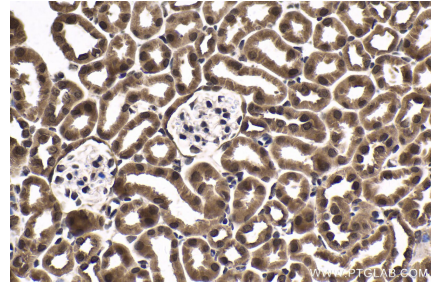
Selected Validation Data



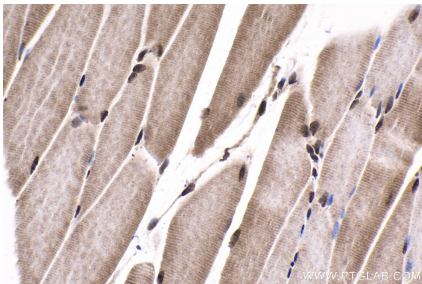
Immunohistochemical analysis of paraffin-embedded human lung cancer tissue slide using KHC1735 (NCOA6 IHC Kit).



Immunohistochemical analysis of paraffin-embedded human urothelial carcinoma tissue slide using KHC1735 (NCOA6 IHC Kit).



Immunohistochemical analysis of paraffin-embedded mouse kidney tissue slide using KHC1735 (NCOA6 IHC Kit).



Immunohistochemical analysis of paraffin-embedded mouse skeletal muscle tissue slide using KHC1735 (NCOA6 IHC Kit).