

IHC*easy* NOLC1 Ready-To-Use IHC Kit

Catalog Number: **KHC1743**

General Information

Sample type:
FFPE tissue

Cited sample type:

Reactivity:
Human, Mouse, Rat

Cited Reactivity:

Assay type:
Immunohistochemistry

Primary antibody type:
Rabbit Polyclonal

Secondary antibody type:
Polymer-HRP-Goat anti-Rabbit

Kit Component

Component	Size	Concentration
Antigen Retrieval Buffer	100 mL	50×
Washing Buffer	100 mL ×2	20×
Blocking Buffer	5 mL	RTU
Primary Antibody	5 mL	RTU
Secondary Antibody	5 mL	RTU
Chromogen Component A	0.2 mL	RTU
Chromogen Component B	4 mL	RTU
Signal Enhancer	5 mL	RTU
Counter Staining Reagent	5 mL	RTU
Mounting Media	5 mL	RTU
Control Slide	1 slide (Optional)	FFPE
Datasheet	1 Copy	
Manual	1 Copy	

Storage Instructions

All the reagents are stored at 2-8°C. The kit is stable for 6 months from the date of receipt.

Background

Nucleolar and coiled-body phosphoprotein 1 (NOLC1) is a phosphoprotein that transiently associates with the mature nucleolar H/ACA and C/D box small nucleolar ribonucleoproteins (snoRNPs), guiding site-specific 2'-O-methylation and pseudouridylation of pre-rRNAs. It contains a nuclear localization signal binding sequence and is thought to shuttle between the nucleolus and the cytoplasm. NOLC1 plays an essential role in the synthesis of rRNA and the biosynthesis of ribosomes.

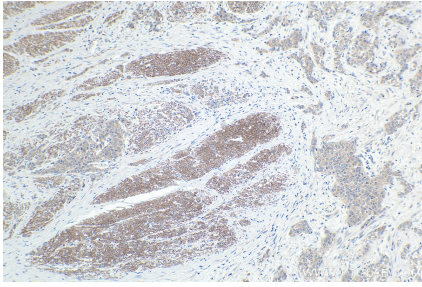
Synonyms

KIAA0035, NOLC1, NOPP130, NOPP140, NS5ATP13, Nucleolar 130 kDa protein, Nucleolar phosphoprotein p130

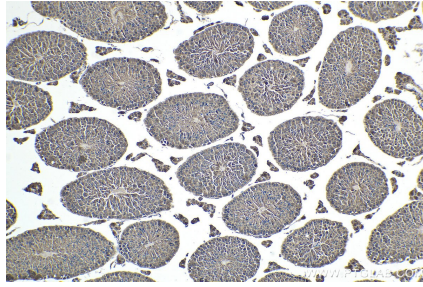
For technical support and original validation data for this product please contact:
T: 1 (888) 4PTGLAB (1-888-478-4522) (toll free in USA), or 1(312) 455-8498 (outside USA) E: proteintech@ptglab.com W: ptglab.com

This product is exclusively available under Proteintech Group brand and is not available to purchase from any other manufacturer.

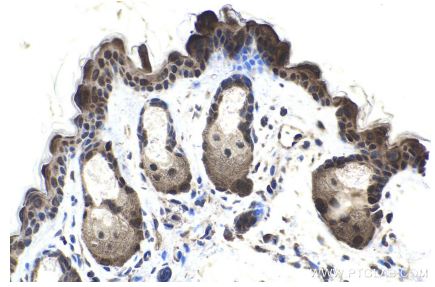
Selected Validation Data



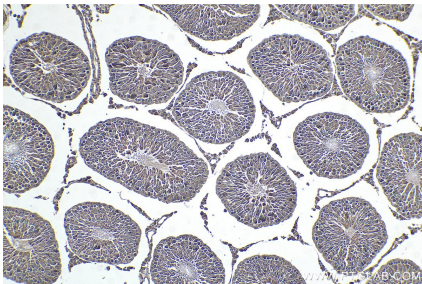
Immunohistochemical analysis of paraffin-embedded human urothelial carcinoma tissue slide using KHC1743 (NOLC1 IHC Kit).



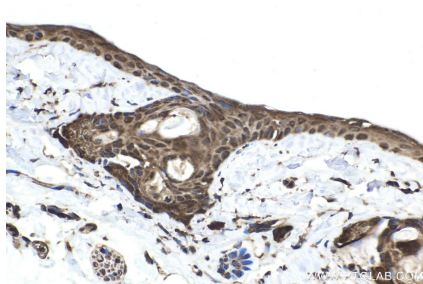
Immunohistochemical analysis of paraffin-embedded mouse testis tissue slide using KHC1743 (NOLC1 IHC Kit).



Immunohistochemical analysis of paraffin-embedded mouse skin tissue slide using KHC1743 (NOLC1 IHC Kit).



Immunohistochemical analysis of paraffin-embedded rat testis tissue slide using KHC1743 (NOLC1 IHC Kit).



Immunohistochemical analysis of paraffin-embedded rat skin tissue slide using KHC1743 (NOLC1 IHC Kit).