

IHC*easy* SF3B3 Ready-To-Use IHC Kit

Catalog Number: **KHC1751**

General Information

Sample type:
FFPE tissue

Cited sample type:

Reactivity:
Human, Mouse, Rat

Cited Reactivity:

Assay type:
Immunohistochemistry

Primary antibody type:
Mouse Monoclonal

Secondary antibody type:
Polymer-HRP-Goat anti-Mouse

Kit Component

Component	Size	Concentration
Antigen Retrieval Buffer	100 mL	50×
Washing Buffer	100 mL ×2	20×
Blocking Buffer	5 mL	RTU
Primary Antibody	5 mL	RTU
Secondary Antibody	5 mL	RTU
Chromogen Component A	0.2 mL	RTU
Chromogen Component B	4 mL	RTU
Signal Enhancer	5 mL	RTU
Counter Staining Reagent	5 mL	RTU
Mounting Media	5 mL	RTU
Control Slide	1 slide (Optional)	FFPE
Datasheet	1 Copy	
Manual	1 Copy	

Storage Instructions

All the reagents are stored at 2-8°C. The kit is stable for 6 months from the date of receipt.

Background

Introns are removed from nuclear pre-mRNA in 2-step transesterification reactions. Splicing occurred in a large ribonucleoprotein particle, called the spliceosome. Spliceosomal intermediate complexes form on pre-mRNA in the order E, A, B, and C, with the catalytic reactions occurring in complex C. U2 small nuclear ribonucleoproteins are one of the proteins essential for spliceosome assembly and mRNA splicing. Functional U2 snRNP is composed of a 12S unit and 2 splicing factors, SF3A, which is composed of 3 proteins, and SF3B, which composed of 4 proteins. SF3B3 is one of SF3B, and it's required for 'A' complex assembly formed by the stable binding of U2 snRNP to the branchpoint sequence(BPS) in pre-mRNA.

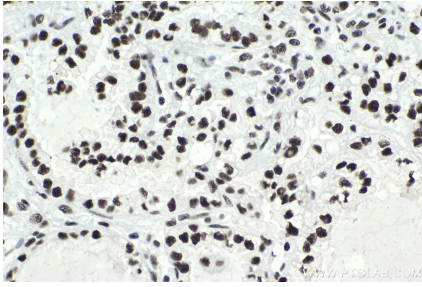
Synonyms

KIAA0017, RSE1, SAP 130, SAP130, SF3b130, SF3B3, Splicing factor 3B subunit 3, STAF130

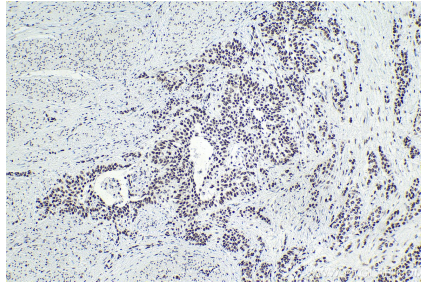
For technical support and original validation data for this product please contact:
T: 1 (888) 4PTGLAB (1-888-478-4522) (toll free in USA), or 1(312) 455-8498 (outside USA) E: proteintech@ptglab.com W: ptglab.com

This product is exclusively available under Proteintech Group brand and is not available to purchase from any other manufacturer.

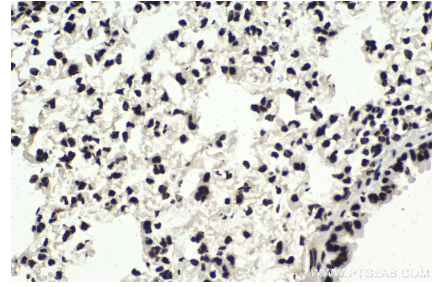
Selected Validation Data



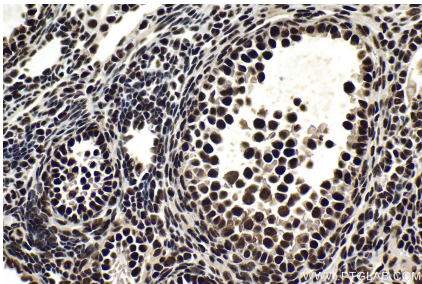
Immunohistochemical analysis of paraffin-embedded human lung cancer tissue slide using KHC1751 (SF3B3 IHC Kit).



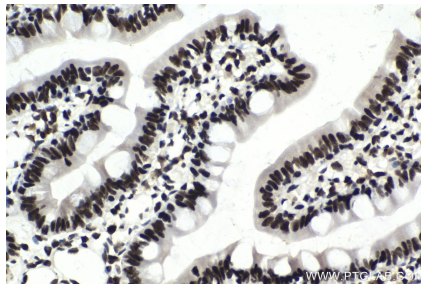
Immunohistochemical analysis of paraffin-embedded human urothelial carcinoma tissue slide using KHC1751 (SF3B3 IHC Kit).



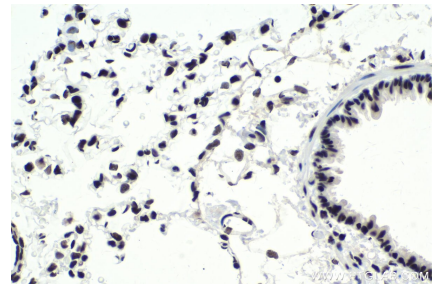
Immunohistochemical analysis of paraffin-embedded mouse lung tissue slide using KHC1751 (SF3B3 IHC Kit).



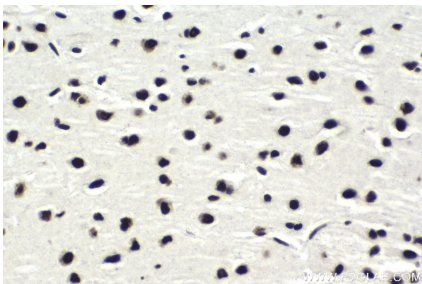
Immunohistochemical analysis of paraffin-embedded mouse ovary tissue slide using KHC1751 (SF3B3 IHC Kit).



Immunohistochemical analysis of paraffin-embedded rat small intestine tissue slide using KHC1751 (SF3B3 IHC Kit).



Immunohistochemical analysis of paraffin-embedded rat lung tissue slide using KHC1751 (SF3B3 IHC Kit).



Immunohistochemical analysis of paraffin-embedded rat brain tissue slide using KHC1751 (SF3B3 IHC Kit).