

IHC*easy* SKOR2 Ready-To-Use IHC Kit

Catalog Number: **KHC1768**

General Information

Sample type:
FFPE tissue

Cited sample type:

Reactivity:
Human, Mouse, Rat

Cited Reactivity:

Assay type:
Immunohistochemistry

Primary antibody type:
Rabbit Polyclonal

Secondary antibody type:
Polymer-HRP-Goat anti-Rabbit

Kit Component

Component	Size	Concentration
Antigen Retrieval Buffer	100 mL	50×
Washing Buffer	100 mL ×2	20×
Blocking Buffer	5 mL	RTU
Primary Antibody	5 mL	RTU
Secondary Antibody	5 mL	RTU
Chromogen Component A	0.2 mL	RTU
Chromogen Component B	4 mL	RTU
Signal Enhancer	5 mL	RTU
Counter Staining Reagent	5 mL	RTU
Mounting Media	5 mL	RTU
Control Slide	1 slide (Optional)	FFPE
Datasheet	1 Copy	
Manual	1 Copy	

Storage Instructions

All the reagents are stored at 2-8°C. The kit is stable for 6 months from the date of receipt.

Background

SKOR2 (SKI family transcriptional corepressor 2), also named FUSSEL18, is a transcriptional repressor that is highly expressed in the central nervous system. It is identified as a novel transcriptional regulator in Purkinje cells that acts upstream of Shh during cerebellum development. Skor2 was detected in purkinje cells in human fetal cerebellum.

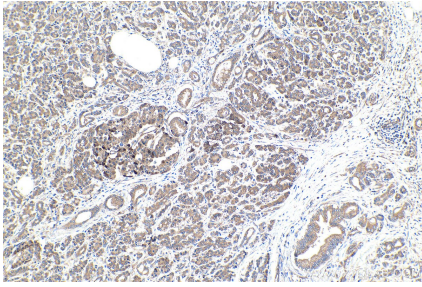
Synonyms

FUSSEL18, SKOR2

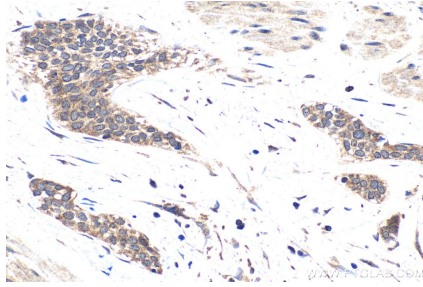
For technical support and original validation data for this product please contact:
T: 1 (888) 4PTGLAB (1-888-478-4522) (toll free in USA), or 1(312) 455-8498 (outside USA)
E: proteintech@ptglab.com
W: ptglab.com

This product is exclusively available under Proteintech Group brand and is not available to purchase from any other manufacturer.

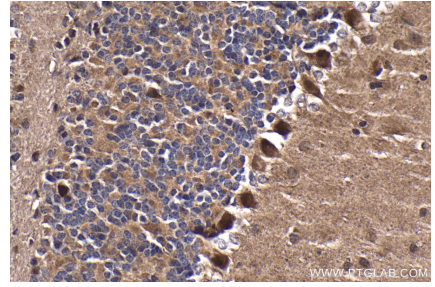
Selected Validation Data



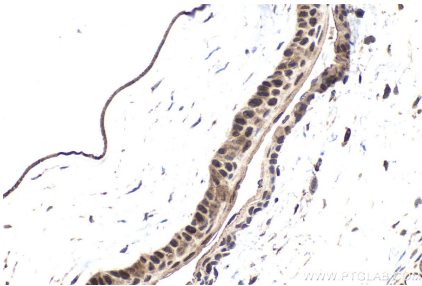
Immunohistochemical analysis of paraffin-embedded human pancreas cancer tissue slide using KHC1768 (SKOR2 IHC Kit).



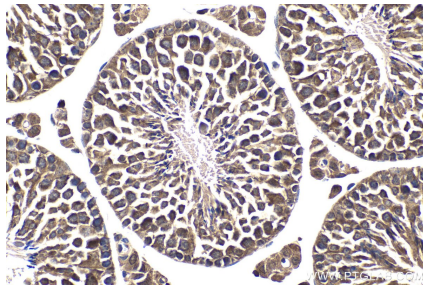
Immunohistochemical analysis of paraffin-embedded human urothelial carcinoma tissue slide using KHC1768 (SKOR2 IHC Kit).



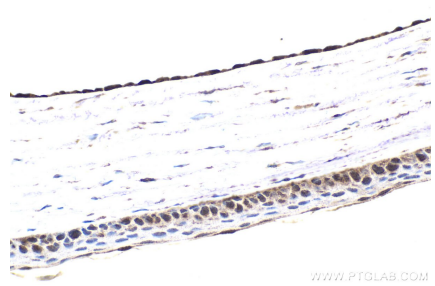
Immunohistochemical analysis of paraffin-embedded mouse cerebellum tissue slide using KHC1768 (SKOR2 IHC Kit).



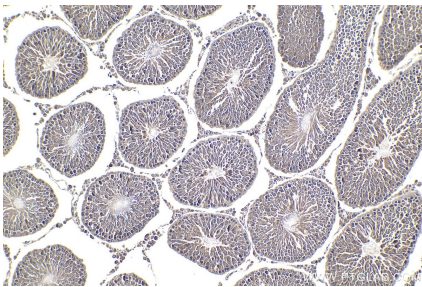
Immunohistochemical analysis of paraffin-embedded mouse eye tissue slide using KHC1768 (SKOR2 IHC Kit).



Immunohistochemical analysis of paraffin-embedded mouse testis tissue slide using KHC1768 (SKOR2 IHC Kit).



Immunohistochemical analysis of paraffin-embedded rat eye tissue slide using KHC1768 (SKOR2 IHC Kit).



Immunohistochemical analysis of paraffin-embedded rat testis tissue slide using KHC1768 (SKOR2 IHC Kit).