

IHC*easy* RIF1 Ready-To-Use IHC Kit

Catalog Number: **KHC1780**

General Information

Sample type:
FFPE tissue

Cited sample type:

Reactivity:
Human, Mouse, Rat

Cited Reactivity:

Assay type:
Immunohistochemistry

Primary antibody type:
Rabbit Polyclonal

Secondary antibody type:
Polymer-HRP-Goat anti-Rabbit

Kit Component

Component	Size	Concentration
Antigen Retrieval Buffer	100 mL	50×
Washing Buffer	100 mL ×2	20×
Blocking Buffer	5 mL	RTU
Primary Antibody	5 mL	RTU
Secondary Antibody	5 mL	RTU
Chromogen Component A	0.2 mL	RTU
Chromogen Component B	4 mL	RTU
Signal Enhancer	5 mL	RTU
Counter Staining Reagent	5 mL	RTU
Mounting Media	5 mL	RTU
Control Slide	1 slide (Optional)	FFPE
Datasheet	1 Copy	
Manual	1 Copy	

Storage Instructions

All the reagents are stored at 2-8°C. The kit is stable for 6 months from the date of receipt.

Background

RIF1 (Rap1-interacting factor 1) is a multifunctional chromosome stability protein implicated in controlling DNA replication and repair. Human RIF1 can interact with protein phosphatase 1 (PP1) and the interaction is crucial for controlling DNA replication by limiting phosphorylation of the MCM complex. RIF1 also acts with PP1 to protect nascent DNA from overdegradation at stalled replication forks. RIF1 promotes non-homologous end joining (NHEJ) in double strand break (DSB) repair. Research studies show that RIF1 is overexpressed in breast cancer tissues and is upregulated in NSCLC tissues.

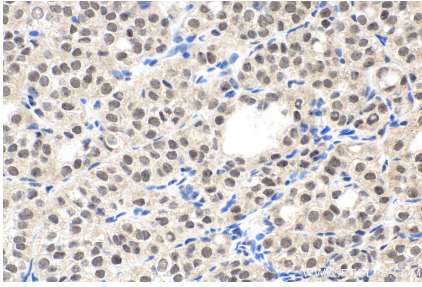
Synonyms

DKFZp434D1026, DKFZp781N1478, FLJ12870, RIF1

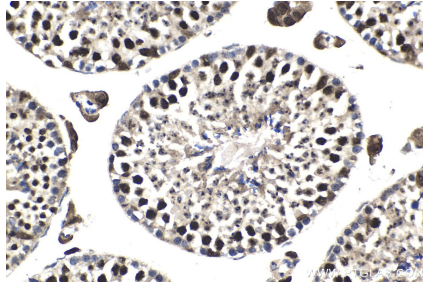
For technical support and original validation data for this product please contact:
T: 1 (888) 4PTGLAB (1-888-478-4522) (toll free in USA), or 1(312) 455-8498 (outside USA)
E: proteintech@ptglab.com
W: ptglab.com

This product is exclusively available under Proteintech Group brand and is not available to purchase from any other manufacturer.

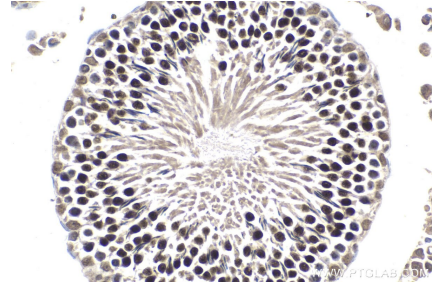
Selected Validation Data



Immunohistochemical analysis of paraffin-embedded human thyroid cancer tissue slide using KHC1780 (RIF1 IHC Kit).



Immunohistochemical analysis of paraffin-embedded mouse testis tissue slide using KHC1780 (RIF1 IHC Kit).



Immunohistochemical analysis of paraffin-embedded rat testis tissue slide using KHC1780 (RIF1 IHC Kit).